



Spare parts for the professional sector:  
**Food processing equipment**



Suitable for:

**ANGELO PO**



This catalogue is automatically generated.  
Therefore, the sequence of the items might  
not be always shown at best.  
Updates will be issued in case of additions  
and/or amendments.  
*Suitable **universal spare parts** may not be included*





Suitable for:

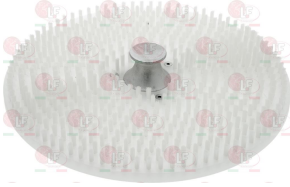
# ANGELO PO



Suitable for:

## Abrasive discs for potato peeler

**9720602 ABRASIVE DISC F/ MUSSEL CLEANER  $\varnothing$  388 mm**  
coupling hole  $\varnothing$  25 mm - with pin groove 8x50 mm  
for Potato peeler (ANGELO PO) P10 - P102 - P20  
P202 - P5



ANGELO PO PPC

ANGELO PO 3015460

**9720615 ABRASIVE DISC FOR POTATO PEELER  $\varnothing$  305 mm**  
conical coupling  $\varnothing$  35 mm  
for Potato peeler (ANGELO PO) MPK5



ANGELO PO 3030890

**9735009 ABRASIVE DISC FOR POTATO PEELER  $\varnothing$  380 mm**  
fitting  $\varnothing$  34 mm  
for Potato peeler (ANGELO PO) MPK10



ANGELO PO 3030900

**9720601 ABRASIVE DISC FOR POTATO PEELER  $\varnothing$  388 mm**  
fixing hole  $\varnothing$  25 mm - with pin groove 8x50 mm  
for Potato peeler (ANGELO PO) P10 - P102 - P20  
P202 - P5

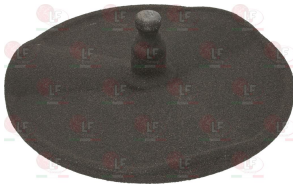


ANGELO PO PAP

ANGELO PO PAPC

ANGELO PO 3015450

**9735010 ABRASIVE DISC FOR POTATO PEELER  $\varnothing$  465 mm**  
fitting  $\varnothing$  34 mm  
for Potato peeler (ANGELO PO) MPK20



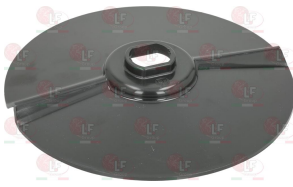
ANGELO PO 3030910

**9720041 DRUM F/POT.PEELER ABRASIVE DISC  $\varnothing$  65 mm**



ANGELO PO 36M5250

**9735004 EJECTOR DISC FOR VEGETABLE CHOPPER**  
external  $\varnothing$  195 mm - fitting  $\varnothing$  27x22 mm  
for Vegetables/mozzarella cutter (ANGELO PO) TV1  
TV1M - TV2L



ANGELO PO 36G6960

**9720020 POT.PEEL.CHAMBER BOTTOM  $\varnothing$  393 mm**  
for Potato peeler (ANGELO PO) P10 - P10M - P102  
P20 - P202 - P5



ANGELO PO 3600870

**9735006 VEGETABLE CHOPPER EJECTION SHOVEL**  
overall length 122 mm



ANGELO PO 3081350



## Abrasive sheets & clothes potato peelers

**9720904 ABRASIVE CLOTH 1245x215 mm**  
for Potato peeler (ANGELO PO) MPK10



ANGELO PO 3022470

**9720905 ABRASIVE CLOTH 1490x295 mm**  
for Potato peeler (ANGELO PO) MPK20



ANGELO PO 3040730

ANGELO PO 3113790

**9720903 ABRASIVE CLOTH 990x210 mm**  
for Potato peeler (ANGELO PO) MPK5



ANGELO PO 3080580

**9736002 VERTICAL PEG FOR POTATO PEELER**  
for Potato peeler (ANGELO PO) P10 - P10M - P102  
P20 - P202



ANGELO PO 36D9660

## Accident prevention devices-protections

**5027371 CARRIAGE PROTECTION OF POLYCARBONATE**  
max overall dimensions 145x210 mm  
holes mounting distance 86 mm - with screws MA6  
for ANGELO PO SLICER AFT35VS  
for OMS SLICER TGL250-TG220



ANGELO PO

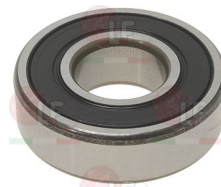
## Bearings

**1063901 BEARING 6204 DDU NSK**  
external  $\varnothing$  47mm - internal  $\varnothing$  20mm - thickness 14mm  
for Potato peeler (ANGELO PO) MPK10 - MPK20 - MPK5



ANGELO PO 3103840

**D063052 BEARING 6204-2RS SKF**  
single box packaging



ANGELO PO 3103840



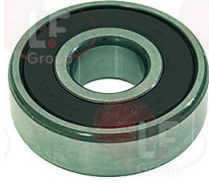
Suitable for:

# ANGELO PO



Suitable for:

**9720017 BEARING 6302 DDU NSK**  
 external  $\varnothing$  42mm - internal  $\varnothing$  15mm - thickness 13mm  
 for Potato peeler (ANGELO PO) P10 - P10M - P102  
 P20 - P202 - P5  
 for Vegetable washing machine (ANGELO PO) LCV  
 for Vegetables/mozzarella cutter (ANGELO PO) TV1  
 TV1M - TV2L



ANGELO PO 36F0090

## Belts

**9720004 MULTIGRIP BELT J 457 H26 10 GROOVES**



ANGELO PO 36G4900

**9062029 MULTIGRIP BELT J 483 H19 7 GROOVES**  
 for Potato peeler (ANGELO PO) MPK5



ANGELO PO 3029050

**9100067 MULTIGRIP BELT J 559 H19 7 GROOVES**  
 for Potato peeler (ANGELO PO) DP10



ANGELO PO 3022970

**9720003 MULTIGRIP BELT J 559 H28 11 GROOVES**  
 for Potato peeler (ANGELO PO) P10 - P10M - P102  
 P20 - P202 - P5  
 for Vegetable washing machine (ANGELO PO) LCV  
 for Vegetables/mozzarella cutter (ANGELO PO) TV1  
 TV1M - TV2L



ANGELO PO 36G6610

**9062030 MULTIGRIP BELT J 610 H28 11 GROOVES**  
 for Potato peeler (ANGELO PO) MPK10 - MPK20



ANGELO PO 3103890

**9062022 MULTIGRIP BELT TB2 1186 H14 6 GROOVES**  
 for Cutter (ANGELO PO) SC9VV



ANGELO PO 3049780

**9003663 MULTIGRIP BELT TB2 380 H20 9 GROOVES**



ANGELO PO 36G3890

**9003673 MULTIGRIP BELT TB2 660 H12 5 GROOVES**



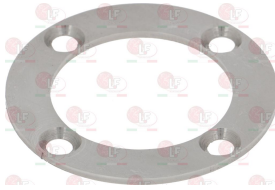
ANGELO PO 3042690





## Blades for cutters

**9710002** **BLADE GROUP FLANGE  $\varnothing$  63 mm**  
for Cutter (ANGELO PO) Q3 - Q3M - Q5 - Q5M - Q52  
Q8 - Q82



ANGELO PO 3190070

**9005027** **BOTTOM SMOOTH BLADE**  
length 123 mm - central hole  $\varnothing$  33 mm  
distance between holes 33 mm



ANGELO PO 3017950

**9005259** **DRUM FOR BLADE**  
overall length 82 mm  
square coupling 12x12 mm  
external  $\varnothing$  63 mm  
distance between mounting holes 52 mm  
for Cutter (ANGELO PO) Q3 - Q3M - Q5 - Q5M - Q52  
Q8 - Q8M - Q82



ANGELO PO 36G7010

**9710005** **PTFE DRUM FOR BLADE**  
shaft  $\varnothing$  20 mm - hub  $\varnothing$  85 mm  
overall height 295 mm



ANGELO PO 3038270

**9710001** **SPACING RING  $\varnothing$  63 mm**  
for Cutter (ANGELO PO) Q3 - Q3M



ANGELO PO 36G7040

**9710003** **SPACING RING  $\varnothing$  63 mm**  
for Cutter (ANGELO PO) Q5 - Q5M - Q52 - Q8 - Q82



ANGELO PO 36G0650

**9005026** **TOP SMOOTH BLADE**  
length 126 mm - central hole  $\varnothing$  33 mm  
distance between holes 33 mm



ANGELO PO 3017940

**9005260** **TOP-BOTTOM SMOOTH BLADE**  
overall length 134 mm  
central hole  $\varnothing$  42 mm  
distance between mounting holes 52 mm  
4-screw fastening  
for Cutter (ANGELO PO) Q3 - Q3M - Q5 - Q5M - Q52  
Q8 - Q8M - Q82



ANGELO PO 36G7030



Suitable for:

# ANGELO PO

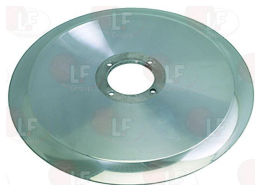


Suitable for:

## Blades for meat slicer

### 9006538 BLADE $\varnothing$ 350-57-4-280 MOD.C

B = outer  $\varnothing$  350 mm  
D = central hole  $\varnothing$  57 mm  
C = blade inner  $\varnothing$  280 mm  
4x fastening screws  
100CR6 forged steel



ANGELO PO 36G8610

### 9006559 BLADE 300-57-4-254 MOD.C W/EXTRACT.HOLES

B = outer  $\varnothing$  300 mm  
D = central hole  $\varnothing$  57 mm  
C = blade inner  $\varnothing$  254 mm  
4x fastening screws  
with extraction holes  
100CR6 forged steel



ANGELO PO 36D0550

### 9006539 BLADE 350-57-4-280 MOD.C W/EXTRACT.HOLES

B = outer  $\varnothing$  350 mm  
D = central hole  $\varnothing$  57 mm  
C = blade inner  $\varnothing$  280 mm  
4x fastening screws  
with extraction holes  
100CR6 forged steel



ANGELO PO 36G8610

## Bushings

### 9720040 BUSHING $\varnothing$ 20x16x19 mm

external  $\varnothing$  20 mm  
internal  $\varnothing$  16 mm  
height 19 mm  
for Potato peeler (ANGELO PO) P10 - P10M - P102  
P20 - P202 - P5  
for Vegetable washing machine (ANGELO PO) LCV



ANGELO PO 36G5950

### 9002559 GLACIER BUSH $\varnothing$ 32-28x30 mm

external  $\varnothing$  32 mm  
internal  $\varnothing$  28 mm  
height 30 mm  
for Slicer (ANGELO PO) AFT35



ANGELO PO 3043910

## Caps

### 9734002 FUNNEL TYPE PLUG

for Cutter (ANGELO PO) Q3 - Q3M - Q5 - Q5M - Q52  
Q8 - Q82



ANGELO PO 36Z6620

---

**Contactors**

---

- 5101019 CONTACTOR EATON DILEEM-10**  
6.6A 3Kw 400V - coil 230V 50/60Hz  
3 contacts NO - 1 NO auxiliary contact

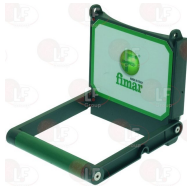
ANGELO PO 32Z4840

---

**Doors**

---

- 9386001 COMPLETE DOOR FOR POTATO PEELER**  
for Potato peeler (ANGELO PO) P10 - P10M - P102  
P20 - P202

ANGELO PO 6005390

---

**Drain hoses**

---

- 5032733 DRAIN PIPE  $\varnothing$  90/100x520 mm**  
external  $\varnothing$  100 mm - internal  $\varnothing$  90 mm  
length 520 mm  
for Potato peeler (ANGELO PO) P10 - P102 - P102M  
P20 - P202 - P5

ANGELO PO 35X1150

---

**Drain pumps**

---

- D422037 DRAIN PUMP IGNIS**  
100W - 220/240V 50Hz



ANGELO PO 32M3140

- D160042 FILTER FOR ELECTRIC PUMP WHIRLPOOL**  
self-cleaning



ANGELO PO 32M4990



Suitable for:



Suitable for:

## Eccentrics

**9707005 PLASTIC ECCENTRIC SIRMAN  $\varnothing$  85 mm**  
internal hole  $\varnothing$  18 mm - groove 8 mm  
with external stopping notch



ANGELO PO 3FL0209

## Electrical capacitors

**3068014 CAPACITOR DUCATI ENERGIA  $8\mu\text{F}$**   
450V 50/60Hz  
operating temperature  $-25^{\circ}\text{C}+85^{\circ}\text{C}$   
lead connection  $6.35\times 0.8$  mm  
 $\varnothing$  32xh55 mm



ANGELO PO 3222490

**3068142 CAPACITOR  $40\mu\text{F}$**   
450V 50/60Hz -  $\varnothing$  45xh91 mm



ANGELO PO 32V6540

**3068086 ELECTRIC CAPACITOR  $25\mu\text{F}$**   
450V 50/60Hz -  $\varnothing$  45xh71 mm



ANGELO PO 32V6440

**3068087 ELECTRIC CAPACITOR  $35\mu\text{F}$**   
450V 50/60Hz -  $\varnothing$  45xh91 mm



ANGELO PO 32V5980

**3068079 ELECTRIC CAPACITOR  $8\mu\text{F}$**   
450V 50/60Hz -  $\varnothing$  30xh71 mm

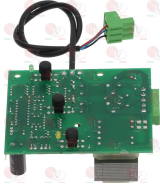


ANGELO PO 3222490



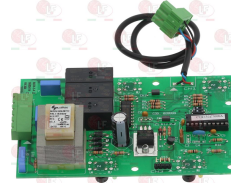
## Electronic boards

**9390003 CONTR.CIRCUIT BOARD KIT 1 SPEED 90x80 mm**  
complete with cable and terminal  
for Cutter (ANGELO PO) Q3 - Q3M - Q5 - Q5M - Q8  
for Vegetables/mozzarella cutter (ANGELO PO) TV1  
TV1M



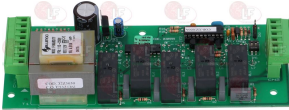
ANGELO PO 32Z6990

**9390004 CONTROL CIRCUIT BOARD 2 SPEEDS 130x80 mm**  
for Cutter (ANGELO PO) Q52 - Q82  
for Vegetables/mozzarella cutter (ANGELO PO) TV2L



ANGELO PO 32Z7000

**9390002 ELECTRON.CONTROL CIRCUIT BOARD 180x68 mm**  
for Potato peeler (ANGELO PO) P10 - P10M - P102  
P20 - P202  
for Vegetable washing machine (ANGELO PO) LCV



ANGELO PO 32Z3030

**9014049 MOTHERBOARD 230/400V**  
external dimensions 102x95 mm  
for Meat mincer (ANGELO PO) TG12 - TG12X - TG12XE



ANGELO PO 32V0740

**9014169 MOTHERBOARD 230/400V**  
external dimensions 127x43 mm  
for Slicer (ANGELO PO) AFC30MS - AFC30S - AFC35  
AFT30S - AFT30VS - AFT33S - AFT35 - AFT35VS



ANGELO PO 32Z7090

**9014079 3-PHASE ELECTRON.CIRCUIT BOARD 220/380V**  
external dimensions 130x44 mm



ANGELO PO 3019810

## Feet

**9313008 SUCTION FOOT WITH PIN M8**  
height without thread 35 mm  
base ø 47 mm  
for Slicer (ANGELO PO) AFC30MS - AFC30S - AFC35MS  
AFC35S - AFT30MS - AFT30S - AFT30VS - AFT33MS  
AFT33S - AFT33VS - AFT35MS - AFT35S - AFT35VS



ANGELO PO 36D4430

**9012015 SUCTION FOOT WITH SHAFT M5**  
length 10 mm  
base ø 37x26 mm



ANGELO PO 3019170





Suitable for:

# ANGELO PO



Suitable for:

## Fuses

**3049043 QUICK ACTING FUSE  $\varnothing$  5x20 mm - 10 PCS**  
250V 500mA



ANGELO PO 3201540

## Gaskets and seals

**9186006 CHAMBER BOTTOM GASKET 1200 mm**  
cross-section  $\varnothing$  7 mm  
for Potato peeler (ANGELO PO) P10 - P10M - P102  
P20 - P202 - P5  
for Vegetable washing machine (ANGELO PO) LCV



ANGELO PO 3151750

**9100065 COVER GASKET KIT  $\varnothing$  380 mm**  
complete with fitting adhesive tube  
cross-section 12x9 mm  
for Potato peeler (ANGELO PO) DP10



ANGELO PO 3022960

**9186030 COVER GASKET SOLD PER METER**  
cross-section 22x11 mm  
for Potato peeler (ANGELO PO) MPK10 - MPK20 - MPK5



ANGELO PO 3040740

**9720755 COVER GASKET 1270 mm**  
cross-section 12x12 mm  
for Potato peeler (ANGELO PO) P10 - P10M - P102  
P20 - P202 - P5  
for Vegetable washing machine (ANGELO PO) LCV



ANGELO PO 3707330

**9186032 DOOR GASKET**  
external dimensions 130x126 mm  
internal dimensions 90x80 mm  
for Potato peeler (ANGELO PO) MPK10



ANGELO PO 3024290

**9186033 DOOR GASKET**  
external dimensions 168x137 mm  
internal dimensions 118x87 mm  
for Potato peeler (ANGELO PO) MPK20



ANGELO PO 3103810

Suitable for:

**9186053 DOOR GASKET**  
external dimensions 128x125 mm  
internal dimensions 90x80 mm  
for Potato peeler (ANGELO PO) MPK5



ANGELO PO

Suitable for:

**9720702 DOOR GASKET**  
external dimensions 204x154 mm  
internal dimensions 175x125 mm  
for Potato peeler (ANGELO PO) P10 - P10M - P102  
P20 - P202 - P5



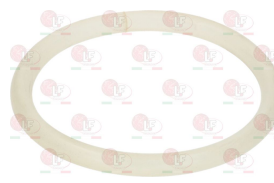
ANGELO PO 37Q7860

**9720707 DOOR GASKET**  
external dimensions 125x130 mm  
for Potato peeler (ANGELO PO) MPK5



ANGELO PO

**9100066 DOOR GASKET  $\varnothing$  195 mm**  
cross-section  $\varnothing$  15 mm  
for Potato peeler (ANGELO PO) DP10



ANGELO PO 3022890

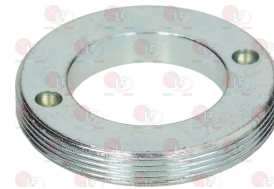
## Gears

**9720039 POTATO PEELER TRANSMISSION SHAFT 135 mm**  
for Potato peeler (ANGELO PO) P10 - P10M - P102  
P20 - P202 - P5



ANGELO PO 36G6590

**5034784 SCROLL ZINC-COATED FOR DRUM  $\varnothing$  48x8 mm**  
internal  $\varnothing$  29 mm



ANGELO PO 3103870

**5034783 SPACER  $\varnothing$  25x20x10 mm**



ANGELO PO 3103850

## Handles

**9242006 HANDLE END PIECE FOR BOTTOM TANK**  
for Cutter (ANGELO PO) Q3 - Q3M - Q5 - Q5M - Q52  
Q8 - Q82



ANGELO PO 36M5620

**9242007 HANDLE END PIECE FOR TOP TANK**  
for Cutter (ANGELO PO) Q3 - Q3M - Q5 - Q5M - Q52  
Q8 - Q82



ANGELO PO 36M5350



Suitable for:

**9720018 POTATO PEELER COVER HANDLE**  
length 210 mm  
for Potato peeler (ANGELO PO) P10 - P10M - P102  
P20 - P202 - P5  
for Vegetable washing machine (ANGELO PO) LCV



ANGELO PO 36M5090

Suitable for:

**9242002 POTATO PEELER DOOR HANDLE**  
for Potato peeler (ANGELO PO) P10 - P10M - P102  
P20 - P202 - P5



ANGELO PO 6005400

**9242003 TANK HANDLE 120 mm**  
for Cutter (ANGELO PO) Q5 - Q5M - Q52 - Q8 - Q82



ANGELO PO 35X1870

**9242004 TANK HANDLE 65 mm**  
for Cutter (ANGELO PO) Q3 - Q3M



ANGELO PO 35X1880

## Heating elements

**4033226 WELDING HEATING ELEMENT 680 mm**  
for Vacuum packer (ANGELO PO) MS2 - MS21



ANGELO PO 3048010

ANGELO PO 3049730

## Indicator lights

**3221293 INDICATOR LIGHT GREEN 250V**  
head  $\varnothing$  20 mm - hole  $\varnothing$  10 mm - 120°C



ANGELO PO 32W2970

## Ironmongery (screws, nuts, washers)

**9528022 CYLINDER HEAD SCREW M6x12**  
stainless steel - with hexagon socket  
UNI 5931 - DIN 912 - ISO 4762  
 $\varnothing$  head 10 mm - overall length 18 mm



ANGELO PO 31V0140

**9742006 FEATHER KEY ST. STEEL C40 6x6x25 mm**  
UNI 6604/A - DIN 6685/A



ANGELO PO 3191110



Suitable for:

**3528010 FLAT WASHER M6**  
 ø internal/external 6.4/12 mm - thickness 1.6 mm  
 st./steel - UNI 6592 - DIN 125 A - ISO 7089



ANGELO PO 3121480

Suitable for:

**3743145 FLAT WASHER M8**  
 internal/external ø 8.4/16 mm - thickness 1.6 mm  
 stainless steel - UNI 6592 - DIN 125 A - ISO 7089



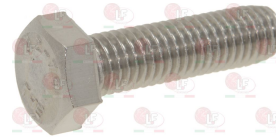
ANGELO PO 3120050

**1528630 HEXAGON HEAD SCREW M5x10**  
 stainless steel - UNI 5739 - DIN 933 - ISO 4017



ANGELO PO 31A0370

**9528028 HEXAGON HEAD SCREW M8x30**  
 stainless steel - UNI 5739 - DIN 933 - ISO 4017



ANGELO PO 31A9660

**3060069 HEXAGONAL NUT M8 MEDIUM**  
 stainless steel - UNI 5588 - DIN 934 - ISO 4032



ANGELO PO 3110050

ANGELO PO 33Q6470

**5017493 SCREWS WITH HEXAGON SOCKET M8x12**  
 stainless steel - conical edge  
 UNI 5927 - DIN 914 - ISO 4027



ANGELO PO 31W0280

**1186504 WASHER FLAT M10**  
 internal/external ø 10.5/20 mm - thickness 2 mm  
 stainless steel - UNI 6592 - DIN 125 A - ISO 7089



ANGELO PO 3120080

ANGELO PO 3128790

## Knives for meat mincers

**9014601 STAINLESS STEEL KNIFE F/MEAT MINCER 12**  
 model ENTERPRISE 12 self-sharpening  
 external ø 60 mm - square hole 12x12 mm



ANGELO PO 36X0710

**9014602 STAINLESS STEEL KNIFE F/MEAT MINCER 22**  
 model ENTERPRISE 22 self-sharpening  
 external ø 73 mm - square hole 13x13 mm



ANGELO PO 36X0730



Suitable for:

# ANGELO PO



Suitable for:

## Knobs

**9007542 BLACK KNOB  $\varnothing$  20 mm PITCH M6**  
with pin length 12 mm



ANGELO PO 36M6800

## Labels for control panels

**9399003 CONTROL PLATE**  
dimensions 175x60 mm



ANGELO PO 37M1610

**9399004 CONTROL PLATE**  
dimensions 175x60 mm  
for Potato peeler (ANGELO PO) P5



ANGELO PO 37M4770

**9399002 SUPPORTING PANEL**  
size 175x60 mm



ANGELO PO 30A3620

## Lids

**9734021 COVER FOR POTATO PEELER  $\varnothing$  348 mm**  
for Potato peeler (ANGELO PO) MPK5



ANGELO PO 3108270

**9720504 COVER FOR POTATO PEELER  $\varnothing$  430 mm**  
for Potato peeler (ANGELO PO) P10 - P10M - P102  
P20 - P202 - P5  
for Vegetable washing machine (ANGELO PO) LCV



ANGELO PO 36Z6500

ANGELO PO 36Z6501

**9720505 BRACKET FOR POTATO PEELER MAGNET**  
for Potato peeler (ANGELO PO) P10 - P10M - P102  
P20 - P202 - P5  
for Vegetable washing machine (ANGELO PO) LCV



ANGELO PO 35V6381

ANGELO PO 35V6381+3600310



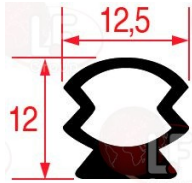


# ANGELO PO



Suitable for:

**9720755 COVER GASKET 1270 mm**  
cross-section 12x12 mm  
for Potato peeler (ANGELO PO) P10 - P10M - P102  
P20 - P202 - P5  
for Vegetable washing machine (ANGELO PO) LCV



ANGELO PO 37Q7330

Suitable for:

**9720018 POTATO PEELER COVER HANDLE**  
length 210 mm  
for Potato peeler (ANGELO PO) P10 - P10M - P102  
P20 - P202 - P5  
for Vegetable washing machine (ANGELO PO) LCV



ANGELO PO 36M5090

**9734022 COVER FOR POTATO PEELER ø 430 mm**  
for Potato peeler (ANGELO PO) MPK10



ANGELO PO 3057890

**9734023 COVER FOR POTATO PEELER ø 508 mm**  
for Potato peeler (ANGELO PO) MPK20



ANGELO PO 3176600

ANGELO PO 36Z1450

**9100078 CUTTER LID ø 210 mm**  
complete with cap and fittings  
for Cutter (ANGELO PO) Q3 - Q3M - Q5 - Q5M - Q52  
Q8 - Q82



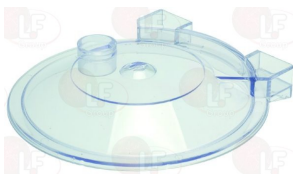
ANGELO PO 6000920

**9734001 CUTTER LID ø 210 mm**  
for Cutter (ANGELO PO) Q3 - Q3M - Q5 - Q5M - Q52  
Q8 - Q82



ANGELO PO 36Z0665

**5027273 CUTTER LID ø 225 mm**



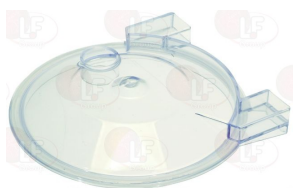
ANGELO PO 3016940

**9720038 CUTTER LID ø 225 mm**  
complete with gasket



ANGELO PO 3031610

**9734008 CUTTER LID ø 265 mm**  
complete with gasket



ANGELO PO 3036980

**9734038 TANK PROTECTION MADE OF PLASTIC**  
complete with fastening set  
width 230 mm - overall length 235 mm



ANGELO PO 3601450



Suitable for:

# ANGELO PO



Suitable for:

## Magnets

**9720505 BRACKET FOR POTATO PEELER MAGNET**  
 for Potato peeler (ANGELO PO) P10 - P10M - P102  
 P20 - P202 - P5  
 for Vegetable washing machine (ANGELO PO) LCV



ANGELO PO 35V6381

ANGELO PO 35V6381+3600310

**9240027 LID MAGNET**  
 external  $\varnothing$  22 mm - M5x10 mm  
 for Potato peeler (ANGELO PO) MPK10 - MPK20 - MPK5

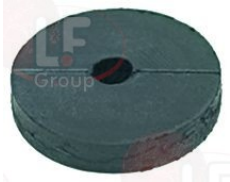


ANGELO PO 3008810

ANGELO PO 3112370

ANGELO PO 3600090

**9014008 MAGNET WITH HOLE  $\varnothing$  20x4 mm**  
 for Potato peeler (ANGELO PO) P10 - P10M - P102  
 P20 - P202 - P5  
 for Vegetable washing machine (ANGELO PO) LCV



ANGELO PO 3600310

**3240148 MAGNET 63x19x11 mm**

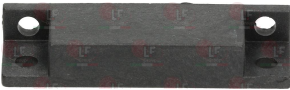


ANGELO PO 3023650

ANGELO PO 32W0870

ANGELO PO 32W1680

**3240181 PROTECTED MAGNET 63x18.8x10.8 mm**  
 distance between fastening holes 52 mm



ANGELO PO 3210010

**9014042 RECTANGULAR MAGNETIC UNIT M302**  
 36x13x8 mm



ANGELO PO 32V0080

**9014006 ROUND MAGNET  $\varnothing$  12x6 mm**  
 for Cutter (ANGELO PO) Q3 - Q3M - Q5 - Q5M - Q52  
 Q8 - Q82  
 for Potato peeler (ANGELO PO) P10 - P10M - P102  
 P20 - P202 - P5  
 for Vegetables/mozzarella cutter (ANGELO PO) TV1  
 TV1M - TV2L



ANGELO PO 3600160

**Meat hold arm****5015670 MOZZARELLA CUTTER PRESSING LEVER 144 mm**

ANGELO PO 3039590

**9703001****VEGETABLE PRESSING LEVER**for Vegetables/mozzarella cutter (ANGELO PO) TV1  
TV1M - TV2L

ANGELO PO 6000760

**Meat rammers****9715002 MASHER VEGET. CHOPPER  $\varnothing$  54/40.5x183 mm**  
for Vegetables/mozzarella cutter (ANGELO PO) TV1  
TV1M - TV2L

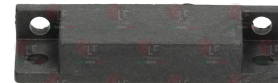
ANGELO PO 6000770

**Microswitches, magnetic****9240029 MAGNETIC MICROSWITCH  $\varnothing$  10x34 mm**  
0.5A 250V 10W - double contact NO-NO  
with cable length 1450 mm  
for Potato peeler (ANGELO PO) MPK10 - MPK20 - MPK5

ANGELO PO 3022230

**3240179 MAGNETIC MICROSWITCH E5301C**  
0.4A 250V - contact NO - head 65x20x9 mm  
with cable length 500 mm

ANGELO PO 32W1210

**3240181 PROTECTED MAGNET 63x18.8x10.8 mm**  
distance between fastening holes 52 mm

ANGELO PO 3210010



# ANGELO PO



Suitable for:

**3240717 MAGNETIC MICROSWITCH E5501V**  
0.04A 250V - NO contact - head 37x16x9 mm  
with cable length 2000 mm



ANGELO PO 32V5740

Suitable for:

**9100050 MAGNETIC MICROSWITCH PSA60010**  
2A 240Vac - contact NO - head 52x16x7 mm  
with cable length 350 mm  
for Potato peeler (ANGELO PO) DP10 - DP25



ANGELO PO 3022950

**3240498 MAGNETIC MICROSWITCH STEM D102 1B**  
1-NO 1A 250V 50W  
cylindrical deflector  $\varnothing$  10x33 mm thread M10x0.75  
cable length 2000 mm



ANGELO PO 32W1890

ANGELO PO 32W3460

**3240256 MAGNETIC MICROSWITCH STEM E550 1B**  
1 contact NO 250V 1A 50W  
cable length 1200 mm



ANGELO PO 32W2160

**3240148 MAGNET 63x19x11 mm**



ANGELO PO 3023650

ANGELO PO 32W0870

ANGELO PO 32W1680

**9014015 MICROSWITCH MAGNETIC STEM D102 1V**  
0.04A 250V - contact NO  
cylindric sensor  $\varnothing$  10x33 mm - thread M10x0.75  
with cable length 750 mm  
for Cutter (ANGELO PO) Q3 - Q3M - Q5 - Q5M - Q52  
Q8 - Q82  
for Potato peeler (ANGELO PO) P10 - P10M - P102P  
P20 - P202 - P5  
for Vegetable washing machine (ANGELO PO) LCV  
for Vegetables/mozzarella cutter (ANGELO PO) TV1  
TV1M - TV2L



ANGELO PO 32W3200

ANGELO PO 32W3240

ANGELO PO 32Z8650

**3240148 MAGNET 63x19x11 mm**



ANGELO PO 3023650

ANGELO PO 32W0870

ANGELO PO 32W1680

**Microswitches, mechanical****3803071 MICROSWITCH BITRON 16A 250V**

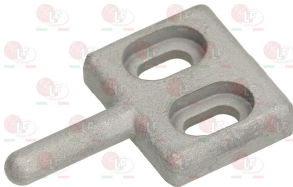
ANGELO PO

**3240189 MICROSWITCH ELECTRICA NR3K5  
10A 250V**

ANGELO PO 32W3020

**3250071 MICROSWITCH SPRING  $\varnothing$  13x25 mm**

ANGELO PO 36G7140

**5003350 ROD MICROSWITCH 48x30 mm**

ANGELO PO 36D8360

**3240410 MICROSWITCH 16(4)A 250V**

ANGELO PO 32W0960

ANGELO PO 32W1660

ANGELO PO 32W3340

**3240234 LIMIT SWITCH PIN**

ANGELO PO 36G6040

ANGELO PO 36G6041

**3240235 RING NUT M16x1.5 mm**

ANGELO PO 33Q5610





Suitable for:

# ANGELO PO



Suitable for:

## O-Ring and ORM gaskets

**5060454 O-RING 02137 SILICONE**  
ring thickness 1.78 mm - internal  $\varnothing$  34.65 mm



ANGELO PO 3152370

**1186356 O-RING 03075 EPDM**  
ring thickness 2.62 mm - internal  $\varnothing$  18.72 mm



ANGELO PO 3150410

**3186244 O-RING 03125 EPDM**  
ring thickness 2.62 mm - internal  $\varnothing$  31.42 mm



ANGELO PO 3021610

**3186143 O-RING 04093 EPDM**  
ring thickness 3.53 mm - internal  $\varnothing$  23.40 mm



ANGELO PO 3150520

**3186014 O-RING 06225 EPDM  $\varnothing$  67 mm**  
ring thickness 5.34 mm - internal  $\varnothing$  56.52 mm



ANGELO PO 3150430

ANGELO PO 3151960

ANGELO PO 37Q5260

## Pulleys

**9062055 FLAT PULLEY  $\varnothing$  157 mm**  
height 30 mm - internal hole  $\varnothing$  15 mm  
for Potato peeler (ANGELO PO) P10 - P10M - P102  
P20 - P202 - P5  
for Vegetable washing machine (ANGELO PO) LCV  
for Vegetables/mozzarella cutter (ANGELO PO) TV1  
TV1M - TV2L



ANGELO PO 36G6600

**5032166 MULTIGRIP PULLEY  $\varnothing$  28 mm**  
height 37 mm -  $\varnothing$  hole 14 mm - 12 grooves  
for Vegetable washing machine (ANGELO PO) LCV  
for Vegetables/mozzarella cutter (ANGELO PO) TV1  
TV1M - TV2L



ANGELO PO 36G0030

**5013110 MULTIGRIP PULLEY  $\varnothing$  38 mm**  
height 37 mm -  $\varnothing$  hole 14 mm - 12 grooves  
for Potato peeler (ANGELO PO) P10 - P102 - P102M  
P20 - P202 - P5



ANGELO PO 36G6620

**5037093 SPACING RING FOR PULLEY  $\varnothing$  28x4x12 mm**



ANGELO PO 3103880



## Scrapers and accessories

- 9741002 COVER SCRAPER 165 mm**  
for Cutter (ANGELO PO) Q3 - Q3M - Q5 - Q5M - Q52  
Q8 - Q82



ANGELO PO 35Q9120

ANGELO PO 35V4070

## Shock absorbers

- 5049702 SHOCK ABSORBER FOR LID 0150N**  
082422  
overall length 240 mm  
for VACUUM PACKER MS2- MS2I-MS04



ANGELO PO 3024320

## Solenoid valves

- 3120004 SOLEN. VALVE ELBI TYPE 319 1 WAY 90°**  
220/240V 50/60Hz - max. temperature 90°C  
inlet 3/4" - outlet ø 10.5 mm



ANGELO PO 33D1370

ANGELO PO 33D1371

- 3120504 SOLEN. VALVE ELBI TYPE 319 1 WAY 90°**  
24V 50/60Hz - max. temperature 90°C  
inlet 3/4" - outlet ø 10.5 mm



ANGELO PO

## Spare parts for pumps

- D160042 FILTER FOR ELECTRIC PUMP WHIRLPOOL**  
self-cleaning



ANGELO PO 32M4990



Suitable for:

# ANGELO PO



Suitable for:

## Supports

5037092 SPACING RING  $\varnothing$  45x35x10 mm



ANGELO PO 3103860

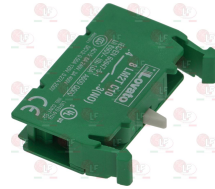
## Switches

9100044 **BLACK START PUSH-BUTTON 3A 240V**  
SCHNEIDER - 1 normally open contact  
with push-button cap  
mounting hole  $\varnothing$  22 mm  
for Potato peeler (ANGELO PO) DP10 - DP25



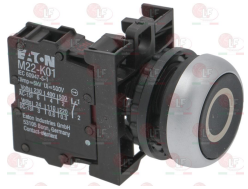
ANGELO PO 3022910

3319354 **CONTACT LOVATO 6A 240V**  
1 CONTACT NO



ANGELO PO 32W3320

9319019 **FLUSH PUSH-BUTTON BLACK SIMB. "O"**  
MOELLER-EATON - 1 contact NC  
mounting hole  $\varnothing$  22 mm  
for Meat mincer (ANGELO PO) TC22S



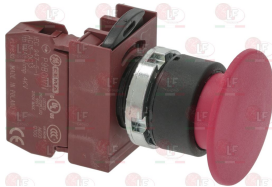
ANGELO PO 32W2050

9319018 **FLUSH PUSH-BUTTON MATT WHITE SIMB. "I"**  
MOELLER-EATON - 1 contact NO  
mounting hole  $\varnothing$  22 mm  
for Potato peeler (ANGELO PO) MPK10 - MPK20 - MPK5



ANGELO PO 3106510

9014064 **MUSHROOM PUSH-BUTTON RED 4A 400V**  
CEMA - 1 contact NC  
mounting hole  $\varnothing$  22 mm



ANGELO PO 3022900

9319043 **PROTRUD. PUSH-BUTTON MATT RED SYMBOL O**  
MOELLER-EATON - 1 contact NC  
mounting hole  $\varnothing$  22 mm  
for Potato peeler (ANGELO PO) MPK10 - MPK20 - MPK5

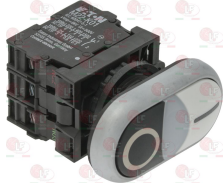


ANGELO PO 3106490

ANGELO PO 3272800

Suitable for:

**9014050 PUSH-BUTT.PANEL 0-I WHITE-BLACK 15A 500V**  
 MOELLER-EATON - with LED indicator light 12/30V  
 1 NC contact  
 1 NO contact  
 mounting hole  $\varnothing$  22 mm  
 for Meat mincer (ANGELO PO) TG12 - TG12X - TG12XE



ANGELO PO 32W2030

Suitable for:

**9014066 PUSH-BUTTON GREEN 16A 250V GIOVENZANA**  
 with indicator light  
 1 contact NO  
 mounting hole  $\varnothing$  22 mm  
 for Potato peeler (ANGELO PO)



ANGELO PO

**9319052 RED STOP PUSH-BUTTON 16A 600V**  
 GIOVENZANA - with push-button cap  
 1 normally closed contact  
 mounting hole  $\varnothing$  22 mm



ANGELO PO LF-5025010

**9014072 SMALL PUSH-BUTTON PANEL 0-I WITH BOARD**  
 with cable  
 external dimensions 120x47 mm



ANGELO PO 3018180

## Tapes

**9180103 PTFE BAND HEIGHT 45 mm - 3 m**  
 for VACUUM PACKAGING MACHINE



ANGELO PO 3071800

## Terminal blocks

**3247015 TERMINAL BLOCK 12-POLES OF PLASTIC**  
 for cable max 4 mm<sup>2</sup>  
 operating temperature 150°C  
 nominal voltage 450V



ANGELO PO 32D1450

**3247003 TERMINAL BLOCK 2-POLES CERAMIC**  
 for cable - max 4 mm<sup>2</sup>  
 operating temperature 300°C  
 nominal voltage 450V  
 dimensions 21x18x16 mm



ANGELO PO 3000060



Suitable for:

# ANGELO PO



**3247016** **TERMINAL BLOCK 3-POLES FV273 40A 450V**  
for cable max 6 mm<sup>2</sup>  
operating temperature 150°C  
nominal voltage 450 V



ANGELO PO 32D0171

ANGELO PO 32D0380

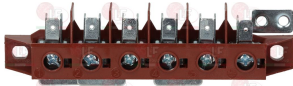
Suitable for:

**3247011** **TERMINAL BLOCK 6-POLES FV122 40A 600V**  
for cable max 6 mm<sup>2</sup>  
operating temperature 150°C  
nominal voltage 450 V



ANGELO PO 32D1700

**3247009** **TERMINAL BLOCK 6-POLES FV122/B 40A 600V**  
for cable max 6 mm<sup>2</sup>  
operating temperature 150°C  
nominal voltage 450 V



ANGELO PO 32D0250

ANGELO PO 32D0251

ANGELO PO 32D1700

## Timers

**9446009** **SINGLE-PHASE TIMER KIT 4 MINUTES M24**  
complete with knob  
mechanical movement with balance wheel  
manually set mechanical timer  
4 minutes manually set cycle  
contact capacity 16(4)A 250V  
max temperature 125°C  
D-shaped pin  $\varnothing$  6x4.6 mm  
for Potato peeler (ANGELO PO) MPK10 - MPK20 - MPK5



ANGELO PO 3075990

**9446010** **THREE-PHASE TIMER KIT 4 MINUTES M24**  
complete with knob  
mechanical movement with balance wheel  
manually set mechanical timer  
4 minutes manually set cycle  
contact capacity 16(4)A 250V  
max temperature 125°C  
D-shaped pin  $\varnothing$  6x4.6 mm  
for Potato peeler (ANGELO PO) MPK20



ANGELO PO 3075980

**9446004** **TIMER KIT 5 MINUTES T2035M**  
complete with knob  
mechanical movement with balance wheel  
manually set mechanical timer  
5 minutes manually set cycle  
SINGLE-POLE with contact capacity 15(3)A 240V  
max temperature 55°C  
D-shaped pin  $\varnothing$  6x4.6 mm  
for Potato peeler (ANGELO PO) P5



ANGELO PO 32Z5560

**9100068** **TIMER 6 MINUTES KIT**  
complete with screenprinted plate, knob, accessories  
mechanical movement with balance wheel  
manually set mechanical timer  
6 minutes manually set cycle  
contact capacity 16(4)A 250V  
max temperature 125°C  
D-shaped pin  $\varnothing$  6x4.6 mm  
for Potato peeler (ANGELO PO) DP10 - DP25



ANGELO PO 3057420





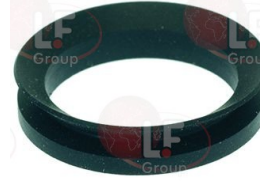
## Watertight seals and rings

**9186007 GASKET FOR BOILING PAN SHAFT  $\varnothing$  20x6 mm**  
for Cutter (ANGELO PO) Q3 - Q3M - Q5 - Q5M - Q52  
Q8 - Q82



ANGELO PO 3151760

**9186042 SEALING GASKET V RING  $\varnothing$  35x27x8 mm**  
for Vegetable washing machine (ANGELO PO) LCV



ANGELO PO 3151410

**9186031 SEALING RING NBR 70 42x25x7 mm**  
for Potato peeler (ANGELO PO) MPK10 - MPK20 - MPK5



ANGELO PO 3103830

**9186052 SEALING RING 40x28x7 mm**  
for Vegetables/mozzarella cutter (ANGELO PO) TV1  
TV1M - TV2L



ANGELO PO 3151280

**9720016 SEALING RING 42x28x7 mm**  
for FIMAR POT.PEELER PLN-PPN-LCN5-LCN10-LCN18  
for FIMAR VEGETABLE WASHER LAV  
for ANGELOPO POT.PEELER P5-P10-P10M-P20-P102-P202  
for ANGELOPO VEGET.WASH.MACHINE LCV



ANGELO PO 3151300

**9186005 SEALING RING 42x29x4.5 mm**  
for Potato peeler (ANGELO PO) P10 - P10M - P102  
P20 - P202 - P5  
for Vegetable washing machine (ANGELO PO) LCV



ANGELO PO 3190830

The data herewith contained may change without notice and LF SpA cannot be held responsible for possible errors stated or resulting by the use of this document. All rights reserved. No part of this publication may be reproduced without written permission by LF SpA.



## Distributing Components, Spare Parts & Accessories in original quality worldwide

- 
- LF SpA HEADQUARTERS**  
via Voltri, 80 - 47522 Cesena (FC) ITALY  
Tel. +39 0547 34 11 11 - Fax +39 0547 34 11 10  
[www.lfricambi724.it](http://www.lfricambi724.it) - [info@lfricambi.it](mailto:info@lfricambi.it)  
Export Dept. Tel. +39 0547 34 11 50 - Fax +39 0547 34 11 55  
[www.lfspareparts724.com](http://www.lfspareparts724.com) - [export@lfspareparts.com](mailto:export@lfspareparts.com)
- LF SpA HOUSEHOLD COMPONENTS DIVISION**  
Via Padriciano, 99 - AREA Science Park - 34149 Trieste (TS) ITALY  
Tel. +39 0547 34 12 42 - Fax +39 0547 34 12 48  
[www.lfspareparts724.com](http://www.lfspareparts724.com) - [info@lfspareparts.com](mailto:info@lfspareparts.com)
- EPGC Sas FRANCE**  
13, Rue des Forts - 59960 Neuville en Ferrain  
Tel. +33 (0)3 20 25 06 21 - Fax +33 (0)3 20 25 34 12  
[www.epgc.com](http://www.epgc.com) - [epgc@epgc.com](mailto:epgc@epgc.com)
- LF GmbH GERMANY**  
Junkersstrasse, 3 - D-82178 Puchheim - München  
Tel. +49 89 89 45 78 66 - Fax +49 89 89 45 78 88  
[www.lfersatzteile724.de](http://www.lfersatzteile724.de) - [info@lfersatzteile.de](mailto:info@lfersatzteile.de)
- LF China REPUBLIC OF CHINA**  
Room 403, No.2, Huadu Mansion, Lane 422, Huanghua Rd.  
Minhang Dist. - 201103 Shanghai  
Tel. +86 (0)21 33 53 66 31 - Fax +86 (0)21 33 53 66 32  
[www.lfspareparts724.com](http://www.lfspareparts724.com) - [china@lfspareparts.com](mailto:china@lfspareparts.com)
- OOO LF RUSSIAN FEDERATION**  
Ul. Anatoliya Zhivova, 8 - office 1 - 123100 Moscow  
Tel./Fax +7 495 725 26 53  
[www.lfspareparts724.ru](http://www.lfspareparts724.ru) - [info@lfspareparts.ru](mailto:info@lfspareparts.ru)
- LF Repuestos Horeca S.L.U. SPAIN**  
Poligono Industrial Carpetania - C/Miguel Faraday, 8 - 28906 Getafe  
Tel. +34 91 477 91 00 - Fax +34 91 477 90 81  
[www.lfrepuestos-horeca724.es](http://www.lfrepuestos-horeca724.es) - [info@lfrepuestos.es](mailto:info@lfrepuestos.es)
- LF Scandinavia Aps - LF Spareparts S.p.A. DENMARK**  
Nupark, 51 - 7500 Holstebro  
Tel. +45 70 70 77 33  
[www.lfspareparts724.dk](http://www.lfspareparts724.dk) - [denmark@lfspareparts.dk](mailto:denmark@lfspareparts.dk)
- LF SpA Cesena (IT) Swiss Branch Steinhausen SWITZERLAND**  
Sennweidstrasse, 45 - CH-6312 Steinhausen  
Tel. +41 (0)41 760 15 80/1 - Fax +41 (0)41 760 15 85  
[www.lfersatzteile724.ch](http://www.lfersatzteile724.ch) - [info@lfersatzteile.ch](mailto:info@lfersatzteile.ch)
- LF Spare Parts Ltd. UNITED KINGDOM**  
A10a Lakeside Business Park, Broadway Lane  
South Cerney, Gloucestershire GL7 5XL  
Tel. +44 (0)1285 86 16 25 - Fax +44 (0)1285 86 39 49  
[www.lfspareparts724.co.uk](http://www.lfspareparts724.co.uk) - [info@lfspareparts.co.uk](mailto:info@lfspareparts.co.uk)
- LF Central Est Europe S.r.o. CZECH REPUBLIC**  
Antala Staska 1859/34  
14000 Praha 4 - KRC  
Tel. +420 730 156 910  
[www.lfspareparts724.cz](http://www.lfspareparts724.cz) - [info@lfspareparts.cz](mailto:info@lfspareparts.cz)
- LF SPARE PARTS INC. USA**  
Legal address:  
155 Office Plaza Dr - Suite A - Tallahassee, FL 32301  
Business/Mailing address:  
1100 South Tower, 225 Peachtree St., N.E. - Atlanta, GA 30303, USA  
Tel. +1-404-525-2600 - Fax +1-404-586-3528  
[www.lfspareparts724.us](http://www.lfspareparts724.us) - [info@lfspareparts.us](mailto:info@lfspareparts.us)  
Tel. West Coast and Midwest: 206-349-1525 Sauro  
Tel. East Coast and the Caribbean: 786-817-1764 Luis
- 
- AUSTRALIA AND NEW ZEALAND**  
[www.lfspareparts724.com](http://www.lfspareparts724.com)  
[andrea.calvio@lfspareparts.com](mailto:andrea.calvio@lfspareparts.com)
- AUSTRIA**  
[www.lfersatzteile724.at](http://www.lfersatzteile724.at)  
[info@lfersatzteile.at](mailto:info@lfersatzteile.at)
- BALKAN COUNTRIES**  
[www.lfspareparts724.com](http://www.lfspareparts724.com)  
[matija.ramov@lfspareparts.com](mailto:matija.ramov@lfspareparts.com)
- BALTIC COUNTRIES**  
[www.lfspareparts724.com](http://www.lfspareparts724.com)  
[inara.silina@lfspareparts.com](mailto:inara.silina@lfspareparts.com)
- LATIN AMERICA AND THE CARRIBEANS**  
[www.lfrepuestos-horeca724.es](http://www.lfrepuestos-horeca724.es)  
[export@lfrepuestos.es](mailto:export@lfrepuestos.es)
- POLAND**  
[www.lfspareparts724.pl](http://www.lfspareparts724.pl)  
[info@lfspareparts.pl](mailto:info@lfspareparts.pl)
- SOUTH KOREA**  
[www.lfspareparts724.com](http://www.lfspareparts724.com)  
[fabio.doni@lfspareparts.com](mailto:fabio.doni@lfspareparts.com)
- TURKEY**  
[www.lfyedekparca724.com](http://www.lfyedekparca724.com)  
[export@lfspareparts.com](mailto:export@lfspareparts.com)