



Spare parts for the professional sector:
Food processing equipment



Suitable for:

SIRMAN



This catalogue is automatically generated.
Therefore, the sequence of the items might
not be always shown at best.
Updates will be issued in case of additions
and/or amendments.

*Suitable **universal spare parts** may not be included*





Suitable for:

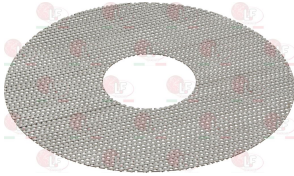
SIRMAN



Suitable for:

Abrasive discs for potato peeler

5035002 *****
middle hole \varnothing 100 mm



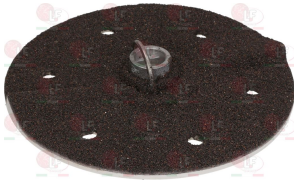
SIRMAN IV2420600

5048842 *****



SIRMAN MF2182

9720624 **ABRASIVE DISC FOR POTATO PEELER \varnothing 280 mm**
fixing hole \varnothing 28x15 mm
for MACHINES WITH LONG EXTRACTABLE SHAFT
for Potato peeler (SIRMAN) PP4ECOCE - PP4EXPOCE
PP8ECOCE - PP8EXPOCE



SIRMAN RGE04110

SIRMAN RG04022

SIRMAN RG04025

SIRMAN RG04025+RG04022

SIRMAN RG04026

SIRMAN RG04028

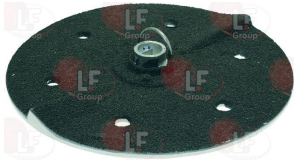
SIRMAN 9720624

9735018 **ABRASIVE DISC FOR POTATO PEELER \varnothing 310 mm**
fixing hole \varnothing 28 mm
with pin groove 33x28 mm
for Potato peeler (SIRMAN) PPJ10CE



SIRMAN IV98406210

9720625 **ABRASIVE DISC FOR POTATO PEELER \varnothing 350 mm**
fixing hole \varnothing 28x15 mm - OLD MODEL
for Potato peeler (SIRMAN) PP15EXPOCE



SIRMAN RG15025

SIRMAN RG15026

SIRMAN RG15028

9735019 **ABRASIVE DISC FOR POTATO PEELER \varnothing 380 mm**
fixing hole \varnothing 28 mm - with pin groove 33x28 mm
for Potato peeler (SIRMAN) PPJ20CE



SIRMAN IV98406220

5018695 **BLADE SMOOTH DISKS DF**
max dimensions 91x30 mm
distance between holes 82 mm



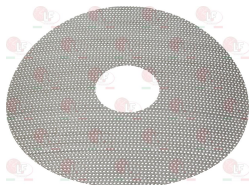
SIRMAN IV2680000

5028412 **DICING DISC VEG. CHOPPER 10x10x10 mm**
external \varnothing 210 mm - coupling hole \varnothing 38 mm



SIRMAN 40751PS10

5027055 **DISK 20 Kg \varnothing 390 mm**
middle hole \varnothing 100 mm



SIRMAN IV2426600

5049040 **EMULSIFYING BLACK DISK \varnothing 130 mm**
lower \varnothing 110 mm - height 21 mm
for CUTTER PACOJET



SIRMAN PJET42273

Suitable for:

5035109 GRATING DISC FOR VEG. CHOPPER DTV 1 mm
external \varnothing 205 mm - fixing hole \varnothing 19 mm



SIRMAN 40751DTV

SIRMAN 40751DTV

Suitable for:

5051540 GRATING DISC FOR VEGETABLE CHOPPER DT2
external \varnothing 205 mm - fixing hole \varnothing 19 mm



SIRMAN 40751DT02

5038942 GRATING DISC FOR VEGETABLE CHOPPER DT3
external \varnothing 205 mm - fixing hole \varnothing 19 mm



SIRMAN 40751DT03

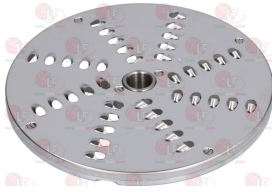
SIRMAN 40751DT3

5038244 GRATING DISC FOR VEGETABLE CHOPPER DT4
external \varnothing 205 mm - fixing hole \varnothing 19 mm



SIRMAN 40751DT04

5037981 GRATING DISC FOR VEGETABLE CHOPPER DT7
external \varnothing 205 mm - fixing hole \varnothing 19 mm



SIRMAN 40751DT07

5015666 GRATING DISC FOR VEGETABLE CHOPPER DT9
external \varnothing 205 mm - fixing hole \varnothing 19 mm



SIRMAN IV2620070

SIRMAN 40751DT09

5057232 SLICING DISC VEG. CHOPPER CURVED SL. 5mm
external \varnothing 205 mm - fixing hole \varnothing 19 mm



SIRMAN 40751DF05

5028413 SLICING DISC VEG. CHOPPER 10 mm DF10
 \varnothing ext. 205 mm - \varnothing fixing hole 19 mm



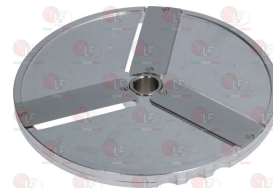
SIRMAN 40751DF10

5074447 SLICING DISC VEGETABLE CHOPPER 14 mm
external \varnothing 205 mm - coupling hole \varnothing 19 mm



SIRMAN 40751DF14

5018697 SLICING DISC VEGETABLE CHOPPER 2 mm DF02
external \varnothing 205 mm - fixing hole \varnothing 19 mm

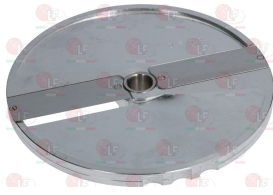


SIRMAN 40751DF02



Suitable for:

5032573 SLICING DISC VEGETABLE CHOPPER 3 mm DF03
external \varnothing 205 mm - fixing hole \varnothing 19 mm



SIRMAN 40751DF03

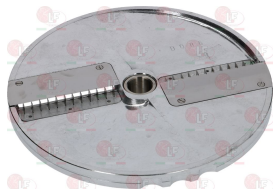
Suitable for:

5018695 BLADE SMOOTH DISKS DF
max dimensions 91x30 mm
distance between holes 82 mm



SIRMAN IV2680000

5034424 STICK-CUTT. DISC VEG. CHOPPER 6x6 mm
external \varnothing 205 mm - fixing hole \varnothing 19 mm



SIRMAN 40751DQ06

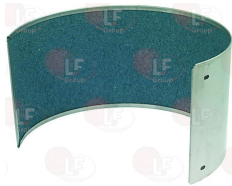
9735006 VEGETABLE CHOPPER EJECTION SHOVEL
overall length 122 mm
for Vegetables/mozzarella cutter (SIRMAN) TM



SIRMAN 40751DESP

Abrasive sheets & clothes potato peelers

9720907 ABRASIVE BLADE FOR POTATO PEELER
height 285 mm
for Potato peeler (SIRMAN) PP15EXPOCE



SIRMAN RG15016

9736003 ABRASIVE BLADE FOR POTATO PEELER
height 205 mm
for Potato peeler (SIRMAN) PP4EXPOCE



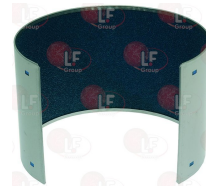
SIRMAN RG04016

9736004 ABRASIVE BLADE FOR POTATO PEELER
height 265 mm
for Potato peeler (SIRMAN) PP8EXPOCE



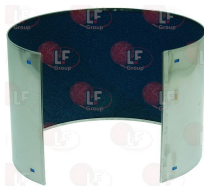
SIRMAN RG08016

9736005 ABRASIVE BLADE FOR POTATO PEELER
height 215 mm
for Potato peeler (SIRMAN) PPJ10CE



SIRMAN IV2420695

9736006 ABRASIVE BLADE FOR POTATO PEELER
height 280 mm
for Potato peeler (SIRMAN) PPJ20CE



SIRMAN IV2426695



Accident prevention devices-protections

9014155 BLACK ARM HANDLE \varnothing 30 mm
 thread \varnothing 10 mm - clamp \varnothing 64 mm
 for Slicer (SIRMAN) - Series AGATA
 Series AUTOMATICA - Series GEMMA - Series LEONARDO
 Series MIRRA - Series OPALE - Series SELCE
 Series VAS - Series VCO - Series VCS



SIRMAN 19562904

SIRMAN 19564021

5053129 SPACER FOD HANDLE \varnothing 14x121 mm
 overall length 157 mm
 thread M10



SIRMAN 19541509

5032084 CARRIAGE PROTECTION OF POLYCARBONATE
 max. overall dimensions 150x155 mm
 distance between holes 87 mm
 for Slicer (SIRMAN) MINIV250CE - MINI250CE
 QUARZO250CE - QUARZO250UL



SIRMAN 19562320

SIRMAN 19562325

5039327 CARRIAGE PROTECTION OF POLYCARBONATE
 max. overall dimensions 330x150 mm
 distance between holes 100/60 mm



SIRMAN 19562344.09

5046977 CARRIAGE PROTECTION OF POLYCARBONATE
 max. overall dimensions 330x248 mm
 distance between holes 155 mm



SIRMAN 19562344

5049229 CARRIAGE PROTECTION OF POLYCARBONATE
 max. overall dimensions 235x152 mm
 distance between holes 93 mm



SIRMAN 19562324.06

5060861 CARRIAGE PROTECTION OF POLYCARBONATE
 max dimensions 280x150 mm
 distance between holes 93 mm



SIRMAN 19562342

9014089 CARRIAGE PROTECTION OF POLYCARBONATE
 max. overall dimensions 230x150 mm
 distance between holes 87 mm
 for Slicer (SIRMAN) AGATA250 - AGATA275 - AGATA300
 AUTOMATICA330CE - GEMMA300CE - GEMMA300INGRCE
 GEMMA300UL - MIRRA275 - MIRRA275CE - MIRRA300
 MIRRA300CE - MIRRA300UL - OPALE300CE
 QUARZO250CE - QUARZO275CE - QUARZO300CE
 for Slicer (SIRMAN) NOUVEAU SAN DANIELE



SIRMAN 19562324



Suitable for:

SIRMAN



9014090 CARRIAGE PROTECTION OF POLYCARBONATE
 max.overall dimensions 175x150 mm
 distance between holes 87 mm
 for Slicer (SIRMAN) MIRRA220CCE - MIRRA220CCEDOM
 MIRRA220CE - MIRRA220CEDOM - MIRRA220UL
 MIRRA250CCE - MIRRA250CCEDOM - MIRRA250CE
 MIRRA250CEDOM - MIRRA250UL - MIRRA275CCE
 MIRRA275CCEDOM - PERLA220CEDOM - TOPAZ220CEDOM
 TOPAZ250CEDOM - TOPAZ275CEDOM
 for Slicer (SIRMAN) PRAGUE



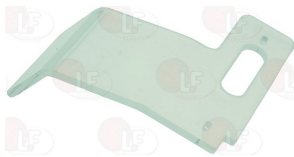
SIRMAN 19562322

9014138 CARRIAGE PROTECTION OF POLYCARBONATE
 max.overall dimensions 300x290 mm
 distance between holes 250 mm
 for Slicer (SIRMAN) AUTOMATICA300CE
 AUTOMATICA350CE - AUTOMATICA370CE - GEMMA300CE
 GEMMA300INGRCE - GEMMA300UL - LEONARDO300VCSCE
 LEONARDO330VCSCE - LEONARDO350VCSCE
 LEONARDO370VCSCE - SELCE350UL - SELCE370UL
 VCS300CE - VCS370CE



SIRMAN 19562336

9716002 CARRIAGE PROTECTION OF POLYCARBONATE
 max.overall dimensions 250x290 mm
 distance between holes 190 mm
 for Slicer (SIRMAN) AGATA330CE - AGATA350
 AGATA350CE - GEMMA330CE - GEMMA330UL
 GEMMA350CE - GEMMA350UL - SELCE350CE
 SELCE370CE - VCS350CE



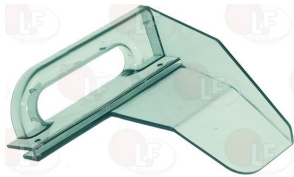
SIRMAN 19562335

9716003 CARRIAGE PROTECTION OF POLYCARBONATE
 max overall dimensions 153x210 mm
 distance between holes 93 mm
 for Slicer (SIRMAN) MIRRA220C - MIRRA220CCE
 MIRRA220CCEDOM - MIRRA220CUL - MIRRA250C
 MIRRA250CCE - MIRRA250CCEDOM - MIRRA250UL
 MIRRA275C - MIRRA275CCE - MIRRA275CCEDOM



SIRMAN 19562322.06

9716004 CARRIAGE PROTECTION OF POLYCARBONATE
 max.overall dimensions 185x190 mm
 distance between holes 148 mm
 for Slicer (SIRMAN) PERLA195 - PERLA195CEDOM
 PERLA220 - PERLA250 - PERLA250CEDOM - TOPAZ195
 TOPAZ195CEDOM - TOPAZ220 - TOPAZ220CEDOM
 TOPAZ250 - TOPAZ275



SIRMAN AMA294A

9716026 CARRIAGE PROTECTION OF POLYCARBONATE
 max.overall dimensions 150x260 mm
 distance between holes 85 mm
 for Slicer (SIRMAN) VCO275CE



SIRMAN 19562332

SIRMAN 19562337

Suitable for:

5032115 LOWER PROTECTION FOR SLICER
ext. sizes 408x130 mm



SIRMAN 19563151

Suitable for:

9716025 POLYCARBONATE HAND GUARD
max. overall dimensions 140x122 mm
distance between holes 33 mm
for Slicer (SIRMAN) AGATA300VCE - AUTOMATICA350CE
AUTOMATICA370CE - LEONARDO300BSCE
LEONARDO330BSCE - LEONARDO350BSCE
LEONARDO350BSSTDCE - LEONARDO370BSCE
LEONARDO370BSSTDCE - LEONARDO385BSCE
LEONARDO385BSSTDCE - VASBS300CE - VASBS350CE
VASBS370CE



SIRMAN 19562376

5053129 SPACER FOD HANDLE \varnothing 14x121 mm
overall length 157 mm
thread M10



SIRMAN 19541509

Ball valves and accessories

9358001 INLET TAP 1/4"
hose end fitting \varnothing 13 mm
for Potato peeler (SIRMAN) PC10CE - PP15EXPOCE
PP4EXPOCE - PP8EXPOCE



SIRMAN RG04012

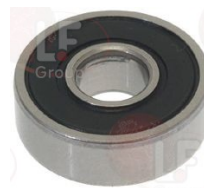
Bearings

5023790 ASSEMBLY BEARING SUPPORT FOR SHAFT
thread 1" with bearing and sealing ring
height 31.5 mm



SIRMAN IB9866003

9063017 BEARING 608 DD1MC3E NSK
external \varnothing 22mm - internal \varnothing 8mm - thickness 7mm
for DYNAMIC MIXER-MINIMIXER-SUPERMIXER-COMBINATI
WHISKS
for Mixer (SIRMAN) CICLONE 150W + A25



SIRMAN IB7306082RS



Suitable for:

5060454 O-RING 02137 SILICONE



SIRMAN IB4104006

SIRMAN



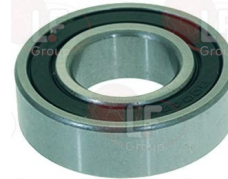
Suitable for:

1063012 BEARING 51105 NSK
external \varnothing 42mm - internal \varnothing 26mm - thickness 11mm
for coffee grinder



SIRMAN LF1132002

9063012 BEARING 6004 DDU NSK
external \varnothing 42mm - internal \varnothing 20mm - thickness 12mm
for Bone bandsaw (SIRMAN) SO2400
for Vegetables/mozzarella cutter (SIRMAN) TM

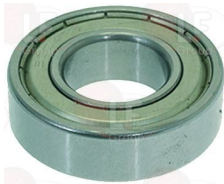


SIRMAN IV73060042RS

SIRMAN LF1110701

SIRMAN 19320235

9063009 BEARING 6004 ZZ NSK
external \varnothing 42 mm - intern. \varnothing 20 mm - thickness 12
for Vegetables/mozzarella cutter (SIRMAN) TM



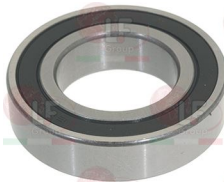
SIRMAN 19320236

9063007 BEARING 6005 DDU NSK
external \varnothing 47mm - internal \varnothing 25mm - thickness 12mm
for OEM KNEADER F201/1-VE201/2
for FIMAR KNEADER IM25-IM38
for FIMAR PLANETARY IP10-IP20
for SIRMAN BONE BAND SAW SO3100
for Bone bandsaw (SIRMAN) SO3100



SIRMAN LF1110801

1063007 BEARING 6006 DDU NSK
external \varnothing 55 mm - intern. \varnothing 30 mm - thickness 13



SIRMAN MF2621

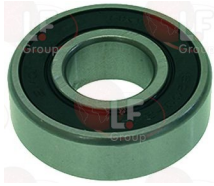
9063017 BEARING 608 DD1MC3E NSK
external \varnothing 22mm - internal \varnothing 8mm - thickness 7mm
for DYNAMIC MIXER-MINIMIXER-SUPERMIXER-COMBINATI
WHISKS
for Mixer (SIRMAN) CICLONE 150W + A25



SIRMAN IB7306082RS

Suitable for:

3063017 BEARING 6203 DDU NSK
external \varnothing 40mm - internal \varnothing 17mm - thickness 12mm
for Bone bandsaw (SIRMAN)



SIRMAN LF1150002

SIRMAN LF1150003

SIRMAN 19320203

Suitable for:

1063906 BEARING 6203 ZZ NSK
external \varnothing 40mm - internal \varnothing 17mm - thickness 12mm
for Grater (SIRMAN)
till 1/01/03 GF
for Meat mincer (SIRMAN)



SIRMAN MF0113

SIRMAN 19320204

D063051 BEARING 6203-2RS SKF
single box packaging



SIRMAN LF1150002

SIRMAN LF1150003

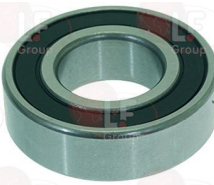
SIRMAN 19320203

D063052 BEARING 6204-2RS SKF
single box packaging



SIRMAN 19320266

9063005 BEARING 6205 DDU NSK
external \varnothing 52mm - internal \varnothing 25mm - thickness 15mm
for Grater (SIRMAN)
since 1/01/03 GF



SIRMAN MF0161

SIRMAN MF2171

9063003 BEARING 6303 DDU NSK
external \varnothing 47mm - internal \varnothing 17mm - thickness 14mm
for Potato peeler (SIRMAN) PPJ10CE - PPJ20CE



SIRMAN IV7300600

5050544 THRUST BEARING 51106 JFK
external \varnothing 47mm - internal \varnothing 30mm - thickness 11mm



SIRMAN LF1143001

5031172 THRUST BEARING 51205 JFK
external \varnothing 47mm - internal \varnothing 25mm - thickness 15mm



SIRMAN LF1139201

5061880 THRUST BEARING 51206
external \varnothing 52 mm - internal \varnothing 30 mm - depth 16 mm



SIRMAN LF1134001



Suitable for:

SIRMAN



Suitable for:

Belts

9720001 BELT MULTIGRIP J 431 H14 5 GOLE

5035200 BELT MULTIGRIP TB2 295 H16 8 GROOVES



SIRMAN RG04248

SIRMAN AMC024

9003754 MULTIGRIP BELT J 431 H24 9 GROOVES
for Potato peeler (SIRMAN) PP4ECOCE - PP4EXPOCE
PP8ECOCE - PP8EXPOCE

9062029 MULTIGRIP BELT J 483 H19 7 GROOVES
for Slicer (SIRMAN) 300V

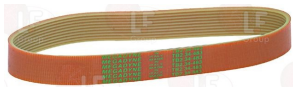


SIRMAN RG08248

SIRMAN

9003756 MULTIGRIP BELT J 483 H21 8 GROOVES
for Vegetables/mozzarella cutter (SIRMAN) TM
TMALL

9062030 MULTIGRIP BELT J 610 H28 11 GROOVES
for Potato peeler (SIRMAN) PPJ10CE - PPJ20CE



SIRMAN IV7000010

SIRMAN IV7000600

9720015 MULTIGRIP BELT J711 H28 11 GROOVES
for Potato peeler (SIRMAN) PP15EXPOCE

9062022 MULTIGRIP BELT TB2 1186 H14 6 GROOVES
for Cutter (SIRMAN) C9 - C9VV



SIRMAN RG15248

SIRMAN MSC09V112

SIRMAN 176120007

9062104 MULTIGRIP BELT TB2 266 H16 7 GROOVES
for Slicer (SIRMAN) 195I

9062038 MULTIGRIP BELT TB2 310 H16 7 GROOVES
for Slicer (SIRMAN) PERLA250 - PERLA250CEDOM
TOPAZ250 - TOPAZ250CEDOM - TOPAZ275
TOPAZ275CEDOM



SIRMAN

SIRMAN AMG024



Suitable for:

9003659 MULTIGRIP BELT TB2 330 H16 7 GROOVES
for Slicer (SIRMAN) CANOVA250CE - CANOVA275CE
CANOVA300CE - MINI250CE



SIRMAN 19310203

9003662 MULTIGRIP BELT TB2 360 H16 7 GROOVES
for Slicer (SIRMAN) AGATA250 - AGATA275 - MIRRA275
MIRRA275CE - MIRRA300 - MIRRA300CE
MIRRA300UL - QUARZO250 - QUARZO250CE
QUARZO250UL - QUARZO275 - QUARZO275CE
QUARZO300 - QUARZO300CE



SIRMAN 19310206

9062037 MULTIGRIP BELT TB2 430 H16 7 GROOVES
for Slicer (SIRMAN) GALILEO350AUTOCE
GALILEO350CE - GALILEO350STDCE - GALILEO370CE
GALILEO370STDCE - GALILEO385CE
GALILEO385STDCE - VAS250CE - VAS275CE
VCO250CE - VCO275CE - 250V - 275V



SIRMAN 19310212

9003669 MULTIGRIP BELT TB2 480 H20 9 GROOVES



SIRMAN

Suitable for:

9003660 MULTIGRIP BELT TB2 345 H16 7 GROOVES
for Slicer (SIRMAN) MIRRA220 - 220C - 220CCE
220CCEDOM - 220CE - 220CEDOM - 220CUL - 220UL
250 - 250C - 250CCE - 250CCEDOM - 250CE
250CEDOM - 250CUL - 250UL - 275C - 275CCE
275CCEDOM



SIRMAN 19310201

9003663 MULTIGRIP BELT TB2 380 H20 9 GROOVES
for Slicer (SIRMAN) AGATA300 - AUTOMATICA300CE
AUTOMATICA330CE - GEMMA300 - GEMMA300CE
GEMMA300UL - GEMMA330 - GEMMA330CE
GEMMA330UL - GEMMA350CE - GEMMA350UL
PALLADIO300CE - PALLADIO330CE - PALLADIO350CE



SIRMAN 19310207

9062051 MULTIGRIP BELT TB2 430 H30 14 GROOVES
for Slicer (SIRMAN)



SIRMAN LF2037058

9062034 MULTIGRIP BELT TB2 480 H22 10 GROOVES
for Slicer (SIRMAN) AUTOMATICA330CE
AUTOMATICA350CE - AUTOMATICA370CE - SELCE350
SELCE350CE - SELCE350UL - SELCE370
SELCE370UL - VASBS300CE - VCO300CE - VCS300CE



SIRMAN 19310209



Suitable for:

9003666 MULTIGRIP BELT TB2 510 H20 9 GROOVES
for Slicer (SIRMAN) AGATA300VCE



SIRMAN 19310214

9003672 MULTIGRIP BELT TB2 630 H18 8 GROOVES
for Cutter (SIRMAN) C4 - C4W - C6 - C6W



SIRMAN MSC04N112

9003673 MULTIGRIP BELT TB2 660 H12 5 GROOVES
for Cutter (SIRMAN) C4 - C4VT - C4W - C6 - C6VT
C6W



SIRMAN MSC04N112A

9003665 MULTIGRIP BELT 430 TB2 H20 9 GROOVES
for Slicer (SIRMAN) AGATA350 - AGATA350CE



SIRMAN IB7003412

SIRMAN 19310264

9003530 V-BELT 8x375 mm T14 3/4
for Slicer (SIRMAN) 350



SIRMAN

SIRMAN



Suitable for:

9062035 MULTIGRIP BELT TB2 526 H20 9 GROOVES
for Slicer (SIRMAN) LEONARDO300BSCE
LEONARDO300VCOCE - LEONARDO300VCSCE
LEONARDO330BSCE - LEONARDO330VCOCE
LEONARDO330VCSCE



SIRMAN 19310252

9062036 MULTIGRIP BELT TB2 630 H24 11 GROOVES
for Slicer (SIRMAN) LEONARDO350BSCE
LEONARDO350BSSTDCE - LEONARDO350BS2CE
LEONARDO350VCSSTDCE - LEONARDO370BSCE
LEONARDO370BSSTDCE - LEONARDO370BS2CE
LEONARDO370VCSSTDCE - LEONARDO385BSCE
LEONARDO385BSSTDCE - VASBS350CE - VASBS370CE
VCS350CE - VCS370CE



SIRMAN 19310215

9062052 MULTIGRIP BELT TB2 725 H16 7 GROOVES
for Slicer (SIRMAN)



SIRMAN LF2037056

9003529 V-BELT 8x355 mm T14
for Slicer (SIRMAN) 350



SIRMAN

9003536 V-BELT 8x475 mm T18 3/4
for Slicer (SIRMAN) 300V



SIRMAN

Suitable for:

Suitable for:

9003541 V-BELT 8x630 mm T24 3/4
for Slicer (SIRMAN) 350V - 370V



SIRMAN

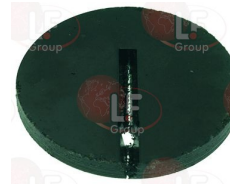
Blade guides

5025013 BLADE GUIDE
dimension 31x15 mm - thickness 15 mm
for Bone bandsaw (SIRMAN) SO1650IXCE - SO2020IXCE
SO2400IXCE - SO3100INOXCE - SO3100IXCE



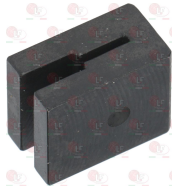
SIRMAN LF2001014

9016047 BLADE GUIDE ø 50 mm SIRMAN
ø external 50 mm
height 6 mm
for Bone bandsaw (SIRMAN) SO1650 - SO1800 - SO1840
SO2020 - SO2400 - SO3100



SIRMAN LF2010006

5028816 INSERT UPPER BLADEGUIDE
dimensions 25x20 mm - thickness 14 mm



SIRMAN LF2001008

Blade protectors for slicers

5063906 BLADE COVER PEARL-TOPAZ 220
external ø 230 mm
internal ø for blade 180 mm
external ø thread 12mm - internal ø thread 6mm



SIRMAN AMC006

5070763 BLADE COVER QUARTZ-MYRRH-VAS 250
external ø 273 mm
internal ø for blade 240 mm
thread external ø 22 mm - thread internal ø 10 mm



SIRMAN 195102026



Suitable for:

SIRMAN



5030501 BLADE COVER SIRMAN LEONARDO-PALLADIO 300
 external \varnothing 254 mm
 thread external \varnothing 25 mm - thread internal \varnothing 12 mm
 for SLICER LEONARDO 300 BS CE
 for SLICER LEONARDO 300 VCS CE
 for SLICER LEONARDO 300 VCO CE
 for SLICER PALLADIO 300 CE
 for SLICER PALLADIO 300 TOP CE
 for SLICER PALLADIO 300 AUT. TOP CE
 for SLICER PALLADIO 300 AUTOMECC CE
 for SLICER PALLADIO 300 TOP UL
 for SLICER MANTEGNA 300 BS CE
 for SLICER MANTEGNA 300 BS TOP UL
 for SLICER MANTEGNA 300 BS TOP CE
 for SLICER MANTEGNA 300 VCS CE
 for SLICER MANTEGNA 300 VCO CE



SIRMAN 195102074

SIRMAN 19510240

5059612 BLADE COVER SIRMAN MIRRA 300
 external \varnothing 315 mm
 internal \varnothing for blade 285 mm
 thread external \varnothing 22 mm - thread internal \varnothing 8 mm



SIRMAN SM500503U

5056175 BLADE COVER SIRMAN MIRRA-CAN.-GIOTTO 300
 external \varnothing 254 mm
 thread external \varnothing 16 mm - thread internal \varnothing 12 mm
 for Slicer (SIRMAN) - Series CANOVA - MIRRA300Y09
 for Slicer (SIRMAN) MIRRA300CE



SIRMAN 19510235

SIRMAN 19510235.10

SIRMAN 19510235+...

SIRMAN 19530930.10

5067154 BLADE COVER SIRMAN MIRRA-CANOVA 250
 external \varnothing 260 mm
 internal \varnothing for blade 200 mm
 external thread \varnothing 6 mm



SIRMAN 195102025.09

5023247 BLADE COVER SIRMAN PEARL-TOPAZ 250
 external \varnothing 260 mm
 internal \varnothing for blade 200 mm
 thread external \varnothing 12 mm - thread internal \varnothing 6 mm

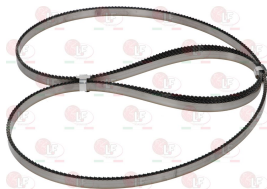


SIRMAN AMG006

SIRMAN 40000010

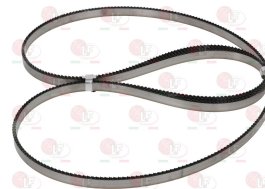
Blades for bone sawers

9016014 BONE BAND SAW DIAMOND BLADE 1650xh16 mm
 6 mm teething distance
 diamond points



SIRMAN LF151650U16

9016028 BONE BAND SAW DIAMOND BLADE 2400xh16 mm
 6 mm teething distance
 diamond points



SIRMAN 28045240



Blades for cutters

9710004 ALUMINIUM BLADE DRUM
 ø shaft 20 mm - ø boss 85 mm
 overall height 340 mm
 for Cutter (SIRMAN) C15 - C15VV



SIRMAN MSC15N104

5077021 BLADES GROUP SMOOTH WITH DRUM
 ø hub 60 mm - overall height 160 mm



SIRMAN MSC06AMON

7100727 BLADES GROUP SMOOTH WITH DRUM
 ø hub 72 mm - overall height 195 mm



SIRMAN

9710021 BOTTOM KNURLED BLADE
 length 150 mm - central hole ø 42 mm
 diagonal distance between mounting holes 58 mm
 for Cutter (SIRMAN) C9 - C9VV



SIRMAN MSC09V072Z

9710023 BOTTOM KNURLED BLADE
 length 120 mm - central hole ø 33 mm
 diagonal distance between mounting holes 46 mm
 for Cutter (SIRMAN) C4 - C4VT - C4VV - C6 - C6VT
 C6VV



SIRMAN MSC04N072Z

9005027 BOTTOM SMOOTH BLADE
 length 123 mm - central hole ø 33 mm
 distance between holes 33 mm
 for Cutter (SIRMAN) C4CE - C4VTCE - C4VVCE - C6CE
 C6VTCE - C6VVCE



SIRMAN MSC04N072

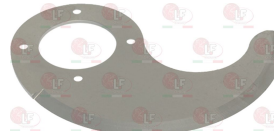
SIRMAN MSC04N075

9710017 BOTTOM SMOOTH BLADE
 length 173 mm - central hole ø 48 mm
 diagonal distance between mounting holes 66 mm
 for Cutter (SIRMAN) C15 - C15BANCO - C15VV



SIRMAN MSC15N072

9710019 BOTTOM SMOOTH BLADE
 length 150 mm - central hole ø 42 mm
 diagonal distance between mounting holes 58 mm
 for Cutter (SIRMAN) C9 - C9VV



SIRMAN MSC09V072



Suitable for:

Suitable for:

9710020 KNURLED TOP BLADE
 length 155 mm - central hole \varnothing 42 mm
 diagonal distance between mounting holes 58 mm
 for Cutter (SIRMAN) C9 - C9VV

9710022 KNURLED TOP BLADE
 length 130 mm - central hole \varnothing 33 mm
 diagonal distance between mounting holes 46 mm
 for Cutter (SIRMAN) C4 - C4VT - C4VV - C6 - C6VT
 C6VV



SIRMAN MSC09V064Z

SIRMAN MSC04N064Z

9710009 PTFE BLADE SPACER
 external \varnothing 84 mm - internal \varnothing 38 mm
 height 27 mm
 for Cutter (SIRMAN) C15 - C15BANCO - C15VV

9710011 PTFE BLADE SPACER
 external \varnothing 72 mm - internal \varnothing 38 mm
 height 24 mm
 for Cutter (SIRMAN) C9 - C9VV



SIRMAN MSC15N068

SIRMAN MSC09V068

9710013 PTFE BLADE SPACER
 external \varnothing 60 mm - internal \varnothing 30 mm
 height 20 mm
 for Cutter (SIRMAN) C6 - C6VT - C6VV

9710015 PTFE BLADE SPACER
 external \varnothing 60 mm - internal \varnothing 30 mm
 height 14 mm
 for Cutter (SIRMAN) C4 - C4VT - C4VV

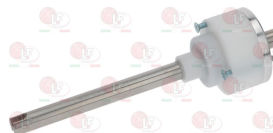


SIRMAN MSC06N068

SIRMAN MSC04N068

9710005 PTFE DRUM FOR BLADE
 shaft \varnothing 20 mm - hub \varnothing 85 mm
 overall height 295 mm
 for Cutter (SIRMAN) C9 - C9VV

9710006 PTFE DRUM FOR BLADE
 shaft \varnothing 15 mm - boss \varnothing 65 mm
 overall height 235 mm
 for Cutter (SIRMAN) C6 - C6VT - C6VV

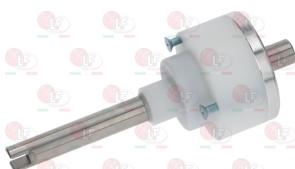


SIRMAN MSC09V104

SIRMAN MSC06N104

9710007 PTFE DRUM FOR BLADE
 shaft \varnothing 15 mm - boss \varnothing 65 mm
 overall height 170 mm
 for Cutter (SIRMAN) C4 - C4VT - C4VV

9710008 PTFE SUPPORT FOR BLADE HOLDER
 overall height 190 mm - external \varnothing 84 mm
 for Cutter (SIRMAN) C15 - C15BANCO - C15VV



SIRMAN MSC04N104

SIRMAN MSC15N062

Suitable for:

9710010 PTFE SUPPORT FOR BLADE HOLDER
overall height 165 mm - external \varnothing 72 mm
for Cutter (SIRMAN) C9 - C9VV



SIRMAN MSC09V062

Suitable for:

9710012 PTFE SUPPORT FOR BLADE HOLDER
overall height 135 mm - external \varnothing 60 mm
for Cutter (SIRMAN) C6 - C6VT - C6VV



SIRMAN MSC06N062

5052198 SPACER FOR KNIVES
external \varnothing 60 mm - hole \varnothing 30 mm - height 22 mm



SIRMAN MSC06N068P

9005026 TOP SMOOTH BLADE
length 126 mm - central hole \varnothing 33 mm
distance between holes 33 mm
for Cutter (SIRMAN) C4CE - C4VTCE - C4VVCE - C6CE
C6VTCE - C6VVCE



SIRMAN MSC04N064

9710016 TOP SMOOTH BLADE
length 180 mm - central hole \varnothing 48 mm
diagonal distance between mounting holes 66 mm
for Cutter (SIRMAN) C15 - C15BANCO - C15VV



SIRMAN MSC15N064

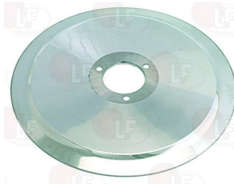
9710018 TOP SMOOTH BLADE
length 155 mm - central hole \varnothing 42 mm
diagonal distance between mounting holes 58 mm
for Cutter (SIRMAN) C9 - C9VV



SIRMAN MSC09V064

Blades for meat slicer

9006515 BLADE OF ST./STEEL \varnothing 250-40-3-210 MOD.C
B = external \varnothing 250 mm
D = central hole \varnothing 40 mm
C = blade inner \varnothing 210 mm
height 17.5 mm
fastening screws n.3
forged stainless steel 100CR6



SIRMAN 18250403210

9006559 BLADE 300-57-4-254 MOD.C W/EXTRACT.HOLES
B = external \varnothing 300 mm
D = central hole \varnothing 57 mm
C = blade internal \varnothing 254 mm
4 fastening screws
with extraction holes
100CR6 forged stainless steel



SIRMAN



Suitable for:

SIRMAN



9006560 BLADE 330-57-4-270 MOD.C W/EXTRACT.HOLES

B = external \varnothing 330 mm
D = central hole \varnothing 57 mm
C = blade internal \varnothing 270 mm
4 fastening screws
with extraction holes
100CR6 forged stainless steel

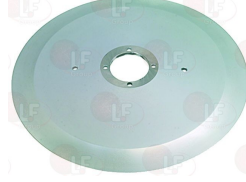


SIRMAN

Suitable for:

9006539 BLADE 350-57-4-280 MOD.C W/EXTRACT.HOLES

B = external \varnothing 350 mm
D = central hole \varnothing 57 mm
C = blade internal \varnothing 280 mm
4 fastening screws
with extraction holes
100CR6 forged stainless steel



SIRMAN 18350574280F

9006562 BLADE 370-57-4-300 MOD.C W/EXTRACT.HOLES

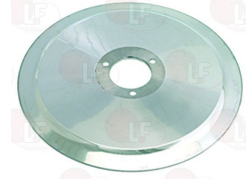
B = external \varnothing 370 mm
D = central hole \varnothing 57 mm
C = blade internal \varnothing 300 mm
4 fastening screws
with extraction holes
100CR6 forged stainless steel



SIRMAN 18370574300GF

9006508 ST. STEEL BLADE \varnothing 195-30-3-155 MOD.C

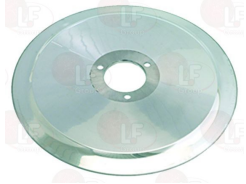
B = external \varnothing 195 mm
D = central hole \varnothing 30 mm
C = blade internal \varnothing 155 mm
3 fastening screws
100CR6 forged stainless steel



SIRMAN 18195303155

9006510 ST. STEEL BLADE \varnothing 220-40-3-180 MOD.C

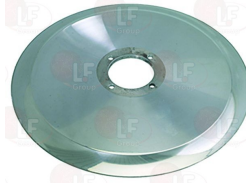
B = external \varnothing 220 mm
D = central hole \varnothing 40 mm
C = blade internal \varnothing 180 mm
3 fastening screws
100CR6 forged stainless steel



SIRMAN

9006520 ST. STEEL BLADE \varnothing 275-40-4-218 MOD.C

B = external \varnothing 275 mm
D = central hole \varnothing 40 mm
C = blade internal \varnothing 218 mm
4 fastening screws
100CR6 forged stainless steel



SIRMAN

9006525 ST. STEEL BLADE \varnothing 300-40-3-254 MOD.C

B = external \varnothing 300 mm
D = central hole \varnothing 40 mm
C = blade internal \varnothing 254 mm
3 fastening screws
100CR6 forged stainless steel



SIRMAN 18300403254

9006528 ST. STEEL BLADE \varnothing 300-57-4-254 MOD.C

B = external \varnothing 300 mm
D = central hole \varnothing 57 mm
C = blade internal \varnothing 254 mm
4 fastening screws
100CR6 forged stainless steel

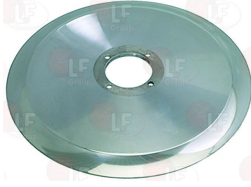


SIRMAN

Suitable for:

9006535 ST. STEEL BLADE ø 330-57-4-270 MOD.C

B = external ø 330 mm
 D = central hole ø 57 mm
 C = blade internal ø 270 mm
 4 fastening screws
 100CR6 forged stainless steel

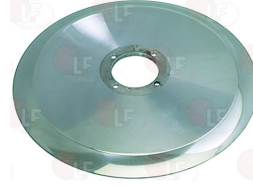


SIRMAN

Suitable for:

9006545 ST. STEEL BLADE ø 370-57-4-300 MOD.C

B = external ø 370 mm
 D = central hole ø 57 mm
 C = blade internal ø 300 mm
 4 fastening screws
 100CR6 forged stainless steel



SIRMAN

Bodies

5030693 *****



SIRMAN MF2191

5024544 COVER FOR BELL WHITE COMPLETE

external dimensions ø 188x245 mm
 distance between holes 95 mm
 for Vegetables/mozzarella cutter (SIRMAN) ATHOS



SIRMAN IB4023000A

SIRMAN IV9840530B

5051271 COVER FOR BELL WHITE COMPLETE

external dimensions ø 188x245 mm
 distance between holes 50 mm



SIRMAN IB4023000

SIRMAN IV4023000

Bushings

5075644 BUSHING ø 26/20x22 mm



SIRMAN CINP7-50405005

9002551 GLACIER BUSH ø 14-12x15 mm

external ø 14 mm
 internal ø 12 mm
 height 15 mm



SIRMAN 19324102



Suitable for:

9704001 **GLACIER BUSH \varnothing 20-18x20 mm**
external \varnothing 20 mm
internal \varnothing 18 mm
height 20 mm



SIRMAN 19324108

Suitable for:

9002562 **GLACIER BUSH \varnothing 25-22x20 mm**
external \varnothing 25 mm
internal \varnothing 22 mm
height 20 mm



SIRMAN 19324008

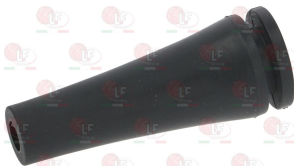
5063035 **KIT GLACER \varnothing 25-22x30 mm - 5 PCS**
external \varnothing 25 mm
internal \varnothing 22 mm
height 30 mm



SIRMAN 19324106

Cable glands

5065734 **GROMMET RUBBERPIECE 60 mm**
internal \varnothing 7 mm



SIRMAN IB5894000

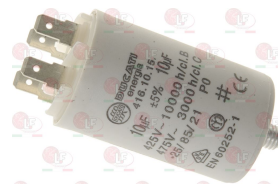
Capacitors, electrical

3068014 **CAPACITOR DUCATI μ F 8 450V 50/60Hz**
operating temperature $-25+85^{\circ}\text{C}$
in compliance with EEC 93/68 and 92/31 regulations



SIRMAN 19410301

3068016 **CAPACITOR DUCATI 10μ F 450V 50/60Hz**
operating temperature $-25+85^{\circ}\text{C}$
in compliance with EEC 93/68 and 92/31 regulations



SIRMAN 19410307

3068027 **CAPACITOR DUCATI 20μ F 450V 50/60Hz**
operating temperature $-25+85^{\circ}\text{C}$
in compliance with EEC 93/68 and 92/31 regulations



SIRMAN IV5820020

3068080 **CAPACITOR ELECTRICAL 10μ F**
450V 50/60Hz - \varnothing 30xh71 mm



SIRMAN 19410307

Suitable for:

3068084 CAPACITOR ELECTRICAL 20 μ F
450V 50/60Hz - \varnothing 40xh71 mm



SIRMAN IV5820020

Suitable for:

3068079 CAPACITOR ELECTRICAL 8 μ F
450V 50/60Hz - \varnothing 30xh71 mm



SIRMAN 19410301

3068112 CAPACITOR WITH CABLE 25 μ F
450V 50/60Hz - \varnothing 45xh71 mm - cables L=200 mm



SIRMAN RG08290

Caps

5020797 LEVER CAP \varnothing 20/18x13 mm
for Vegetables/mozzarella cutter (SIRMAN)
TMCOPALLCE - TMCOPINOXCE



SIRMAN IV4220000

5027097 OIL CAP OF RUBBER \varnothing 14/12x12 mm



SIRMAN MF2112

Circlips

5015337 SEEGER RING E-20
of stainless steel for springs C60
 \varnothing internal 18.5 mm - thickness 1.2 mm
UNI 7435 - DIN 471
for Vegetables/mozzarella cutter (SIRMAN) TMALL



SIRMAN IV77SE20

5021354 SEEGER RING J-40
of zinc-iron alloy - \varnothing external 43.5 mm
UNI 7437 - DIN 472
for conveyor shaft



SIRMAN MF2108

Couplings

5059690 COUPLING M 4 TEETH
external \varnothing 14 mm - overall height 36 mm



SIRMAN IB4004048

5009462 FEMALE COUPLING
external \varnothing 24 mm - overall height 45 mm
for Mixer (SIRMAN) VORTEX



SIRMAN IB4004045.04



Suitable for:

SIRMAN



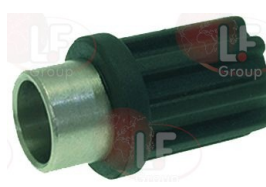
5026585 FEMALE SNAP-IN COUPLER 8 TEETH
external \varnothing 25 mm - overall height 35 mm
for Mixer (SIRMAN) VORTEX



SIRMAN IB4004045

Suitable for:

5009461 MALE COUPLING 8 TEETH
external \varnothing 17 mm - overall height 36 mm
for Mixer (SIRMAN) VORTEX43CE - VORTEX55CE
VORTEX75CE



SIRMAN IB4004043

SIRMAN IB4004043.04

Doors

9386006 POTATO PEELER OUTLET DOOR
for Potato peeler (SIRMAN) PP4ECOCE - PP8ECOCE



SIRMAN RG04136

9386007 POTATO PEELER OUTLET DOOR
for Potato peeler (SIRMAN) PP15EXPOCE - PP8EXPOCE



SIRMAN RG08050

Eccentrics

5074329 ECCENTRIC SIRMAN OF PLASTIC \varnothing 90 mm
middle hole \varnothing 18 mm - groove 8 mm
with external stopping notch



SIRMAN 19563560LV

9707002 PLASTIC ECCENTRIC SIRMAN \varnothing 101 mm
internal hole \varnothing 18 mm - groove 12 mm
with external stopping notch
for Slicer (SIRMAN) LEONARDO350BSCE
LEONARDO350BSSTDCE - LEONARDO350BS2CE
LEONARDO350VCSTDCE - LEONARDO370BSCE
LEONARDO370BSSTDCE - LEONARDO370BS2CE
LEONARDO370VCSTDCE - LEONARDO385BSCE
LEONARDO385BSSTDCE



SIRMAN 19563554LV

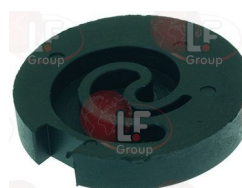
SIRMAN 19563574

9005013 PLASTIC ECCENTRIC SIRMAN \varnothing 38 mm
internal hole \varnothing 12 mm - groove 6 mm
for Slicer (SIRMAN) TOPAZ195 - TOPAZ195CEDOM
TOPAZ220 - TOPAZ220AI - TOPAZ220CEDOM
TOPAZ250 - TOPAZ250AICEDOM - TOPAZ250AIUL
TOPAZ250CCEDOM - TOPAZ250CEDOM - TOPAZ250UL
TOPAZ275 - TOPAZ275CEDOM



SIRMAN AMA092

9707004 PLASTIC ECCENTRIC SIRMAN \varnothing 56 mm
internal hole \varnothing 12 mm - groove 6.5 mm
with external stopping notch
FOR THE EUROPEAN MARKET
for Slicer (SIRMAN) MINI250CE - MIRRA220
MIRRA220C - MIRRA220CCE - MIRRA220CCEDOM
MIRRA220CE - MIRRA220CEDOM - MIRRA220CUL
MIRRA220UL - MIRRA250 - MIRRA250C
MIRRA250CCE - MIRRA250CCEDOM - MIRRA250CE
MIRRA250CEDOM - MIRRA250CUL - MIRRA250UL
MIRRA275C - MIRRA275CCE - MIRRA275CCEDOM



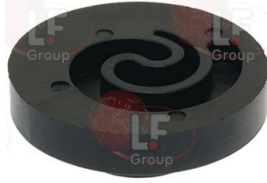
SIRMAN SM190100011
SIRMAN 19563505N

SIRMAN 19563503

SIRMAN 19563505LG

Suitable for:

9707006 PLASTIC ECCENTRIC SIRMAN \varnothing 56 mm
 internal hole \varnothing 12 mm - groove 6.5 mm
 FOR THE AMERICAN AND EXTRA-EUROPEAN MARKETS
 for Slicer (SIRMAN) MIRRA275 - MIRRA275CE
 MIRRA300 - MIRRA300CE - MIRRA300UL - SELCE350
 SELCE350UL - SELCE370 - SELCE370UL - VAS275CE



SIRMAN SM190100011

SIRMAN SM1901001

SIRMAN 19563503

Suitable for:

9005028 PLASTIC ECCENTRIC SIRMAN \varnothing 82 mm
 internal hole \varnothing 18 mm - groove 8 mm
 for Slicer (SIRMAN) AGATA250 - AGATA275 - AGATA300
 AGATA300V - AGATA330CE - AGATA350 - AGATA350CE



SIRMAN AVA092

9707001 PLASTIC ECCENTRIC SIRMAN \varnothing 85 mm
 internal hole \varnothing 18 mm - groove 8 mm
 with external stopping notch
 for Slicer (SIRMAN) AUTOMATICA300CE
 AUTOMATICA330CE - GEMMA300 - GEMMA300CE
 GEMMA300UL - GEMMA330 - GEMMA330CE
 GEMMA330UL



SIRMAN 19563510

9707005 PLASTIC ECCENTRIC SIRMAN \varnothing 85 mm
 internal hole \varnothing 18 mm - groove 8 mm
 with external stopping notch
 for Slicer (SIRMAN) AUTOMATICA350CE - QUARZO250
 QUARZO250UL - QUARZO275 - QUARZO300
 SELCE350CE - SELCE370CE



SIRMAN SM19010001

SIRMAN SM19010002

SIRMAN 19563512

9707003 PLASTIC ECCENTRIC SIRMAN \varnothing 86 mm
 internal hole \varnothing 18 mm - groove 8 mm
 with external stopping notch
 for Slicer (SIRMAN) LEONARDO300BSCE
 LEONARDO300VCOCE - LEONARDO300VCSCCE
 LEONARDO330BSCE - LEONARDO330VCOCE
 LEONARDO330VCSCCE



SIRMAN 19563552

SIRMAN 19563552LV

Electrical cables

5072547 POWER SUPPLY CABLE 2x1 mm²
 with plug SCHUKO - overall length 3000 mm



SIRMAN IB5504000



Suitable for:

SIRMAN



Suitable for:

Electronic printed-circuit boards

5028271 CUT REVERSING BOARD 152x80 mm
 for Kneader (SIRMAN) IP120B - IP120B/ACE - IP120M
 IP18B/ACE - IP25M - IP30M - IP50B - IP50B/ACE
 IP50M - IP80B/ACE
 for Meat mincer (SIRMAN) MASTER1000CE - MASTER30CE
 MASTER90 - TCG12MAGNUMCE - TCG22DALLAS
 TCG32DALLASCE - TC12 - TC22 - TC32 - TC42



SIRMAN LF1033010

SIRMAN LF1033020

SIRMAN 29411002

9014029 ELECTR.CIRCUIT BOARD F/KIT 230/400V 5HP
 external dimensions 100x80 mm
 power supply 230/400V 50/60Hz
 for ALTERING KIT 9014021-9721000-9721004
 for Grater (SIRMAN)
 since 1/01/04 GFCE - GF2CE
 for Meat mincer (SIRMAN)
 since 1/01/04 TCG12ECE - TCG22ECE - TC12ECE
 TC22ECE
 for Potato peeler (SIRMAN) PPJ10CE - PPJ20CE



SIRMAN IV5940604

SIRMAN MF2141

9390034 ELECTR.CIRCUIT BOARD 230/400V 105x100 mm
 for Potato peeler (SIRMAN) PP15EXPOCE - PP4EXPOCE
 PP8EXPOCE



SIRMAN RG04232

5075651 ELECTRONIC BOARD FOR SEALER
 dimensions 53x50 mm



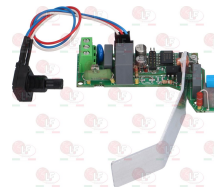
SIRMAN HN0000015

5054897 ELECTRONIC BOARD KIT
 with cables and potentiometer
 plate external dimensions 66x37 mm



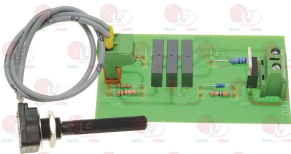
SIRMAN IB5944014

5031852 ELECTRONIC BOARD 230V
 with potentiometer



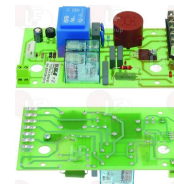
SIRMAN IB5944010

9014085 ELECTRONIC CIRCUIT BOARD KIT 85x40 mm
 complete with cable and controller
 for Cutter (SIRMAN) C4VVCE - C6VVCE



SIRMAN MSC04V256

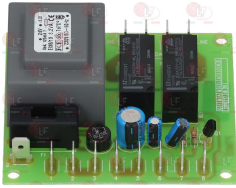
9390050 MOTHERBOARD 135x75 mm
 for Cutter (SIRMAN) C4CE - C4VVCE - C6CE - C6VVCE



SIRMAN 19413007

Suitable for:

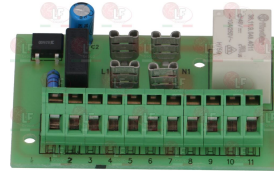
5011613 MOTHERBOARD 24/230V
external dimensions 82x74 mm



SIRMAN MF2140

Suitable for:

5068021 MOTHERBOARD 69x47 mm



SIRMAN MF2389

9390032 POWER CIRCUIT BOARD 230/400V 127x42 mm
for Slicer (SIRMAN) AGATA330CE - AGATA350CE
AUTOMATICA300CE - AUTOMATICA330CE
AUTOMATICA350CE - AUTOMATICA370CE
CANOVA250CE - CANOVA275CE - CANOVA300CE
GALILEO350CE - GALILEO350INGRCE
GALILEO350STDCE - GALILEO370CE
GALILEO370INGRCE - GALILEO370STDCE
GALILEO385CE - GALILEO385INGRCE
GALILEO385STDCE - GEMMA300CE - GEMMA300INGRCE
GEMMA330CE - GEMMA350CE - LEONARDO300BSCE
LEONARDO300VCOCE - LEONARDO300VCSCCE
LEONARDO330BSCE - LEONARDO330VCOCE
LEONARDO330VCSCCE - LEONARDO350BSCE
LEONARDO350BSSTDCE - LEONARDO350BS2CE
LEONARDO350VCSTDCE - LEONARDO370BSCE



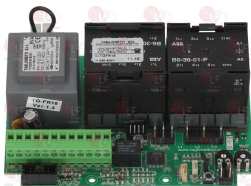
SIRMAN 19411000.06

5072884 REVERSING BOARD 230/400V 150x94 mm



SIRMAN LF1033031

5068018 SELF-BRAK. PC BOARD 230/400V 145x106 mm



SIRMAN LF1010034

9390011 SELF-BRAKING ELECTRONIC CIRCUIT BOARD
external dimensions 130x105 mm
for Bone bandsaw (SIRMAN) S01650 - S01800 - S01840
S02020 - S02400



SIRMAN LF1010025

SIRMAN LF1050102



Suitable for:

9014179 SELF-BRAKING PC BOARD 230/400V 3,5HP
external dimensions 147x107 mm



SIRMAN LF1010030

Suitable for:

9014084 SINGLE-PHASE PC BOARD 220V 50/60Hz
external dimensions 128x40 mm
for Cutter (SIRMAN) C15 - C4 - C4VV - C6 - C6VV - C9
for Potato peeler (SIRMAN) PP4ECOCE - PP8ECOCE
for Slicer (SIRMAN) AGATA250 - AGATA275 - AGATA300
AGATA300V - AGATA330 - AGATA350
AUTOMATICA300CE - AUTOMATICA330CE
AUTOMATICA350CE - AUTOMATICA370CE - GEMMA300CE
GEMMA300INGRCE - GEMMA330CE - GEMMA350CE
MAINZ250CE - MINI250CE - MIRRA220CCE
MIRRA220CE - MIRRA250CCE - MIRRA250CE
MIRRA275CCE - MIRRA275CE - MIRRA300CE
OPALE300CE - QUARZO250 - QUARZO275 - QUARZO300
SELCE350CE - SELCE370CE - VASBS300CE
VASBS350CE - VASBS370CE - VAS250CE - VAS275CE



SIRMAN IV5810002

SIRMAN 19411007

9014079 3-PHASE ELECTRON.CIRCUIT BOARD 220/380V
external dimensions 130x44 mm
for Cutter (SIRMAN) C15 - C4 - C4VV - C6 - C6VV - C9
for Potato peeler (SIRMAN) PP4ECOCE - PP8ECOCE
for Slicer (SIRMAN) AGATA250CE - AGATA275CE
AGATA300CE - AGATA300VCE - AGATA330CE
AGATA350CE - AUTOMATICA300CE - AUTOMATICA330CE
AUTOMATICA350CE - AUTOMATICA370CE - GEMMA300CE
GEMMA300INGRCE - GEMMA330CE - GEMMA350CE
MAINZ250CE - MINI250CE - MIRRA220CCE
MIRRA220CE - MIRRA250CCE - MIRRA250CE
MIRRA275CCE - MIRRA275CE - MIRRA300CE
OPALE300CE - QUARZO250CE - QUARZO275CE
QUARZO300CE - SELCE350CE - SELCE370CE
VASBS300CE - VASBS350CE - VASBS370CE



SIRMAN 19411008

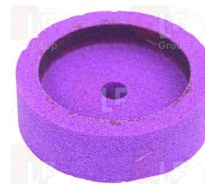
Emeries for blades

9013008 CUP GRINDERS 45-6-10
A = external \varnothing 45 mm
B = hole \varnothing 6 mm
H = height 10 mm
COARSE GRAIN
for Slicer (SIRMAN) AUTOMATICA300 - GEMMA



SIRMAN

9013006 CUP GRINDERS 45-6-15
A = external \varnothing 45 mm
B = hole \varnothing 6 mm
H = height 15 mm
COARSE GRAIN
for Slicer (SIRMAN) GEMMA300



SIRMAN



Suitable for:

Suitable for:

9013011 CUP GRINDERS 48-8-15

A = external \varnothing 48 mm
B = hole \varnothing 8 mm
H = height 15 mm
COARSE GRAIN



SIRMAN 19300108C.10

5051635 SAND PIN 96 mm



SIRMAN 19540709

9013220 EMERY WHEEL WITH STEP AND DRUM 50-8-8

A = external \varnothing 50 mm
B = hole \varnothing 8 mm
H = height 8 mm
COARSE GRAIN
for Slicer (SIRMAN) GEMMA330 - GEMMA350 - SELCE350
SELCE370 - VASBS350 - VASBS370 - VCS350
VCS370



SIRMAN 19300108

SIRMAN 19300208

9731005 RIMMED GRINDER 43-6-8

A = external \varnothing 43 mm
B = hole \varnothing 6 mm
H = height 8 mm
COARSE GRAIN



SIRMAN 19300107N

9013209 RIMMED GRINDERS WITH DRUM 45-6-8

A = external \varnothing 45 mm
B = hole \varnothing 6 mm
H = height 8 mm
FINE GRAIN



SIRMAN

9013210 RIMMED GRINDERS WITH DRUM 45-6-8

A = external \varnothing 45 mm
B = hole \varnothing 6 mm
H = height 8 mm
COARSE GRAIN



SIRMAN AMP416

SIRMAN AVA470

9013213 RIMMED GRINDERS WITH DRUM 50-6-8

A = external \varnothing 50 mm
B = hole \varnothing 6 mm
H = height 8 mm
FINE GRAIN



SIRMAN AVG416

9013219 RIMMED GRINDERS WITH DRUM 50-8-8

A = external \varnothing 50 mm
B = hole \varnothing 8 mm
H = height 8 mm
FINE GRAIN



SIRMAN



Suitable for:

SIRMAN

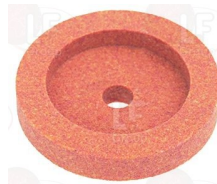


9013100 RIMMED GRINDERS 40-6-10
 A = external \varnothing 40 mm
 B = hole \varnothing 6 mm
 H = height 10 mm
 FINE GRAIN
 for Slicer (SIRMAN) CANOVA300CE



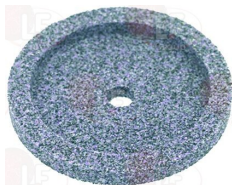
SIRMAN 19300101

9013101 RIMMED GRINDERS 40-6-7.8
 A = external \varnothing 40 mm
 B = hole \varnothing 6 mm
 H = height 7.8 mm
 FINE GRAIN



SIRMAN 19300201

9013128 RIMMED GRINDERS 50-6-9
 A = external \varnothing 50 mm
 B = hole \varnothing 6 mm
 H = height 9 mm
 COARSE GRAIN



SIRMAN AVG470

9013135 RIMMED GRINDERS 50-8-8
 A = external \varnothing 50 mm
 B = hole \varnothing 8 mm
 H = height 8 mm
 FINE GRAIN



SIRMAN 19300209

9013110 STEPPED EMERY WHEEL 43-8-10
 A = external \varnothing 43 mm
 B = hole \varnothing 8 mm
 H = height 10 mm
 FINE GRAIN
 for Slicer (SIRMAN) VASBS300CE



SIRMAN

9013148 STEPPED EMERY WHEEL 45-6-10
 A = \varnothing external \varnothing 45 mm
 B = \varnothing hole \varnothing 6 mm
 H = height 10 mm
 FINE GRAIN
 for Slicer (SIRMAN) AUTOMATICA300 - GEMMA300
 GEMMA300CE - QUARZO250 - QUARZO275 - QUARZO300
 VAS250CE - VAS275 - VCO250CE - VCO275CE
 VCO300CE - VCS300CE



SIRMAN 19300107

SIRMAN 19300207

9013113 STEPPED EMERY WHEEL 45-6-9
 A = external \varnothing 45 mm
 B = hole \varnothing 6 mm
 H = height 9 mm
 COARSE GRAIN
 for Slicer (SIRMAN) AUTOMATICA300CE - QUARZO250
 QUARZO250CE - QUARZO275 - QUARZO275CE
 QUARZO300 - QUARZO300CE



SIRMAN AVA416

SIRMAN 19300107C

9013108 STEPPED GRINDERS 43-6-8
 A = external \varnothing 43 mm
 B = hole \varnothing 6 mm
 H = height 8 mm
 FINE GRAIN



SIRMAN SM260102



Feet

5024889 *****
perno \varnothing 8x17 mm
base \varnothing 19x6 mm



SIRMAN MF2031

9012015 **SUCTION FOOT WITH SHAFT M5**
length 10 mm
base \varnothing 35x26 mm



SIRMAN MSC04N114

SIRMAN 19560201

9012016 **SUCTION FOOT WITH SHAFT M6**
length 9 mm
base \varnothing 47x42 mm
for Slicer (SIRMAN) MAINZ



SIRMAN 19560203

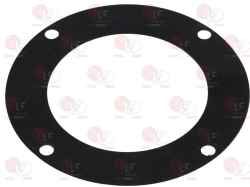
9012017 **SUCTION FOOT WITH SHAFT M8**
length 15 mm
base \varnothing 47x42 mm



SIRMAN 19560202

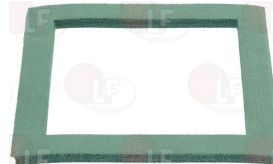
Gaskets and seals

5026834 *****
 \varnothing esterno 132 mm - \varnothing interno 87 mm
interasse fori di fissaggio 120 mm
spessore 1 mm



SIRMAN MF2206

9186008 **DOOR GASKET**
external dimensions 170x150 mm
internal dimensions 130x115 mm
for Potato peeler (SIRMAN) PLP10 - PLP20 - PPJ10CE
PPJ20CE



SIRMAN IV4130605

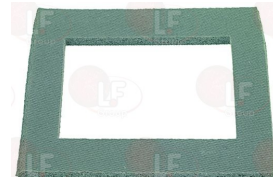
SIRMAN IV4130610

9720710 **DOOR GASKET**
external dimensions 145x120 mm
internal dimensions 103x73 mm
for Potato peeler (SIRMAN) PP4ECOCE - PP4EXPOCE
PP8ECOCE



SIRMAN RG04154

9720711 **DOOR GASKET**
external dimensions 170x140 mm
internal dimensions 120x92 mm
for Potato peeler (SIRMAN) PP15EXPOCE - PP8EXPOCE



SIRMAN RG08052

SIRMAN RG15052



Suitable for:

9786002 GASKET FOR BIG PUSH-BUTTON PANEL
 external dimensions 153x60 mm
 for Cutter (SIRMAN) C9VVCE
 for Slicer (SIRMAN) AUTOMATICA300CE
 AUTOMATICA330CE - AUTOMATICA350CE
 AUTOMATICA370CE - GEMMA300CE - GEMMA330CE
 GEMMA350CE - PERLA19SCEDOM - SELCE350CE
 SELCE370CE - VASBS300CE - VASBS350CE
 VASBS370CE - VCO300CE - VCS300CE - VCS350CE
 VCS370CE



SIRMAN 19563032

Suitable for:

5038052 GASKET FOR BUFFER VALVE \varnothing 31 mm
 height 40 mm



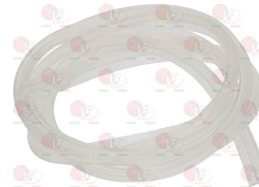
SIRMAN LF2011012

5035179 GASKET FOR DRUM
 external \varnothing 61 mm - internal \varnothing 55 mm
 thickness 3.7 mm
 for Mussel cleaner (SIRMAN) LCJ10CE
 for Potato peeler (SIRMAN) PPJ10CE - PPJ10SCCE
 PPJ102VCE - PPJ20CE - PPJ20SCCE



SIRMAN IV4100610

5064953 GASKET FOR LID 1500 mm
 section 10x7 mm



SIRMAN IW1471230010

5059119 GASKET FOR LID 1800 mm
 section 10x7 mm
 for Vacuum packer (SIRMAN) W840 EASY BX
 W840 EASY BX P20



SIRMAN IW1471240010

5067936 GASKET FOR LID 2150 mm
 section 10x7 mm



SIRMAN IW1471250010

Suitable for:

9786001 GASKET FOR OVAL PUSH-BUTTON PANEL
 external dimensions 132x45 mm
 for Cutter (SIRMAN) C15 - C4 - C4VV - C6 - C6VV
 C9
 for Potato peeler (SIRMAN) PP4ECOCE - PP8ECOCE
 for Slicer (SIRMAN) AGATA275CE - AGATA300CE
 AGATA300VCE - AGATA330CE - AGATA350CE
 AUTOMATICA300CE - AUTOMATICA330CE
 AUTOMATICA350CE - AUTOMATICA370CE - GEMMA300CE
 GEMMA300INGRCE - GEMMA330CE - GEMMA350CE
 MAINZ250CE - MINI250CE - MIRRA220CCE
 MIRRA220CE - MIRRA250CCE - MIRRA250CE
 MIRRA275CCE - MIRRA275CE - MIRRA300CE
 OPALE300CE - QUARZO250CE - QUARZO275CE
 QUARZO300CE - SELCE350CE - SELCE370CE
 VASBS300CE - VASBS350CE - VASBS370CE

Suitable for:

3786487 GASKET FOR SMALL PUSH-BUTTON PANEL
 external dimensions 122x52 mm
 for Cutter (SIRMAN) C4CE
 for Slicer (SIRMAN) AGATA250CE - AGATA275CE
 AGATA300CE - AGATA300VCE - AGATA330CE
 AGATA350CE - MAINZ250CE - MINI250CE
 MINI250VCE - MIRRAVBS250CE - MIRRAVBS275CCE
 MIRRAVBS275CE - MIRRAVBS300 - MIRRAV220CE
 MIRRAV250E - MIRRAV275E - MIRRA220CCE
 MIRRA220CE - MIRRA250CCE - MIRRA250CE
 MIRRA275CE - MIRRA300CE - OPALE300CE
 PERLA195CEDOM - QUARZO250CE - QUARZO275CE
 QUARZO300CE - VAS250CE - VAS275CE - VCO250CE
 VCO275CE
 for Vegetables/mozzarella cutter (SIRMAN)
 TMCOPALLCE - TMCOPINOXCE



SIRMAN 19563034



SIRMAN 19563030

Gastronorm pans

5022997 TANK WITH MAGNET GN 1/3
 dimensions 320x170xh195 mm



SIRMAN 40750080

Gears

5027096 *****
 overall length 45 mm
 external \varnothing 15 mm - thread \varnothing 16 mm



SIRMAN MF2102

5030529 *****
 \varnothing esterno ingranaggio grande 98 mm
 numero denti 60
 \varnothing esterno ingranaggio piccolo 35 mm
 numero denti 20



SIRMAN MF0537

SIRMAN MF0537+MF0538

SIRMAN MF0538

5023748 ALBERO TRASCINATORE FAMA-SIRMAN
 \varnothing esterno 35/30/20/16 mm - lunghezza totale 115 mm



SIRMAN MF2183

9014054 BIG GEAR \varnothing 64 mm
 internal \varnothing 16 mm - number of teeth 40



SIRMAN MF2107



Suitable for:

SIRMAN



9212069 BOSS-TO-BOSS GEAR KI
ø internal 26 mm



SIRMAN PR5G010005

Suitable for:

9014052 BRONZE GEAR ø 34 mm
internal ø 15 mm - number of teeth 19



SIRMAN MF2020

5047710 CENTRAL GEAR ø 30 mm
ø internal 12 mm - number of teeth 18
for Planetary machine (SIRMAN) PLUTONE 7CE



SIRMAN CINP01-24

SIRMAN CINP7-09-02

SIRMAN CINP7-40101200

5025345 CONVEYOR SHAFT FOR PLATE COMPLETE
shaft 28x14 mm
with gaskets and bearings



SIRMAN RG08270

9240037 POTATO PEELER DISK DRIVE PIN
pin 28x14 mm - overall height 100 mm
for Potato peeler (SIRMAN) PP15EXPOCE - PP4ECOCE
PP4EXPOCE - PP8ECOCE - PP8EXPOCE



SIRMAN

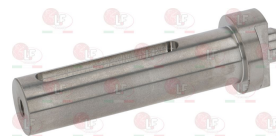
9015018 CONVEYOR SHAFT 12-22 FAMA-SIRMAN
external ø 25 mm - overall length 78 mm



SIRMAN MF0115

SIRMAN MF2109

5077282 CONVEYOR SHAFT 12-22 SIRMAN
external ø 25 mm - overall length 119 mm



SIRMAN LF2039212

5061882 CONVEYOR SHAFT 32 SIRMAN
external ø 25 mm - overall length 205 mm



SIRMAN LF2039725

9014053 DOUBLE GEAR ø 70/31.6 mm
large gear external ø 70 mm
teeth number 41
small gear external ø 31.6 mm
18 teeth



SIRMAN MF2106

Suitable for:

5030528 GEAR BIG \varnothing 98 mm
 \varnothing interno 20 mm - 2 chiavette 6 mm



SIRMAN MF0531

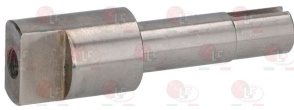
Suitable for:

5022360 GEAR PIN
 overall length 52 mm
 ext. \varnothing 15/13 mm - thread \varnothing 14 mm



SIRMAN MF2205

9240037 POTATO PEELER DISK DRIVE PIN
 pin 28x14 mm - overall height 100 mm
 for Potato peeler (SIRMAN) PP15EXPOCE - PP4ECOCE
 PP4EXPOCE - PP8ECOCE - PP8EXPOCE



SIRMAN

9014055 SMALL GEAR \varnothing 25 mm
 internal \varnothing 10 mm - number of teeth 13
 for Meat mincer (SIRMAN) TCG12 - TCG22E



SIRMAN MF0111

SIRMAN MF2104

5033891 TRANSMISSION SHAFT ALUMINIUM 530 mm
 threaded pins M6



SIRMAN IB2104005

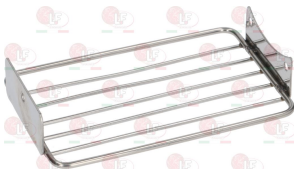
5033892 TRANSMISSION SHAFT 530 mm
 threaded pins M6-M8



SIRMAN IB1981450

Grids - Shelves

1001004 GRIGLIA INOX CON ALETTE DI FISSAGGIO
 dimensioni esterne 120x77 mm



SIRMAN MF2070

9014134 STAINLESS STEEL GRID WITH FASTENING FINNS
 external dimensions 153x100 mm



SIRMAN MF2168

Guides

5029592 TANK GUIDE 38x18 mm
 width 38 mm - height 18 mm
 mounting holes distance 25 mm
 for Cutter (SIRMAN) C4CE - C4VTCE - C4VVCE - C6CE
 C6VTCE - C6VVCE - C9VVCE



SIRMAN MSC04N028

SIRMAN MSC09V028N



Suitable for:

SIRMAN



Suitable for:

Handles

9242017 POTATO PEELER DOOR HANDLE
overall length 180 mm
for Potato peeler (SIRMAN) PP4ECOCE - PP8ECOCE



SIRMAN RG04138

9242018 POTATO PEELER DOOR HANDLE
overall length fitting included 175 mm
for Potato peeler (SIRMAN) PP15EXPOCE - PP8EXPOCE



SIRMAN RG08040

Heating elements

5077890 WELDING BAR
length 460 mm - width 25 mm - height 70 mm



SIRMAN KODK012

5031853 WELDING HEAT.ELEMENT W/PROFILE 456 mm
for Vacuum packer (SIRMAN) 45K



SIRMAN KODK001

5062345 WELDING HEATING ELEMENT 600 mm



SIRMAN MSD00012

Hinges, catches and accessories

5077081 RING CLOSING HINGE
distance between fastening holes 16 mm



SIRMAN IV7400010

Hoppers

5083829 HOPPER INTRODUCTION FAMA 12-22-32
of stainless steel
external hole \varnothing 56 mm



SIRMAN MF2207

9014118 INSERTION HOPPER FAMA 12-22-32
made of STAINLESS STEEL
hole external \varnothing 51.5 mm



SIRMAN MF2207

Suitable for:

Suitable for:

9014117 INSERTION HOPPER FAMA-SIRMAN 12
made of STAINLESS STEEL
hole external \varnothing 51.5 mm
for Meat mincer (SIRMAN) - Series 12CE



SIRMAN MF2113

Immersion arms for mixers

5075286 BLENDING ARM 450 mm



SIRMAN IB19814351

5026584 GASKET FOR BLENDING ARM
external \varnothing 47 mm
internal \varnothing 32 mm



SIRMAN IB4104005

Indicator lights

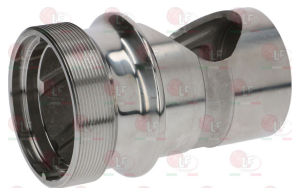
9221005 NEUTRAL INDICATOR LIGHT 220/380V
head \varnothing 20 mm - hole \varnothing 10 mm
wire connection length 200 mm
for Slicer (SIRMAN) GEMMA300 - QUARZO250
QUARZO275 - QUARZO300 - SELCE350 - SELCE370



SIRMAN 19410406

Inlet holes for meat mincers

5036192 *****
 \varnothing filetto 94 mm
 \varnothing esterno innesto 81x90 mm
lunghezza totale 145 mm
 \varnothing foro posteriore 37 mm
MODELLO PER PIASTRA A 2 TACCHE



SIRMAN MF2211

5052013 *****
 \varnothing filetto 80 mm
 \varnothing esterno innesto 72x93 mm
lunghezza totale 135 mm
 \varnothing foro posteriore 33 mm
MODELLO PER PIASTRE A DUE TACCHE



SIRMAN MF2119



Suitable for:

5073447 *****



SIRMAN MF2648

5008614 **GRANO PER BOCCA TRITACARNE 22 FAMA**
filetto M8 - lunghezza totale 13 mm



SIRMAN MF2213

9014135 **MEAT MINC.MOUTH LOCKING LEVER 32 FAMA**



SIRMAN MF0526

9014126 **MEAT MINCER MOUTH 12 C. IRON UNGER FAMA**
thread \varnothing 80 mm
coupling external \varnothing 72x95 mm
overall length 157 mm
rear hole \varnothing 33.5 mm
MODEL FOR TWO-NOTCH BLADES



SIRMAN MF2120

SIRMAN



Suitable for:

5023339 **BOCCA TRITACARNE 8 FAMA-SIRMAN**
 \varnothing innesto flangia motore 63 mm
 \varnothing filetto 70 mm - \varnothing esterno per tramoggia 59 mm



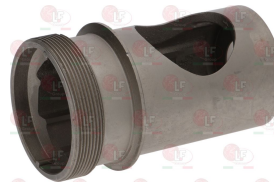
SIRMAN MF2039

9014133 **MEAT MINC.MOUTH LOCKING LEVER 12-22 FAMA**
thread M10



SIRMAN MF2189

9014546 **MEAT MINCER MOUTH 12 C. IRON FAMA-SIRMAN**
thread \varnothing 80 mm
coupling external \varnothing 73x95 mm
overall length 136 mm
rear hole \varnothing 33 mm
MODEL FOR TWO-NOTCH PLATES



SIRMAN MF2117

9014125 **MEAT MINCER MOUTH 12 S/STEEL FAMA-SIRMAN**
thread \varnothing 82 mm
coupling external \varnothing 72x93 mm
overall length 135 mm
rear hole \varnothing 33 mm
MODEL FOR TWO-NOTCH BLADES

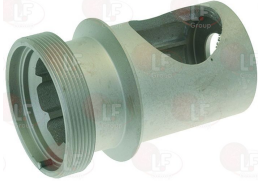


SIRMAN MF2118



Suitable for:

9014127 MEAT MINCER MOUTH 22 ALUM. FAMA
 thread \varnothing 94 mm
 coupling external \varnothing 81x93 mm
 overall length 145 mm
 rear hole \varnothing 36 mm
 MODEL FOR TWO-NOTCH BLADES



SIRMAN MF2212

Suitable for:

9014059 MEAT MINCER MOUTH 22 C. IRON FAMA-SIRMAN
 FAMA-SIRMAN - thread \varnothing 94 mm
 coupling external \varnothing 81x93.5 mm
 overall length 148 mm
 rear hole \varnothing 36 mm
 model for two-notch blades



SIRMAN MF2210

5080609 MEAT MINCER MOUTH 8 SIRMAN
 motor flange coupling \varnothing 68 mm
 thread \varnothing 70 mm - external \varnothing for hopper 52 mm



SIRMAN 29030201.14

9014128 MEAT MINCER MOUTH 22 C. IRON UNGER FAMA
 thread \varnothing 94 mm
 coupling external \varnothing 81x93 mm
 overall length 190 mm
 rear hole \varnothing 36 mm
 MODEL FOR TWO-NOTCH BLADES



SIRMAN MF2255

9014131 PIN FOR MEAT MINCER MOUTH 12 FAMA
 thread M8 - overall length 11 mm



SIRMAN MF2116

5028572 PIPE UNION MINCER 22 FAMA-SIRMAN
 \varnothing hopper insert 65 mm
 \varnothing mouth intern 80 mm



SIRMAN MF2209

Ironmongery (screws,nuts,washers)

5051009 *****
 estremità piana



SIRMAN MF2277

5055676 *****



SIRMAN MF2073

SIRMAN MF2172



Suitable for:

1241513 BLIND HEXAGONAL NUT M8 UNI 5721
stainless steel - height 16 mm UNI 5721 - DIN 1587
for Vegetables/mozzarella cutter (SIRMAN) TM



SIRMAN 19362010

Suitable for:

9528022 CYLINDER HEAD SCREW M6x12
stainless steel - with hexagon socket
UNI 5931 - DIN 912 - ISO 4762
ø head 10 mm - overall length 18 mm



SIRMAN IV77VEI06X12

SIRMAN 4000000-POS.36-2

9742007 FEATHER KEY ST. STEEL C40 5x5x20 mm
UNI 6604/A - DIN 6685/A



SIRMAN IV76C5X5X20

SIRMAN IX26885A050520

SIRMAN RG15254

9742006 FEATHER KEY ST. STEEL C40 6x6x25 mm
UNI 6604/A - DIN 6685/A
for Bone bandsaw (SIRMAN) SO2020 ALL.CE



SIRMAN 4000000-POS.22-2

5037451 SCREW WITH CYLINDER HEAD M6x18
stainless steel - with hexagon socket
UNI 5931 - DIN 912 - ISO 4762



SIRMAN IV77VEI06X18

5043101 SCREWS NO HEAD WITH HEXAGON SOCKET M4x5
stainless steel - flat edge
UNI 5923 - DIN 913 - ISO 4026



SIRMAN IV77G04X05

5055894 SHAFT KEY OF STEEL C40 4x4x12 mm
for Meat mincer (SIRMAN) TCG12E - TCG22E



SIRMAN MF2607

5063268 SHAFT KEY OF STEEL C40 6x6x20 mm
UNI 6604/A - DIN 6685/A



SIRMAN IV76CQ06X06X20

5100979 SHAFT KEY STAINLESS STEEL 3x3x15 mm
UNI 6604/A - DIN 6685/A



SIRMAN MF2105

SIRMAN MF2606

SIRMAN MF2811

5036952 SHAFT KEY 7x8x15 mm WITH HOLE
for Mussel cleaner (SIRMAN) LCJ10CE
for Potato peeler (SIRMAN) PPJ10CE - PPJ10SCCE
PPJ102VCE - PPJ20CE - PPJ20SCCE



SIRMAN IV77C7X8X15

Suitable for:

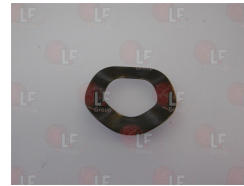
5037447 SPIRAL SPRING WASHER M6
 internal/external \varnothing 6.4/11.4 mm - thickness 3.2 mm
 stainless steel - UNI 1751 - DIN 127 B
 for POTATO PEELER PPJ10 CE



SIRMAN IV77R06

Suitable for:

5039237 WAVE WASHER ELASTIC \varnothing 32x18,5 mm
 package 10 pcs



SIRMAN 19342006

Knives for meat mincers

9014621 BRAZE WELDED MEAT MINCER KNIFE MOD.32
 model BRAZE WELDED ENTERPRISE-HOBART B98/32
 external \varnothing 91 mm - square hole 15x15 mm
 LONG LIFE - ALSO FOR REFRIGERATED MODELS



SIRMAN 281532XSB

9014408 SPARE BLADES MOD.R70/12 UNGER 9 PCS
 for meat mincer knife



SIRMAN MF2261

9014601 STAINLESS STEEL KNIFE F/MEAT MINCER 12
 model ENTERPRISE 12 self-sharpening
 external \varnothing 60 mm - square hole 12x12 mm



SIRMAN MF2130

9014602 STAINLESS STEEL KNIFE F/MEAT MINCER 22
 model ENTERPRISE 22 self-sharpening
 external \varnothing 73 mm - square hole 13x13 mm



SIRMAN LF1532000I

SIRMAN 281522X

9014604 STAINLESS STEEL KNIFE F/MEAT MINCER 42
 model ENTERPRISE 42 self-sharpening
 external \varnothing 120 mm - square hole 22x22 mm



SIRMAN 281542X

Knives for mixers

5022330 GROUP 3 BLADES
 holes \varnothing 6x8 mm



SIRMAN IB2680400



Suitable for:

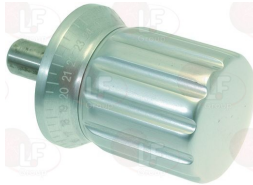
SIRMAN



Suitable for:

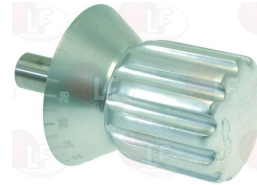
Knobs

9241008 ADJUSTABLE KNOB ALUMINIUM \varnothing 18x118 mm
 pin \varnothing 18x36 mm
 knob \varnothing 60 mm
 mounting frame \varnothing 68 mm
 for Slicer (SIRMAN) CANOVA250 - CANOVA275
 CANOVA300 - GEMMA350 - LEONARDO300BS
 LEONARDO300VCO - LEONARDO300VCS
 LEONARDO330BS - LEONARDO330VCO
 LEONARDO330VCS - PALLADIO300 - PALLADIO300INGR
 PALLADIO330 - PALLADIO330INGR - PALLADIO350



SIRMAN 19522605

9241009 ADJUSTABLE KNOB ALUMINIUM \varnothing 18x120 mm
 pin \varnothing 18x31 mm
 knob \varnothing 60 mm
 mounting frame \varnothing 79 mm
 for Slicer (SIRMAN) GALILEO350 - GALILEO350AUTO
 GALILEO350INGR - GALILEO370 - GALILEO370INGR
 GALILEO385 - GALILEO385INGR - LEONARDO350BS
 LEONARDO350BS2 - LEONARDO370BS
 LEONARDO370BS2 - LEONARDO385BS



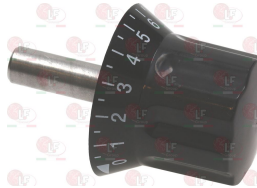
SIRMAN 19522600

9241011 ADJUSTABLE KNOB BLACK \varnothing 12x73 mm
 pin \varnothing 12x32 mm
 knob \varnothing 42 mm
 mounting frame \varnothing 47 mm
 for Slicer (SIRMAN) PERLA195 - PERLA195CEDOM
 TOPAZ195 - TOPAZ195CEDOM - TOPAZ220
 TOPAZ220CEDOM - TOPAZ250 - TOPAZ250CCEDOM
 TOPAZ250CEDOM - TOPAZ275 - TOPAZ275CEDOM



SIRMAN AMA102

9241012 ADJUSTABLE KNOB BLACK \varnothing 12x80 mm
 pin \varnothing 12x36 mm
 knob \varnothing 40 mm
 mounting frame \varnothing 55 mm
 for Slicer (SIRMAN) PERLA250 - PERLA250CEDOM



SIRMAN AMG102

9241002 ADJUSTABLE KNOB BLACK \varnothing 12x83 mm
 pin \varnothing 12x33 mm
 knob \varnothing 47 mm
 mounting frame \varnothing 59 mm
 for Slicer (SIRMAN) GEMMA300 - MIRRA220 - MIRRA250
 MIRRA275 - MIRRA300



SIRMAN 19562403

5014692 ADJUSTABLE KNOB BLACK \varnothing 12x96 mm
 pin \varnothing 12x33 mm
 knob \varnothing 58 mm
 plate \varnothing 59 mm



SIRMAN 19562402



Suitable for:

9007500 ADJUSTABLE KNOB BLACK \varnothing 18x110 mm
 pin \varnothing 18x50 mm
 knob \varnothing 66 mm
 mounting frame \varnothing 69 mm
 for Slicer (SIRMAN) AGATA250 - AGATA275 - AGATA300
 AGATA300V - AGATA330CE - AGATA350 - AGATA350CE



SIRMAN AVA102

Suitable for:

9241003 ADJUSTABLE KNOB BLACK \varnothing 18x112 mm
 pin \varnothing 18x48 mm
 knob \varnothing 58 mm
 mounting frame \varnothing 68 mm
 for Slicer (SIRMAN) AUTOMATICA300 - AUTOMATICA330
 AUTOMATICA350 - AUTOMATICA370 - GEMMA300
 GEMMA330 - GEMMA350 - MAINZ250 - QUARZO250
 QUARZO275 - QUARZO300 - SELCE350 - SELCE370
 VASBS300 - VASBS350 - VASBS370 - VAS250
 VAS275 - VCO250 - VCO275 - VCO300 - VCS300
 VCS350 - VCS370



SIRMAN 19562404

SIRMAN 19562406BZ

9007501 ADJUSTABLE KNOB BLACK \varnothing 18x121 mm
 pin \varnothing 18x56 mm
 knob \varnothing 66 mm
 mounting frame \varnothing 69 mm



SIRMAN 19562404

5067343 ADJUSTABLE KNOB GRAY \varnothing 18x102 mm
 pin \varnothing 18x33 mm
 knob \varnothing 66 mm
 plate \varnothing 68 mm



SIRMAN 19564035

9241010 ADJUSTABLE KNOB GRAY \varnothing 18x104 mm
 pin \varnothing 18x40 mm
 knob \varnothing 58 mm
 mounting frame \varnothing 68 mm
 for Slicer (SIRMAN) GALILEO350STD - GALILEO370STD
 GALILEO385STD - LEONARDO350BSSTD
 LEONARDO350VCSTD - LEONARDO370BSSTD
 LEONARDO370VCSTD - PALLADIO300STD
 PALLADIO330STD - PALLADIO350STD



SIRMAN 19564033

SIRMAN 19564036

9016043 BLACK INLET HOLDING HANDLE \varnothing 40 mm
 with pin pitch M8
 with pin length 25 mm



SIRMAN MF2040

5080615 BLACK INLET HOLDING HANDLE \varnothing 50 mm
 with pin pitch M10 with pin length 53 mm



SIRMAN 29561600.14

5023849 BLACK KNOB \varnothing 22.5 mm
 round hole \varnothing 6 mm
 for POTENTIOMETER
 for Cutter (SIRMAN) C4VT - C4VV - C6VT - C6VV
 C9VV



SIRMAN MSC04V236



SIRMAN



Suitable for:

5015696 BLACK KNOB \varnothing 26x77 mm PITCH M6
with pin length 6 mm
for Slicer (SIRMAN) MINIV250 - MINI250 - MIRRAV220
MIRRAV250 - MIRRAV275 - MIRRA220 - MIRRA250
MIRRA275



SIRMAN 19562900

Suitable for:

9007525 BLACK KNOB \varnothing 40 mm PITCH M8
without pin
for Slicer (SIRMAN)



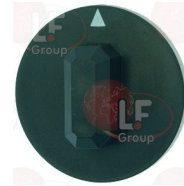
SIRMAN 19562504

3241174 BLACK KNOB \varnothing 44 mm
D shaft hole 6x4.6 mm



SIRMAN RG04352

3241380 BLACK KNOB \varnothing 44 mm
squared hole 3.5x3.5 mm



SIRMAN IV5966011

9007509 BLACK KNOB FOR CARRIAGE \varnothing 66 mm M12
without pin



SIRMAN AVG256

9241001 BLACK OVAL KNOB \varnothing 32x86 PITCH M9
with pin length 6 mm
for Slicer (SIRMAN) MIRRAVB.S.275CE
MIRRAVB.S.300 CE - MIRRA300Y09 - MIRRA300Y09UL
SELCE350UL - SELCE370UL



SIRMAN 19562905

5030585 BLUE ARM KNOB \varnothing 20x70 mm PITCH M6
with pin length 10 mm
for Slicer (SIRMAN) MIRRA220C - MIRRA275
MIRRA300



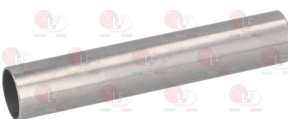
SIRMAN 19564019

1241075 BLUE KNOB \varnothing 32x102 mm PITCH M10
wdsdsa
for Slicer (SIRMAN) LEONARDO300 - LEONARDO330
LEONARDO350 - LEONARDO385



SIRMAN 19522646

5060082 HANDLE EXTENSION MEAT-HOLDING ARM
external \varnothing 22 mm - internal \varnothing 20 mm
length 120 mm



SIRMAN AVA283

5059722 HANDLE ALUMINIUM \varnothing 32x103 mm PITCH M10
without pin



SIRMAN 19522645

Suitable for:

Suitable for:

5028195 HANDLE BLACK \varnothing 40 mm PITCH M6
without pin
OPAQUE BLACK colour



SIRMAN 19562502

5028439 HANDLE BLACK FOR LEVER \varnothing 28x80 mm M8x1



SIRMAN MF2359

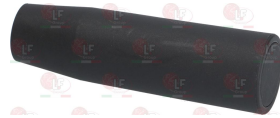
5050056 KNOB \varnothing 40 mm PITCH M8



SIRMAN LF1537002

SIRMAN 29561651

5076438 KNOB BLACK \varnothing 27x91 mm PITCH M10
without pin



SIRMAN AVA264

SIRMAN 19562903

5067672 KNOB BLACK \varnothing 30 mm PITCH M8
with pin length 63 mm



SIRMAN SM592400

5032097 KNOB BLACK \varnothing 55 mm PITCH M10
with pin length 35 mm
for MEAT SLICERS VAS 350/370-VCS 350/370



SIRMAN SM211015

9007003 KNOB BLACK INLET HOLD \varnothing 50 mm
with pin / pitch M10
with pin length 30 mm



SIRMAN MF2115

9007524 KNOB BLACK PITCH M6 \varnothing 40 mm
without pin



SIRMAN 19562601

5060665 KNOB BLUE \varnothing 50 mm PITCH M8
without pin



SIRMAN 19564013

9007508 KNOB FOR CARRIAGE BLACK \varnothing 65 mm M10 PITC
no pin
for Slicer (SIRMAN)



SIRMAN 19562802



Suitable for:

5081396 KNOB FOR CARRIAGE BLACK \varnothing 67mm PITHC M12
without pin



SIRMAN 19562803

Suitable for:

5056709 KNOB FOR CARRIAGE GRAY \varnothing 65 mm M10
without pin



SIRMAN 19564022

5084210 KNOB FOR SPEED REGULATOR \varnothing 23 mm
round hole \varnothing 5 mm



SIRMAN IB4200705

5054471 KNOB GRAY \varnothing 30 mm PITCH MA8
without pin



SIRMAN 19564024

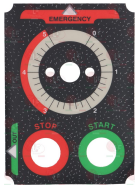
5032486 ROUND KNOB \varnothing 46x52 mm PITCH M8



SIRMAN IV4200010

Labels for control panels

5051402 CONTROL PLATE TIMER 140x100 mm



SIRMAN RG04348

Lids

5025486 COVER CAP \varnothing 27x47 mm
for Cutter (SIRMAN) C4CE - C4VTCE - C4VVCE - C6CE
C6VTCE - C6VVCE



SIRMAN MSC04N054

9734034 COVER FOR POTATO PEELER \varnothing 217 mm
for Potato peeler (SIRMAN) PPJ10CE - PPJ20CE



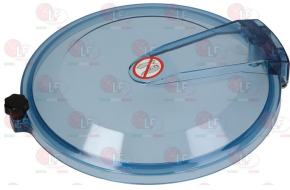
SIRMAN IV4050600

Suitable for:

Suitable for:

9720027 COVER FOR POTATO PEELER ø 310 mm
complete with knob
for Potato peeler (SIRMAN) PP15EXPOCE - PP4EXPOCE
PP8EXPOCE

9240027 LID MAGNET
external ø 22 mm - M5x10 mm
for Potato peeler (SIRMAN) PP15EXPOCE - PP4ECOCE
PP4EXPOCE - PP8ECOCE - PP8EXPOCE
for Vegetables/mozzarella cutter (SIRMAN) ATHOSCE



SIRMAN RG04002
SIRMAN RG04006

SIRMAN RG04002+04+06+08
SIRMAN RG04008

SIRMAN RG04004

SIRMAN IB5823050

SIRMAN IV5823050

5027273 CUTTER LID ø 225 mm
for Cutter (SIRMAN)
since 1/01/00
till 31/08/03 C4CE - C4VVCE - C6CE - C6VVCE

5025486 COVER CAP ø 27x47 mm
for Cutter (SIRMAN) C4CE - C4VTCE - C4VVCE - C6CE
C6VTCE - C6VVCE



SIRMAN MSC04N052

SIRMAN MSC04N054

9720024 CUTTER LID ø 225 mm
for Cutter (SIRMAN)
since 1/01/93
till 31/12/99 C4CE - C4VVCE - C6CE - C6VVCE

5025486 COVER CAP ø 27x47 mm
for Cutter (SIRMAN) C4CE - C4VTCE - C4VVCE - C6CE
C6VTCE - C6VVCE



SIRMAN MSC04N052V2

SIRMAN MSC04N054

9720038 CUTTER LID ø 225 mm
complete with gasket
for Cutter (SIRMAN)
till 31/12/92 C4CE - C4VVCE - C6CE - C6VVCE
since 1/08/03 C4CE - C4VVCE - C6CE - C6VVCE

5025486 COVER CAP ø 27x47 mm
for Cutter (SIRMAN) C4CE - C4VTCE - C4VVCE - C6CE
C6VTCE - C6VVCE



SIRMAN MSC04N052V1

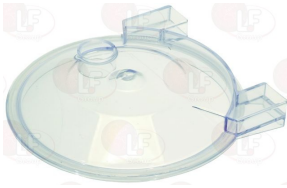
SIRMAN MSC04V052A

SIRMAN MSC04N054



Suitable for:

9734008 CUTTER LID \varnothing 265 mm
complete with gasket
for Cutter (SIRMAN)
since 1/10/03 C9 - C9VV



SIRMAN MSC09V052A

Suitable for:

5030120 LID FOR CUTTER \varnothing 300 mm
internal \varnothing 280 mm
complete with knob



SIRMAN MSC15N052

5021975 PLASTIC COVER \varnothing 78 mm
for MOTOR COVER



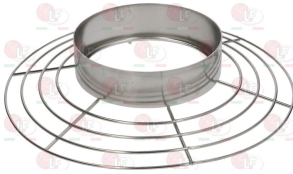
SIRMAN MF2002

9016045 PLASTIC COVER \varnothing 98 mm
for MOTOR COVER-GRATER UNIT



SIRMAN MF2152

5057536 PROTECTION FOR TANK OF STAINLESS STEEL
external \varnothing 225 mm - internal \varnothing 110 mm
overall height 48 mm
for Kneader (SIRMAN) PLUTONE7



SIRMAN CINP7-08-00

SIRMAN CINP7-40200100

Magnets

5032570 COVERED MAGNET \varnothing 33x6x4 mm



SIRMAN LF1039710

9014001 CYLINDRICAL MAGNET \varnothing 6x13 mm
for Potato peeler (SIRMAN) PP15EXPOCE - PP8EXPOCE



SIRMAN RG08054

9014002 CYLINDRICAL MAGNET \varnothing 6x20 mm



SIRMAN MF2925

9240027 LID MAGNET
external \varnothing 22 mm - M5x10 mm
for Potato peeler (SIRMAN) PP15EXPOCE - PP4ECOCE
PP4EXPOCE - PP8ECOCE - PP8EXPOCE
for Vegetables/mozzarella cutter (SIRMAN) ATHOSCE

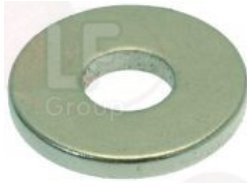


SIRMAN IB5823050

SIRMAN IV5823050

Suitable for:

9240012 MAGNET FOR MICROSWITCH
 external \varnothing 16 mm-internal \varnothing 6 mm-thickness 2 mm
 for Bone bandsaw (SIRMAN)
 for Meat mincer (SIRMAN)
 for Slicer (SIRMAN)



SIRMAN LF1033303

Suitable for:

9720035 MAGNET HOLDER FOR POTATO PEELER
 for Potato peeler (SIRMAN) PP15EXPOCE - PP4EXPOCE
 PP8EXPOCE



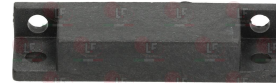
SIRMAN RG04126

1240011 MICROSWITCH MAGNET \varnothing 8x4 mm
 for Bone bandsaw (SIRMAN)
 for Grater (SIRMAN)
 for Meat mincer (SIRMAN)



SIRMAN LF1010004

3240181 PROTECTED MAGNET 62x18x10 mm
 for Vegetables/mozzarella cutter (SIRMAN) TM



SIRMAN IV5820050

SIRMAN LF1050103

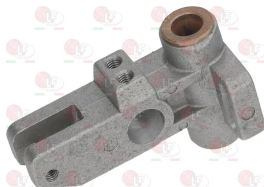
9014042 RECTANGULAR MAGNET M302
 36x13x8 mm
 for Potato peeler (SIRMAN) PP4EXPOCE



SIRMAN RG04146

Meat hold arm

5034965 GAUGE PLATE MOVEMENT FOR SLICER
 length 87 mm
 width 56 mm
 height 38 mm
 holes \varnothing 15 mm - shaft hole \varnothing 12 mm



SIRMAN SM500218

5015670 MOZZARELLA CUTTER PRESSING LEVER 144 mm
 for Vegetables/mozzarella cutter (SIRMAN)
 TMCOPALLCE - TMCOPINOXCE



SIRMAN IV4010000



Suitable for:

SIRMAN



Suitable for:

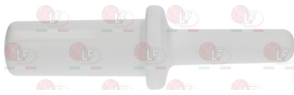
5024427 **MOZZARELLA HOLDER CUTTER LEVER 138 mm**
for Vegetables/mozzarella cutter (SIRMAN)
till 1/09/07 TMCOPALLCE



SIRMAN IV401000KN

Meat rammers

5058435 *****
pieno all'interno



SIRMAN MF2037

5036021 **MASHER FOR MOZZARELLA CUTTER**
trapezoidal section 97/55x65 mm
overall length 230 mm



SIRMAN MF2272

5015671 **MASHER FOR MOZZARELLA CUTTER ø 50x140 mm**
internal solid
for Vegetables/mozzarella cutter (SIRMAN)
TMCOPALLCE - TMCOPALLETL - TMCOPINOXCE
TMCOPINOXETL



SIRMAN IV98407400

9014115 **MEAT MINCER MASHER ø 46x116 mm**
empty inside



SIRMAN MF2114

SIRMAN MF2208

5032346 **MEAT MINCER MASHER ø 48x160 mm**
empty inside



SIRMAN LF1533004

SIRMAN LF2035861

Microswitches, mechanical

5032468 **BLACK COVER FOR MICROSWITCH**



SIRMAN MF2163

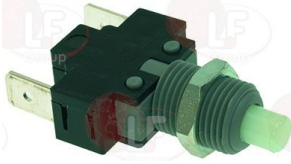
5028196 **DOOR RING MICRO**



SIRMAN 19540901

Suitable for:

9014083 MICRO SWITCH ROLD E2167-A
16A 250V
for Vegetables/mozzarella cutter (SIRMAN)
TMCPALLCE



SIRMAN IV5820010

5020476 SPRING FOR MICROSWITCH \varnothing 8x20 mm
for Vegetables/mozzarella cutter (SIRMAN)
TMCOPALLCE - TMCOPINOXCE



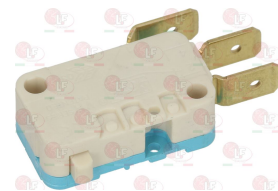
SIRMAN IV75MTM

9014051 MICROSWITCH CROUZET U83161.1
12A 250V
for Cutter (SIRMAN) C4CE - C4VTCE - C4VVCE - C6CE
C6VTCE - C6VVCE - C9VVCE



SIRMAN MSC04N292

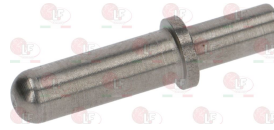
3240123 MICROSWITCH ROLD VRSRB1DA1
16A 250V



SIRMAN IB5820800

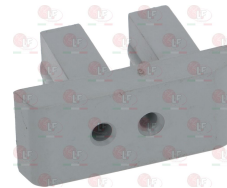
Suitable for:

5020475 SPACER FOR MICROSWITCH
overall length 31 mm
 \varnothing 6 x 18.5 mm
 \varnothing 5 x 10.5 mm



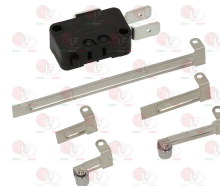
SIRMAN IV2080050

5101075 SUPPORT FOR MICROSWITCHES 1 HOLE
height 39 mm
length 65 mm
width 26 mm



SIRMAN IV4010020

3240407 MICROSWITCH KIT 16A 250V
2 locking positions
the kit includes 5 levers:
lever 75 mm - lever 27 mm - lever 15 mm
lever 15 mm with wheel - lever 27 mm with wheel
for Cutter (SIRMAN) C4 - C4VV - C6 - C6VV - C9
C9VV



SIRMAN MSC04N262

3240410 MICROSWITCH 16(4)A 250V
for Cutter (SIRMAN) C4 - C6 - C6VV - C9



SIRMAN MSC04N276

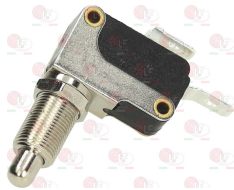


Suitable for:

Suitable for:

9014018 MICROSWITCH 16(4)A 250V
 for Slicer (SIRMAN) AGATA250 - AUTOMATICA300CE
 AUTOMATICA330CE - AUTOMATICA350CE
 AUTOMATICA370CE - CANOVA250CE - CANOVA275CE
 CANOVA300CE - GALILEO350AUTOCE - GALILEO350CE
 GALILEO350STDCE - GALILEO370CE
 GALILEO370STDCE - GALILEO385CE
 GALILEO385STDCE - GEMMA300 - GEMMA300CE
 GEMMA300UL - GEMMA330 - GEMMA330CE
 GEMMA330UL - GEMMA350CE - LEONARDO300BSCE
 LEONARDO300VCOCE - LEONARDO300VCSCCE
 LEONARDO330BSCE - LEONARDO330VCOCE
 LEONARDO330VCSCCE - LEONARDO350BSCE
 LEONARDO350BSTOPCE - LEONARDO350BS2TOPCE
 LEONARDO350VCSCCE - LEONARDO350VCSTOPCE
 LEONARDO370BSCE - LEONARDO370BSTOPCE

5050551 MICROSWITCHES SUPPORT 2 HOLES
 height 39 mm
 length 65 mm
 width 26 mm



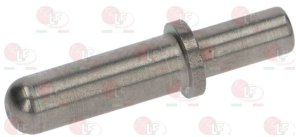
SIRMAN AVA664A

SIRMAN 19410201

SIRMAN IV4010030

5020475 SPACER FOR MICROSWITCH
 overall length 31 mm
 ø 6 x 18.5 mm
 ø 5 x 10.5 mm

5021582 SPACER FOR MICROSWITCH
 overall length 22 mm
 ø 6 x 11,5 mm
 ø 5 x 9 mm



SIRMAN IV2080050

SIRMAN IV2080030

5020476 SPRING FOR MICROSWITCH ø 8x20 mm
 for Vegetables/mozzarella cutter (SIRMAN)
 TMCOPALLCE - TMCOPINOXCE

9240013 SUPPORT FOR MICROSWITCH
 for Cutter (SIRMAN) C4 - C4VV - C6 - C6VV - C9
 C9VV



SIRMAN IV75MTM

SIRMAN MSC04N264

5101075 SUPPORT FOR MICROSWITCHES 1 HOLE
 height 39 mm
 length 65 mm
 width 26 mm



SIRMAN IV4010020



Microswitches, magnetic

5051933 *****
 0,5A 125V 10W - NO contact - head 32x13x8 mm
 cable length 450 mm



SIRMAN MF2362

9240005 **MAGNETIC MICRO SWITCH \varnothing 8x36 mm**
 0.04A 250V - contact NO
 with cable length 1740 mm
 for Potato peeler (SIRMAN) PP15EXPOCE - PP4EXPOCE
 PP8EXPOCE



SIRMAN RG04224

9240035 **MAGNETIC MICROSWITCH \varnothing 8x33 mm**
 0.5A 125V - 2 contacts NO
 with cable length 1200 mm
 for Potato peeler (SIRMAN) PP15EXPOCE - PP4ECOCE
 PP4EXPOCE - PP8ECOCE - PP8EXPOCE



SIRMAN RG04094

9014043 **MAGNETIC MICROSWITCH \varnothing 8x36 mm**
 0.04A 250V - contact NO
 with cable length 750 mm



SIRMAN MF2274

9240010 **MAGNETIC MICROSWITCH \varnothing 8x50 mm**
 0.5A 150V 10W - contact NO
 with cable length 400 mm
 for Vegetables/mozzarella cutter (SIRMAN)
 TMCOPALLCE



SIRMAN IV5820500

3240498 **MAGNETIC MICROSWITCH STEM D102 1B**
 1-NO 1A 250V 50W
 cylindrical deflector \varnothing 10x33 mm thread M10x0.75
 cable length 2000 mm
 for Bone bandsaw (SIRMAN)
 for Meat mincer (SIRMAN)
 for Potato peeler (SIRMAN) PPJ10CE - PPJ20CE



SIRMAN IV5820510

SIRMAN LF1033302

9014016 **MAGNETIC MICROSWITCH STEM E510 1A**
 1-NO 0.5A 150V - head 32x13x8 mm
 with cable length 750 mm
 for Vegetables/mozzarella cutter (SIRMAN)
 TMCOPALLCE - TMCOPINOXCE



SIRMAN IV5820000

1240013 **MAGNETIC MICROSWITCH STEM E522 2R**
 1A 250VAC 50W - double contact NO-NO
 head 40x8x13 mm - with cable length 1170 mm
 for Bone bandsaw (SIRMAN)
 for Grater (SIRMAN)
 for Meat mincer (SIRMAN)



SIRMAN LF1010005



Suitable for:

SIRMAN



Suitable for:

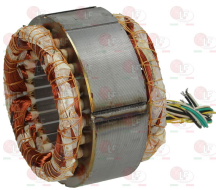
5036526 MICROSWITCH MAGNETIC \varnothing 8x36 mm
1A 50W 250V - NO contact
with cable length 300 mm



SIRMAN MF2717

Motors

5055675 *****
 \varnothing esterno 150 mm - \varnothing interno 83,6 mm
altezza totale 100 mm



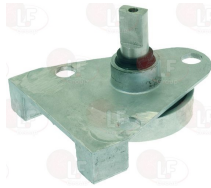
SIRMAN MF2097

5029687 CAP FOR VENTILATED MOTOR \varnothing 172 mm
for Meat mincer (SIRMAN) TC12E - TC22E



SIRMAN MF2087

9240031 COMPLETE POTATO PEELER MOTOR SUPPORT
pin 28x14 mm
for Potato peeler (SIRMAN) PP4ECOCE - PP4EXPOCE



SIRMAN

9240032 COMPLETE POTATO PEELER MOTOR SUPPORT
pin 28x14 mm
for Potato peeler (SIRMAN) PP8ECOCE - PP8EXPOCE



SIRMAN

9240033 COMPLETE POTATO PEELER MOTOR SUPPORT
pin 28x14 mm
for Potato peeler (SIRMAN) PP15EXPOCE



SIRMAN

5025571 MOTOR C71/40 0.147Kw 230V 50Hz
0.85A - 1400rpm
for Slicer (SIRMAN) MIRRA275 - MIRRA275CE
MIRRA300 - MIRRA300CE



SIRMAN SM400108

5076044 MOTOR SING.-PH. M71-4M 0,115Kw 230V 50Hz
pulley 10 grooves \varnothing 15 mm



SIRMAN 19403042

5076169 MOTOR SINGLE-PHASE 230V 50Hz
1400rpm - pulley 10 grooves \varnothing 15 mm



SIRMAN AMC648



Suitable for:

5034163 MOTOR TYPE 93 0.75Kw 230V 50Hz
external ø flange 125 mm

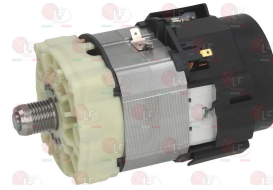


SIRMAN IB5054002C

SIRMAN IB9866005

Suitable for:

5025312 MOTOR 230V 50Hz
pulley ø 20 mm - 7 grooves
for Cutter (SIRMAN) C4CE - C4VTCE - C4VVCE - C6CE
C6VTCE - C6VVCE - C9VVCE



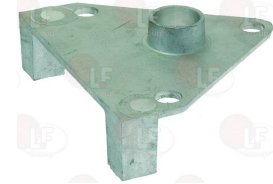
SIRMAN MSC04N136

9240038 POTATO PEELER MOTOR SUPPORT BRACKET
for Potato peeler (SIRMAN) PP4ECOCE - PP4EXPOCE
PP8ECOCE



SIRMAN RG04246

9240039 POTATO PEELER MOTOR SUPPORT BRACKET
for Potato peeler (SIRMAN) PP8EXPOCE



SIRMAN RG08246

9240040 POTATO PEELER MOTOR SUPPORT BRACKET
for Potato peeler (SIRMAN) PP15EXPOCE



SIRMAN RG15246

O-Ring and ORM gaskets

5023988 *****



SIRMAN MF2351

5031739 GASKET OR 081175 SILICONE RED



SIRMAN LF1211402

5060454 O-RING 02137 SILICONE



SIRMAN IB4104006

1186748 O-RING 04300 EPDM



SIRMAN IV200600



Suitable for:

SIRMAN



5032360 O-RING 081175 NBR
external \varnothing 310 mm - internal \varnothing 300 mm
thickness 6.5 mm
for Sausage filler (SIRMAN) IS35IDR.VERT.
IS50IDR.INOX



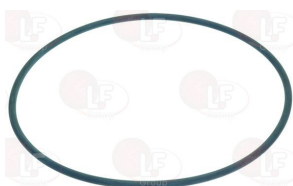
SIRMAN LF1211401

5024838 O-RING 08725 EPDM \varnothing 196x180x7 mm
for Sausage filler (SIRMAN) IS12ARIES VERT.MAN.
IS15IDRACE - IS16ARIES - IS16IDR.INOX
IS16INOX - IS16INOX VERT.BANCO



SIRMAN LF1211002

5026360 O-RING 08950 EPDM
external \varnothing 254.5 mm - internal \varnothing 240.5 mm
section \varnothing 7 mm



SIRMAN LF1211301

5029810 O-RING 08950 RED SILICONE
external \varnothing 254.5 mm - internal \varnothing 240.5 mm
cross-section \varnothing 7 mm
for Sausage filler (SIRMAN) IS25IDRACE



SIRMAN LF1211302

1786159 RED SILICONE O-RING 02062



SIRMAN IB4104004

Pins

5026203 *****
asse \varnothing 15x12 mm
filetto \varnothing 12 mm
flangia \varnothing 22 mm



SIRMAN MF2252

5026479 *****
shaft \varnothing 18x15 mm
thread \varnothing 20 mm
flange \varnothing 25 mm



SIRMAN MF2652

5062838 *****
asse \varnothing 13 mm
parte quadra 14,2x14,2 mm
filetto \varnothing 14x25 mm
flangia \varnothing 25 mm



SIRMAN MF2517

5047658 BLADE COVER PIN FOR SLICER
external \varnothing 22/13 mm - height 20 mm
fastening thread M6



SIRMAN 19521610.02

5081382 BLADE COVER PIN FOR SLICER
 exagonal part side 6 mm - thread F M6
 fastening thread M12 - overall height 18 mm



SIRMAN 19530930.10

Suitable for:

5028901 PIN FOR MEAT MINCER UNGER 12 FAMA-SIRMAN
 shaft \varnothing 11x9 mm
 thread \varnothing 12 mm
 flange \varnothing 20 mm



SIRMAN MF2129

9015069 PIN FOR MEAT MINCER 12 FAMA-SIRMAN
 shaft \varnothing 9.9 mm
 square part 11.5x11.5 mm
 thread \varnothing 12x20 mm



SIRMAN MF2127

9015070 PIN FOR MEAT MINCER 22 FAMA-SIRMAN
 shaft \varnothing 11 mm
 square part 12.6x12.6 mm
 thread \varnothing 12x20 mm



SIRMAN MF0194

SIRMAN MF2217

5028217 PIN FOR MEAT MINCER 22 SIRMAN
 shaft \varnothing 11 mm
 square 12,6 mm
 flange \varnothing 21 mm
 thread \varnothing 16x23 mm pitch 1,5



SIRMAN LF2032008

9015071 PIN FOR MEAT MINCER 32 FAMA
 shaft \varnothing 13 mm
 square part 14.2x14.2 mm
 thread \varnothing 20x25 mm
 flange \varnothing 25 mm



SIRMAN MF2628

5032087 PIN FOR MEAT MINCER 32 SIRMAN
 shaft \varnothing 13 mm - flange \varnothing 29,5 mm
 square side 14,5x14,5 mm
 thread \varnothing 20x27 mm
 for MEAT MINCER TC32



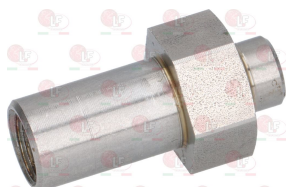
SIRMAN LF2033013

9015074 PIN FOR MEAT MINCER 8 FAMA-FIMAR-SIRMAN
 shaft \varnothing 8.5 mm
 square part 10x10 mm
 thread \varnothing 10x16 mm



SIRMAN MF2043

5058144 PLATE RELEASING PIN 30 mm
 thread M8 - \varnothing 10,5 mm



SIRMAN 19534034

5038845 PROPELLER PIN UNGER MOD. 22
 pin M16 - overall length 81,5 mm
 for MEAT MINCER TC 22 RIO



SIRMAN LF2032102



Suitable for:

SIRMAN



Suitable for:

Plates for mincers

- 9015526 SELF-SHARPENING ST. STEEL PLATE 22/4.5**
 model 22 ENTERPRISE self-sharpening
 outlet holes \varnothing 4.5 mm
 external \varnothing 82.7 mm - central hole \varnothing 11,4 mm



SIRMAN LF1532045I2

Potentiometers

- 5025313 COMPLETE POTENTIOMETER**
 with cable length 270 mm
 shaft \varnothing 6 mm
 for Cutter (SIRMAN) C4VTCE - C4VVCE - C6VTCE
 C6VVCE



SIRMAN 19414060

SIRMAN 19414060N

- 5023849 BLACK KNOB \varnothing 22.5 mm**
 round hole \varnothing 6 mm
 for POTENTIOMETER
 for Cutter (SIRMAN) C4VT - C4VV - C6VT - C6VV
 C9VV



SIRMAN MSC04V236

- 9057007 POTENTIOMETER SET COMPLETE**
 cable length 230 mm
 pin \varnothing 6 mm
 for Cutter (SIRMAN)
 till 1/04/99 C4VV - C6VV C9VV



SIRMAN MSC04V257

- 5039606 SPEED ADJUSTER**
 pin \varnothing 6 mm
 for PLANETARY PLUTONE 7 L CE



SIRMAN CINP7-2

SIRMAN CINP7-50506068

Pulleys

- 5023229 DRUM PULLEY \varnothing 140 mm**
 height 25 mm
 for Cutter (SIRMAN) C4CE - C4VVCE - C6CE - C6VVCE



SIRMAN MSC04N108

- 5028325 LARGE PULLEY \varnothing 204 mm**
 height 36 mm



SIRMAN RG15268



Reducers mechanical

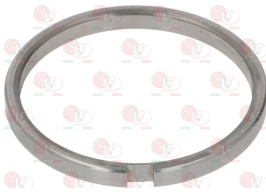
5057288 *****



SIRMAN MF2640

Rings

5049942



SIRMAN MF2257

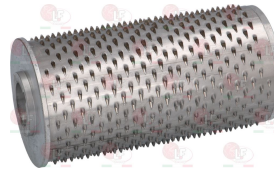
Rolls for graters and spares

5082255 FLANGE FOR GRATING ROLL \varnothing 75 mm
internal hole \varnothing 25 mm - overall height 24 mm



SIRMAN MF0149

9016507 GRATING ROLL MOD.12 FIMAR
external \varnothing 71 mm - \varnothing central hole 25 mm
roller length 136 mm (without flanges)



SIRMAN

9733527 GRATING ROLL MOD.8 FIMAR
external \varnothing 60 mm - \varnothing central hole 20 mm
roller length 112 mm (without flanges)

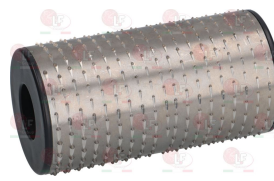


SIRMAN MF2055
SIRMAN MF2057

SIRMAN MF2056

SIRMAN MF2056+..

5063406 GRATING ROLL MOD.8 SIRMAN
external \varnothing 60 mm - middle hole \varnothing 15/25 mm
roll length 110 mm (flanges excluded)



SIRMAN 29531100

9016042 GRATING ROLL PUNCHED MOD.12-22 FAMA
external \varnothing 75 mm - \varnothing central hole 26 mm
roller length 142 mm (without flanges)



SIRMAN MF0150

SIRMAN MF2155

SIRMAN MF2156

9016041 GRATING ROLL ST. STEEL MOD.12-22 FAMA
external \varnothing 75 mm - central hole \varnothing 26 mm
roller length 142 mm (without flange)



SIRMAN MF2155

SIRMAN MF2158

SIRMAN MF2158+MF2155



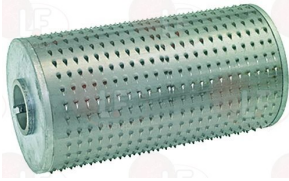
Suitable for:

SIRMAN



Suitable for:

9016514 GRATING ROLL ST. STEEL RHENINGHAUS
external \varnothing w/ points 76 mm - \varnothing central hole 25 mm
overall roller length 147 mm



SIRMAN

Rotary switches

5080611 *****
portata contatti 12A 600V - max 60/75°C
perno 5x5 mm



SIRMAN MF2366

5029082 REVERSE-SWITCH 2-POLE
contact capacity 12A 600V - max 60/75°C
for Meat mincer (SIRMAN) TC12E - TC22E



SIRMAN MF2364

5027460 REVERSING SWITCH 3-POLES
contact capacity 12A 600V - max 60/75°C
for Meat mincer (SIRMAN) TC12E - TC22E



SIRMAN MF2365

9057012 SELEC. SWITCH SINGLE-PHASE 0-1 POSITIONS
contact capacity 16A 690V - max 60/75°C
square pin 5x5 mm
for Slicer (SIRMAN) AGATA250 - AGATA275 - AGATA300
AGATA350 - GALILEO350USA - GEMMA300
GEMMA300UL - GEMMA330 - GEMMA330UL - GEMMA350
MIRRA300UL - QUARZO250 - QUARZO250UL
QUARZO275 - QUARZO300 - SELCE350 - SELCE350UL
SELCE370 - SELCE370UL - VAS250CE - VAS275CE



SIRMAN 19410160

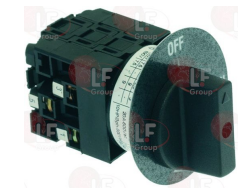
9057006 SELECTOR SWITCH 0-2 POSITIONS
contact capacity 16A 600V - max 60/75°C
shaft 7x8 mm
for Meat mincer (SIRMAN)
till 31/12/98 TC32INDALTO - TC42INDALTO TC12DALLAS
TC12DALLASCE - TC12F - TC12RIOCE
TC22DALLASCE - TC22F - TC22PFCE - TC22RIOCE
TC32DALLASCE - TC32INDCE - TC32PFCE
TC32RIOCE - TC32S - TC42INDCE



SIRMAN LF1032001

SIRMAN LF1033001

9057013 THREE-PHASE SELECTOR SW. 0-1 POSITIONS
contact capacity 20A 600V - max 60/75°C
square shaft 5x5 mm
for Slicer (SIRMAN) AGATA250 - AGATA275 - AGATA300
AGATA350 - GALILEO350USA - GEMMA300
GEMMA300UL - GEMMA330 - GEMMA330UL
GEMMA350UL - MIRRA300UL - QUARZO250
QUARZO250UL - QUARZO275 - QUARZO300 - SELCE350
SELCE350UL - SELCE370 - SELCE370UL - VAS250CE
VAS275CE



SIRMAN 19410161



Scrapers and accessories

5028605 BONE BANDSAW SCRAPER 45x25 mm
 for Bone bandsaw (SIRMAN) SO1650ALLCE
 SO1650BREMENCE - SO1650INOXCE
 SO1650IXBASICCE - SO1650IXCE - SO1840ALLCE
 SO1840ALLF2CE - SO2020IXBASICCE - SO2020IXCE
 SO2020IXCE BANCO - SO2020IXCE PAV.



SIRMAN LF2001032

5028606 BONE BANDSAW SCRAPER 63x25 mm
 for Bone bandsaw (SIRMAN) SO2020IXBASICCE
 SO2020IXCE - SO2020IXCE BANCO
 SO2020IXCE PAV. - SO2400IXCE - SO3100INOXCE
 SO3100IXCE



SIRMAN LF2001031

9016046 SCRAPER FOR BONE BANDSAW
 dimensions 40x16x11 mm
 for Bone bandsaw (SIRMAN)



SIRMAN LF2010012

Scrolls

5030142 *****
 ø coclea 53x160 mm - ø innesto 29 mm
 lunghezza perno innesto 40 mm



SIRMAN MF2125

SIRMAN MF2125+MF2129

SIRMAN MF2129

5057179 *****
 ø coclea 80x172 mm - ø innesto 38/32 mm
 lunghezza perno innesto 70 mm



SIRMAN MF2627

SIRMAN MF2627+MF2652

SIRMAN MF2652

9014121 COMPL.STAIN.STEEL SCROLL UNGER 12 FAMA
 scroll ø 54x120 mm - clamp ø 30 mm
 fitting pin length 39 mm



SIRMAN MF2126+MF2129

9014124 COMPLETE CAST IRON SCROLL UNGER 22 FAMA
 scroll ø 64x130 mm - clamp ø 32 mm
 fitting pin length 54 mm



SIRMAN MF2242+MF2252



Suitable for:

SIRMAN



5066891 **SCROLL COMPLETE ALUM. 12 SIRMAN**
scroll \varnothing 57x140 mm - ring \varnothing 52 mm
coupling pin length 25 mm



SIRMAN 29030311

Suitable for:

9014119 **SCROLL COMPLETE ALUMINIUM 12 FAMA-SIRMAN**
scroll \varnothing 54x120 mm - clamp \varnothing 30 mm
fitting pin length 29 mm



SIRMAN MF2122

SIRMAN MF2122+MF2127

SIRMAN MF2127

9014122 **SCROLL COMPLETE ALUMINIUM 22 FAMA-SIRMAN**
scroll \varnothing 64x130 mm - clamp \varnothing 33 mm
fitting pin length 31 mm



SIRMAN MF2214+MF2217

9719005 **SCROLL COMPLETE ALUMINIUM 8 FAMA-SIRMAN**
scroll \varnothing 45x117 mm - fitting \varnothing 23x11 mm
coupling height 9 mm
for SHROUDED MEAT MINCER 8 CE-EXPORT
for MEAT MINCER-SHROUDED GRATER 8 CE-EXPORT
for MEAT MINCER-GRATER 8 CE-EXPORT



SIRMAN MF2041

SIRMAN MF2041+MF2043

SIRMAN MF2043

9014702 **SCROLL COMPLETE CAST IRON 12 FAMA-SIRMAN**
scroll \varnothing 54x120 mm - fitting \varnothing 30x10 mm
fitting pin length 29 mm



SIRMAN MF0125
SIRMAN MF2123

SIRMAN MF0125+MF0127
SIRMAN MF2123+MF2127

SIRMAN MF0127
SIRMAN MF2127

9014705 **SCROLL COMPLETE CAST IRON 22 FAMA-SIRMAN**
scroll \varnothing 64x130 mm - fitting \varnothing 33 mm
fitting pin length 31 mm



SIRMAN MF2215

SIRMAN MF2215+MF2217

SIRMAN MF2217

9014120 **SCROLL COMPLETE ST. STEEL 12 FAMA-SIRMAN**
scroll \varnothing 54x120 mm - clamp \varnothing 30 mm
fitting pin length 29 mm



SIRMAN MF2124+MF2127

9014123 **SCROLL COMPLETE ST. STEEL 22 FAMA-SIRMAN**
scroll \varnothing 64x130 mm - clamp \varnothing 30 mm
fitting pin length 31 mm



SIRMAN MF2216+MF2217

9014058 **SCROLL COMPLETE ST. STEEL 8 FAMA-SIRMAN**
scroll \varnothing 45x112 mm - fitting \varnothing 25x11 mm
fitting height 10.4 mm



SIRMAN MF2042+MF2043



Sharpeners

5051635 SAND PIN 96 mm

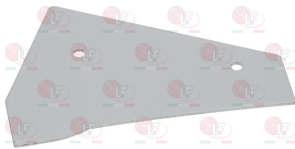


SIRMAN 19540709

Slice protectors

5063622 SLICE GUARD FOR SLICER OF ALUMINIUM

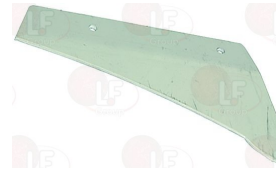
external dimensions 143x101 mm
distance between holes 82 mm



SIRMAN AVG036

9711006 SLICE GUARD FOR SLICER OF ALUMINIUM

external dimensions 170x95 mm
distance between holes 85 mm
for Slicer (SIRMAN) MIRRA300 - MIRRA300CE
MIRRA300UL



SIRMAN SM501203

9711007 SLICE GUARD FOR SLICER OF PLASTIC

external dimensions 115x90 mm
distance between holes 70 mm
for Slicer (SIRMAN) MIRRA220C - MIRRA220CCEDOM
MIRRA220CUL



SIRMAN 19562206

9009516 SLICE GUARD FOR SLICER OF PLEXIGLASS

external dimensions 80x35 mm
distance between holes 47 mm
for Slicer (SIRMAN) MIRRA220 - MIRRA220CEDOM
MIRRA220UL - PERLA195 - PERLA195CEDOM
PERLA220 - PERLA220CEDOM - TOPAZ195
TOPAZ195CEDOM - TOPAZ220 - TOPAZ220CEDOM



SIRMAN 19562201

9009517 SLICE GUARD FOR SLICER OF PLEXIGLASS

external dimensions 105x45 mm
distance between holes 59 mm
for Slicer (SIRMAN) AGATA250 - MIRRA250
MIRRA250CEDOM - MIRRA250UL - PERLA250
PERLA250CEDOM - TOPAZ250 - TOPAZ250CCEDOM
TOPAZ250CEDOM



SIRMAN 19562202

9711001 SLICE GUARD FOR SLICER OF PLEXIGLASS

external dimensions 130x80 mm
distance between holes 82 mm
for Slicer (SIRMAN) AGATA275 - AGATA275CE



SIRMAN AVC036



Suitable for:

SIRMAN

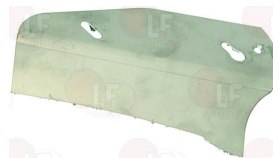


5030813 SLICE GUARD FOR SLICER OF ST. STEEL
 external dimensions 173x93 mm
 distance between holes 85 mm
 for Slicer (SIRMAN) GEMMA300 - GEMMA300CE
 GEMMA300INGRCE
 since 1/01/00 300CE



SIRMAN 19531030

9711002 SLICE GUARD FOR SLICER OF ST. STEEL
 external dimensions 185x110 mm
 distance between holes 102 mm
 for Slicer (SIRMAN) LEONARDO300BSCE
 LEONARDO300VCOCE - LEONARDO300VCSCE



SIRMAN 19531052

9711003 SLICE GUARD FOR SLICER OF ST. STEEL
 external dimensions 205x110 mm
 distance between holes 102 mm
 for Slicer (SIRMAN) LEONARDO330BSCE
 LEONARDO330VCOCE - LEONARDO330VCSCE



SIRMAN 19531053

9711004 SLICE GUARD FOR SLICER OF ST. STEEL
 external dimensions 215x130 mm
 distance between holes 122 mm
 for Slicer (SIRMAN) LEONARDO350BSTOPCE
 LEONARDO350BS2TOPCE - LEONARDO350VCSTOPCE



SIRMAN 19531054A

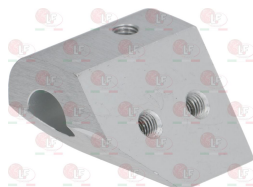
9711022 SLICE GUARD FOR SLICER OF ST. STEEL
 external dimensions 200x110 mm
 distance between holes 130 mm
 for AFFETTATRICE GEMMA 350 CE



SIRMAN 19521311

Sliding rods

5063122 BLOCK SLOPING PLATE SHAFT
 hole for shaft \varnothing 10 mm



SIRMAN 19525060

SIRMAN 19525060.10

5078353 BLOCK STRAIGHT PLATE SHAFT
 hole for shaft \varnothing 10 mm



SIRMAN 19525062



Switches

5068016 *****
mounting hole \varnothing 19 mm



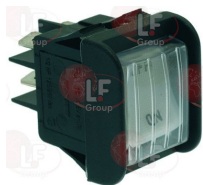
SIRMAN LF1041025

9014073 BIG PUSH-BUTTON PANEL 0-I WITH BOARD
with cable
external dimensions 150x55 mm
for Cutter (SIRMAN) C9VVCE
for Slicer (SIRMAN) AUTOMATICA300CE
AUTOMATICA330CE - AUTOMATICA350CE
AUTOMATICA370CE - GEMMA300CE - GEMMA330CE
GEMMA350CE - PERLA195CE - SELCE350CE
SELCE370CE - VASBS300CE - VASBS350CE
VASBS370CE - VCO300CE - VCO350CE - VCO370CE
VCS300CE
for Slicer (SIRMAN) G/ADA300V.V



SIRMAN 19702002

9319051 BIPOLAR WHITE SWITCH 16A 250V
16(4)A 250V
with indicator light and push-button cover
with ON-OFF print
max temperature 100°C
mounting hole 22x30 mm
for Slicer (SIRMAN) MIRRAV220 - MIRRAV250
MIRRAV275 - MIRRA220 - MIRRA220C
MIRRA220CCEDOM - MIRRA220CEDOM - MIRRA220CUL
MIRRA220UL - MIRRA250 - MIRRA250C
MIRRA250CCEDOM - MIRRA250CEDOM - MIRRA250CUL
MIRRA250UL - MIRRA275 - MIRRA275C
MIRRA275CCEDOM - MIRRA300 - PERLA195
PERLA195CEDOM - PERLA220 - PERLA220CEDOM
PERLA250 - PERLA250CEDOM - TOPAZCEDOM
TOPAZ195 - TOPAZ195CEDOM - TOPAZ220



SIRMAN 19410101

SIRMAN 19410102

9786002 GASKET FOR BIG PUSH-BUTTON PANEL
external dimensions 153x60 mm
for Cutter (SIRMAN) C9VVCE
for Slicer (SIRMAN) AUTOMATICA300CE
AUTOMATICA330CE - AUTOMATICA350CE
AUTOMATICA370CE - GEMMA300CE - GEMMA330CE
GEMMA350CE - PERLA195CEDOM - SELCE350CE
SELCE370CE - VASBS300CE - VASBS350CE
VASBS370CE - VCO300CE - VCS300CE - VCS350CE
VCS370CE



SIRMAN 19563032

5054178 BUTTON PANEL PLATE ON-OFF ADHESIVE
external dimensions 113x26 mm

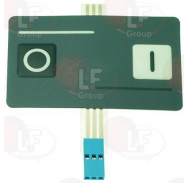


SIRMAN 19420163



Suitable for:

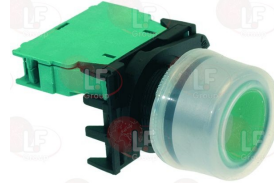
9014057 DIGITAL RECTANGULAR PUSH-BUTT.PANEL O-I
with cable
external dimensions 67x40 mm



SIRMAN MF2033

Suitable for:

9319053 GREEN START PUSH-BUTTON 16A 600V
GIOVENZANA - with push-button cap
1 normally open contact
mounting hole \varnothing 22 mm
for Potato peeler (SIRMAN) PPJ10CE - PP15EXPOCE
PP4EXPOCE - PP8EXPOCE



SIRMAN IV5940601

SIRMAN RG04356

5055063 MECHANISM START-UP PUSHBOTTON BLOCK



SIRMAN IB400407

5068975 MECHANISM START-UP PUSHBOTTON BLOCK



SIRMAN IB400402

9014065 MUSHROOM PUSH-BUTTON RED C/BLOCK
CEMA - 1 contact NC
mounting hole \varnothing 22 mm



SIRMAN RG04300

SIRMAN RG04328

9319048 OVAL PUSH-BUTTON PANEL ON-OFF/O-I
with cable
external dimensions 130x42x18 mm
for Slicer (SIRMAN) AGATA330CE - AGATA350CE
GEMMA300CE - GEMMA300INGRCE - GEMMA330CE
GEMMA350CE - LEONARDO350BSSTDCE
LEONARDO350VCSTDCE - LEONARDO370BSSTDCE
LEONARDO370VCSTDCE - LEONARDO385BSSTDCE
SELCE350CE - SELCE370CE - VCO300CE - VCS300CE
VCS350CE - VCS370CE



SIRMAN 19702036

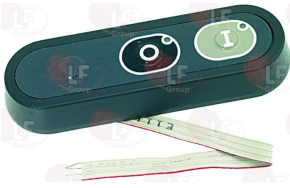
9319023 OVAL PUSH-BUTTON PANEL O-I WITH BOARD
with cable
external dimensions 130x40 mm



SIRMAN LF1010028



9319701 OVAL PUSH-BUTTON PANEL 0-I WITH BOARD
 without inversion - external size 130x41 mm
 for Cutter (SIRMAN) C15 - C4 - C4VV - C6 - C6VV
 C9
 for Potato peeler (SIRMAN) PP4ECOCE - PP8ECOCE
 for Slicer (SIRMAN) AGATA275CE - AGATA300CE
 AGATA300VCE - AGATA330CE - AGATA350CE
 AUTOMATICA300CE - AUTOMATICA330CE
 AUTOMATICA350CE - AUTOMATICA370CE - GEMMA300CE
 GEMMA300INGRCE - GEMMA330CE - GEMMA350CE
 MAINZ250CE - MINI250CE - MIRRA220CCE
 MIRRA220CE - MIRRA250CCE - MIRRA250CE
 MIRRA275CCE - MIRRA275CE - MIRRA300CE
 OPALE300CE - QUARZO250CE - QUARZO275CE
 QUARZO300CE - SELCE350CE - SELCE370CE
 VASBS300CE - VASBS350CE - VASBS370CE



SIRMAN 19702004

9786001 GASKET FOR OVAL PUSH-BUTTON PANEL
 external dimensions 132x45 mm
 for Cutter (SIRMAN) C15 - C4 - C4VV - C6 - C6VV
 C9
 for Potato peeler (SIRMAN) PP4ECOCE - PP8ECOCE
 for Slicer (SIRMAN) AGATA275CE - AGATA300CE
 AGATA300VCE - AGATA330CE - AGATA350CE
 AUTOMATICA300CE - AUTOMATICA330CE
 AUTOMATICA350CE - AUTOMATICA370CE - GEMMA300CE
 GEMMA300INGRCE - GEMMA330CE - GEMMA350CE
 MAINZ250CE - MINI250CE - MIRRA220CCE
 MIRRA220CE - MIRRA250CCE - MIRRA250CE
 MIRRA275CCE - MIRRA275CE - MIRRA300CE
 OPALE300CE - QUARZO250CE - QUARZO275CE
 QUARZO300CE - SELCE350CE - SELCE370CE
 VASBS300CE - VASBS350CE - VASBS370CE



SIRMAN 19563034

5054177 PUSH BUTTON PANEL BOX 3 HOLES
 external dimensions 130x40x36 mm



SIRMAN 19563124

9014068 PUSH-BUTT.PANEL 0-I WHITE-BLACK 16A 250V
 GIOVENZANA - 1 normally closed contact
 1 normally open contact
 with indicator lamp
 mounting hole \varnothing 22 mm



SIRMAN MF2138

9319024 PUSH-BUTT.PANEL 0-I WHITE-BLACK 16A 250V
 with push-button cap
 2 normally open contacts
 mounting hole 75x28 mm
 for Kneader (SIRMAN) PLUTONE7
 for Slicer (SIRMAN) MIRRA220CCE - MIRRA220CE
 MIRRA250CCE - MIRRA275CCE - MIRRA275CE
 MIRRA300CE



SIRMAN CINPKJD17

SIRMAN CINP7-50506072

SIRMAN 19410152

9319718 PUSH-BUTT.PANEL 2 BUT.ON-OFF GREEN-BLACK
 16(4)A 250V
 1 normally closed contact
 1 normally open contact
 mounting hole 22x30 mm



SIRMAN IB5800108



Suitable for:

SIRMAN



9319074 PUSH-BUTTON PANEL I-O-I W/CARD OVAL TYPE
 with cable
 external dimensions 130x40 mm
 for Meat mincer (SIRMAN) TCG12 - TCG32 - TC22PF
 TC32 - TC42

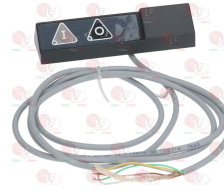


SIRMAN LF1033011

SIRMAN LF1033021

Suitable for:

5027743 PUSH-BUTTON PANEL O-I W/PLATE BIG
 for cable external dimensions 150x50 mm



SIRMAN LF1007001

9319711 PUSH-BUTTON PANEL 2 BUTTONS GREEN-RED
 16(4)A 250V
 1 normally closed contact
 1 normally open contact
 mounting hole 22x30 mm
 for Slicer (SIRMAN)



SIRMAN

7116491 PUSH-BUTTON WHITE 1-POLE
 with ring and OR gasket
 1 NO contact
 cable length 500 mm
 mounting hole \varnothing 16 mm
 for Slicer (SIRMAN) INGR350



SIRMAN 19410142

5049322 PUSH-BUTTON 1-POLE BLACK 6A 250V



SIRMAN IB5804402

5072730 PUSHBUTTON BLACK 1-POLE
 with scroll and OR gasket
 1 NO contact
 cable length 500 mm
 dima di foratura \varnothing 16 mm



SIRMAN 19410140

5049323 PUSHBUTTON GUARD BLOCK-CONTINUOUS
 external \varnothing 24 mm



SIRMAN IB4104000

5049321 PUSHBUTTON GUARD WITH BACKING
 dimensions 45x21 mm

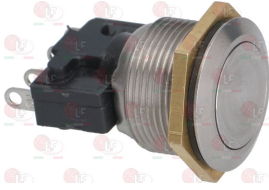


SIRMAN IB4104002C



Suitable for:

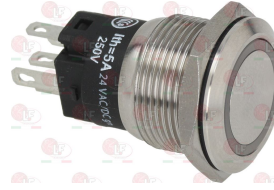
5055920 PUSHBUTTON 2-POLES SILVER
with OR and nut
1 NO contact
1 NC contact
mounting hole \varnothing 19 mm



SIRMAN LF1041001

Suitable for:

5068012 PUSHBUTTON 2-POLES SILVER 3A 240V
with indicator light 24V
mounting hole \varnothing 19 mm



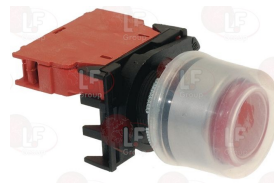
SIRMAN LF1041023

9014062 RED SINGLE-POLE PUSH-BUTTON 0.7A 250V
1 normally closed contact
head \varnothing 19 mm - mounting hole \varnothing 15 mm



SIRMAN LF1010007

9319052 RED STOP PUSH-BUTTON 16A 600V
GIOVENZANA - with push-button cap
1 normally closed contact
mounting hole \varnothing 22 mm
for Potato peeler (SIRMAN) PPJ10CE - PP15EXPOCE
PP4EXPOCE - PP8EXPOCE



SIRMAN IV5940602

SIRMAN RG04354

5081111 REVERSE PUSHBUTTON WHITE 16A 250V
with silk-screen printing ON - R - ARROWS
temperature max 120°C
mounting hole 22x30 mm



SIRMAN 29410101

9319049 SLANTED OVAL PUSH-BUTTON PANEL ON-OFF
with cable
external dimensions 130x42x35 mm
for Slicer (SIRMAN) AUTOMATICA300CE
AUTOMATICA330CE - AUTOMATICA350CE
AUTOMATICA370CE - GALILEO350CE
GALILEO350STDCE - GALILEO370CE
GALILEO370STDCE - GALILEO385CE
GALILEO385STDCE - GEMMA300INGRCE - GEMMA330CE
GEMMA350CE - LEONARDO350BSSTDCE
LEONARDO350VCSTDCE - LEONARDO370BSSTDCE
LEONARDO370VCSTDCE - LEONARDO385BSSTDCE
PALLADIO300STDCE - PALLADIO330STDCE
PALLADIO350STDCE - SELCE350CE - SELCE370CE
VASBS300CE - VASBS350CE - VASBS370CE
VCO300CE - VCS300CE - VCS350CE - VCS370CE



SIRMAN 19702034



Suitable for:

SIRMAN



Suitable for:

9319050 SLANTED OVAL PUSH-BUTTON PANEL ON-OFF
 with cable
 external dimensions 130x42x35 mm
 for Slicer (SIRMAN) CANOVA250CE - CANOVA275CE
 CANOVA300CE - GALILEO350CE - GALILEO350INGRCE
 GALILEO370CE - GALILEO370INGRCE - GALILEO385CE
 GALILEO385INGRCE - LEONARDO300BSCE
 LEONARDO300VCOCE - LEONARDO300VCSCCE
 LEONARDO330BSCE - LEONARDO330VCOCE
 LEONARDO330VCSCCE - LEONARDO350BSCE
 LEONARDO350BS2CE - LEONARDO370BSCE
 LEONARDO370BS2CE - LEONARDO385BSCE
 PALLADIO300CE - PALLADIO300INGRCE
 PALLADIO330CE - PALLADIO330INGRCE
 PALLADIO350CE - PALLADIO350STDCE



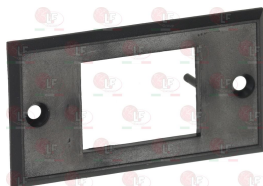
SIRMAN 19702030

9014072 SMALL PUSH-BUTTON PANEL 0-I WITH BOARD
 with cable
 external dimensions 120x47 mm
 for Cutter (SIRMAN) C4CE
 for Slicer (SIRMAN) AGATA250CE - AGATA275CE
 AGATA300CE - AGATA300VCE - AGATA330CE
 AGATA350CE - MAINZ250CE - MINI250CE
 MINI250VCE - MIRRAVBS250CE - MIRRAVBS275CCE
 MIRRAVBS275CE - MIRRAVBS300 - MIRRAV220CE
 MIRRAV250E - MIRRAV275E - MIRRA220CCE
 MIRRA220CE - MIRRA250CCE - MIRRA250CE
 MIRRA275CE - MIRRA300CE - OPALE300CE
 PERLA195CEDOM - QUARZO250CE - QUARZO275CE
 QUARZO300CE - VAS250CE - VAS275CE - VCO250CE
 VCO275CE



SIRMAN 19702000

5077659 SWITCH HOLDER 65x36 mm
 internal hole 30x22 mm
 distance between holes 52 mm



SIRMAN 19563171

3786487 GASKET FOR SMALL PUSH-BUTTON PANEL
 external dimensions 122x52 mm
 for Cutter (SIRMAN) C4CE
 for Slicer (SIRMAN) AGATA250CE - AGATA275CE
 AGATA300CE - AGATA300VCE - AGATA330CE
 AGATA350CE - MAINZ250CE - MINI250CE
 MINI250VCE - MIRRAVBS250CE - MIRRAVBS275CCE
 MIRRAVBS275CE - MIRRAVBS300 - MIRRAV220CE
 MIRRAV250E - MIRRAV275E - MIRRA220CCE
 MIRRA220CE - MIRRA250CCE - MIRRA250CE
 MIRRA275CE - MIRRA300CE - OPALE300CE
 PERLA195CEDOM - QUARZO250CE - QUARZO275CE
 QUARZO300CE - VAS250CE - VAS275CE - VCO250CE
 VCO275CE
 for Vegetables/mozzarella cutter (SIRMAN)
 TMCOPALLCE - TMCOPINOXCE



SIRMAN 19563030

5056102 SWITCH 1-POLE GREEN 6A 250V
 with indicator lamp and cables
 silk-screen printing ON - OFF
 mounting hole 12x30 mm

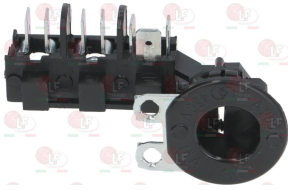


SIRMAN KODK005



Terminal blocks

- 5054821** **TERMINAL BLOCK 3P WITH FAIRLEAD**
 mod. PA205 - for cable max 1.5 mm²
 nominal tension 450V - nominal current 16A



SIRMAN MSC04N202

Tie rods for blade cover

- 9013033** **BLADE COVER TIE ROD PIN 198 mm THREAD M8**
 microswitch holder ø 10x84 mm
 for Slicer (SIRMAN) AGATA330CE - AGATA350
 AGATA350CE



SIRMAN AVG032

- 9714005** **BLADE COVER TIE ROD SHAFT 150mm PITCH M6**
 micro support ø 10x52 mm
 for Slicer (SIRMAN) PERLA250 - PERLA250CEDOM
 TOPAZ250 - TOPAZ250CEDOM - TOPAZ275
 TOPAZ275CEDOM



SIRMAN AMG032

- 9714001** **BLADE COVER TIE ROD SHAFT 160mm PITCH M6**
 double microswitch holder ø 10x18 mm
 for Slicer (SIRMAN) MIRRA220 - MIRRA220CE
 MIRRA220CEDOM - MIRRA220UL - MIRRA250
 MIRRA250CE - MIRRA250CEDOM - MIRRA250UL



SIRMAN 19530501

- 9013032** **BLADE COVER TIE ROD SHAFT 170mm PITCH M6**
 micro support ø 8x80 mm
 for Slicer (SIRMAN) AGATA250 - AGATA250CE
 AGATA275 - AGATA275CE - AGATA300 - AGATA300CE
 AGATA300VCE



SIRMAN AVA032

- 9714007** **BLADE COVER TIE ROD SHAFT 185mm PITCH M6**
 double microswitch holder ø 10x18 mm
 for Slicer (SIRMAN) MIRRA220C - MIRRA220CCE
 MIRRA220CCEDOM - MIRRA220CUL - MIRRA250C
 MIRRA250CCE - MIRRA250CCEDOM - MIRRA250CUL
 MIRRA275C - MIRRA275CCE - MIRRA275CCEDOM



SIRMAN 19530532

- 9714006** **BLADE COVER TIE ROD SHAFT 200mm PITCH M6**
 micro support ø 10x78 mm
 for Slicer (SIRMAN) MIRRA275 - MIRRA275CE
 MIRRA300 - MIRRA300CE - MIRRA300UL



SIRMAN SM212740



SIRMAN



Suitable for:

9714004 **BLADE COVER TIE ROD SHAFT 200mm PITCH M8**
 double microswitch holder \varnothing 10x23 mm
 for Slicer (SIRMAN) QUARZO250 - QUARZO250CE
 QUARZO250UL - QUARZO275 - QUARZO275CE
 QUARZO300 - QUARZO300CE



SIRMAN SM592021

Suitable for:

9013034 **BLADE COVER TIE ROD SHAFT 235mm PITCH M8**
 double micro switch holder \varnothing 10x25 mm
 without knob
 for Slicer (SIRMAN) AUTOMATICA300 - AUTOMATICA330
 GEMMA300 - GEMMA300CE - GEMMA300UL - GEMMA330
 GEMMA330CE - GEMMA330UL - GEMMA350CE
 GEMMA350UL - LEONARDO300BSCE
 LEONARDO300VCOCE - LEONARDO300VCSCE
 LEONARDO330BSCE - LEONARDO330VCOCE
 LEONARDO330VCSCE - PALLADIO300CE
 PALLADIO300STDCE - PALLADIO350CE
 PALLADIO350STDCE



SIRMAN 19530507

9714003 **BLADE COVER TIE ROD SHAFT 240mm PITCH M8**
 double microswitch holder \varnothing 12x110 mm
 for Slicer (SIRMAN) AUTOMATICA350CE - SELCE350
 SELCE350CE - SELCE350UL - SELCE370
 SELCE370CE - SELCE370UL



SIRMAN 19530509

5058143 **KNOB FOR BLADE COVER TIE ROD \varnothing 60 mm**
 threaded hole M8



SIRMAN 19522610

5008655 **NUT FOR BLADE GUARD M10 PIERCED M6**



SIRMAN SM133418

9714002 **TIE ROD FOR BLADE COVER PIN 230mm PITCH**
 microswitch holder \varnothing 12x60 mm
 for Slicer (SIRMAN) LEONARDO350BSCE
 LEONARDO350BSSTDCE - LEONARDO350BS2CE
 LEONARDO350VCSTDCE - LEONARDO370BSCE
 LEONARDO370BSSTDCE - LEONARDO370BS2CE
 LEONARDO370VCSTDCE - LEONARDO385BSCE
 LEONARDO385BSSTDCE



SIRMAN 19530554



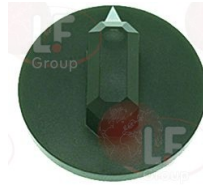
Timers

9446010 THREE-PHASE TIMER KIT 4 MINUTES M24
 complete with knob
 mechanical movement with balance wheel
 manually set mechanical timer
 4 minutes manually set cycle
 contact capacity 16(4)A 250V
 max temperature 125°C
 D-shaped pin \varnothing 6x4.6 mm
 for Potato peeler (SIRMAN) PP4ECOCE - PP8ECOCE



SIRMAN RGE04030

3241174 BLACK KNOB \varnothing 44 mm
 D shaft hole 6x4.6 mm



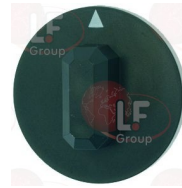
SIRMAN RG04352

9446013 TIMER KIT 4 MINUTES G4
 complete with knob
 mechanical movement with balance wheel
 manually set mechanical timer
 4 minutes manually set cycle
 contact capacity 16A 250V
 max temperature 125°C
 square pin 3.6x3.6 mm
 for Potato peeler (SIRMAN) PPJ10CE - PPJ20CE



SIRMAN IV5966010

3241380 BLACK KNOB \varnothing 44 mm
 squared hole 3.5x3.5 mm



SIRMAN IV5966011

3446151 TIMER 5 MINUTES C20
 manually set mechanical timer
 manually set cycle 5 minutes
 2 poles with contact capacity 16(3)A 250V
 max temperature 125°C
 D-shaped pin \varnothing 6x4.6 mm
 for Potato peeler (SIRMAN) PP15EXPOCE - PP4EXPOCE
 PP8EXPOCE



SIRMAN RG04342



Suitable for:

SIRMAN



Suitable for:

Transformers

5062347 TRANSFORMER 230V/7V 30VA
primary voltage 230V 50/60Hz
secondary voltage 7V 30VA
coupling with cables



SIRMAN MSD00042

Watertight seals and rings

5023749 *****



SIRMAN MF2264

5101143 PTFE GASKET \varnothing 20x15x6 mm
for boss rod
for CUTTER C4/C6/C4VV/C6VV/C4VT/C6VT CE



SIRMAN MSC04N094

5063207 SEALING RING 16x8x7 mm
for Mixer (SIRMAN) CICLONE 150W + A25



SIRMAN IB4104015

9186057 SEALING RING 20x35x7 mm



SIRMAN MF2021

9014136 SEALING RING 25x40x7 mm



SIRMAN MF0106

SIRMAN MF2101

5032337 SEALING RING 30x15x7 mm



SIRMAN LF1260001

5078953 SEALING RING 47x19x10 mm



SIRMAN LF1234002

5054145 SEALING RING 47x25x7 mm
for Meat mincer (SIRMAN) TC22 - TC32



SIRMAN LF1233002

Suitable for:

Suitable for:

5035025 SEALING RING 50x40x7 mm



SIRMAN LF1232611

Wheels and accessories

9016044 ALUMINIUM WHEEL MOD.22 FAMA-SIRMAN



SIRMAN MF2220

9522201 HANDWHEEL MOD.12 ALUMINIUM FAMA-SIRMAN



SIRMAN MF2132

9016054 HANDWHEEL MOD.12 T.STEEL FAMA-SIRMAN



SIRMAN MF2133

5036193 HANDWHEEL MOD.22 ST.STEEL FAMA-SIRMAN



SIRMAN MF2221

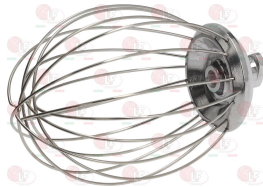
9016055 HANDWHEEL MOD.8 ALUMINIUM FAMA-SIRMAN



SIRMAN MF2046

Whisks, hooks and flat beaters

5063224 WHISK OF METAL WITH THREADS \varnothing 2 mm
overall height coupling included 195 mm



SIRMAN CINP7-11-03

SIRMAN CINP7-40102800

The data herewith contained may change without notice and LF SpA cannot be held responsible for possible errors stated or resulting by the use of this document. All rights reserved. No part of this publication may be reproduced without written permission by LF SpA.



Distributing Components, Spare Parts & Accessories in original quality worldwide

-
- LF SpA HEADQUARTERS**
via Voltri, 80 - 47522 Cesena (FC) ITALY
Tel. +39 0547 34 11 11 - Fax +39 0547 34 11 10
www.lfricambi724.it - info@lfricambi.it
Export Dept. Tel. +39 0547 34 11 50 - Fax +39 0547 34 11 55
www.lfspareparts724.com - export@lfspareparts.com
- LF SpA HOUSEHOLD COMPONENTS DIVISION**
Via Padriciano, 99 - AREA Science Park - 34149 Trieste (TS) ITALY
Tel. +39 0547 34 12 42 - Fax +39 0547 34 12 48
www.lfspareparts724.com - info@lfspareparts.com
- EPGC Sas FRANCE**
13, Rue des Forts - 59960 Neuville en Ferrain
Tel. +33 (0)3 20 25 06 21 - Fax +33 (0)3 20 25 34 12
www.epgc.com - epgc@epgc.com
- LF GmbH GERMANY**
Junkersstrasse, 3 - D-82178 Puchheim - München
Tel. +49 89 89 45 78 66 - Fax +49 89 89 45 78 88
www.lfersatzteile724.de - info@lfersatzteile.de
- LF China REPUBLIC OF CHINA**
Room 403, No.2, Huadu Mansion, Lane 422, Huanghua Rd.
Minhang Dist. - 201103 Shanghai
Tel. +86 (0)21 33 53 66 31 - Fax +86 (0)21 33 53 66 32
www.lfspareparts724.com - china@lfspareparts.com
- OOO LF RUSSIAN FEDERATION**
Ul. Anatoliya Zhivova, 8 - office 1 - 123100 Moscow
Tel./Fax +7 495 725 26 53
www.lfspareparts724.ru - info@lfspareparts.ru
- LF Repuestos Horeca S.L.U. SPAIN**
Poligono Industrial Carpetania - C/Miguel Faraday, 8 - 28906 Getafe
Tel. +34 91 477 91 00 - Fax +34 91 477 90 81
www.lfrepuestos-horeca724.es - info@lfrepuestos.es
- LF Scandinavia Aps - LF Spareparts S.p.A. DENMARK**
Nupark, 51 - 7500 Holstebro
Tel. +45 70 70 77 33
www.lfspareparts724.dk - denmark@lfspareparts.dk
- LF SpA Cesena (IT) Swiss Branch Steinhausen SWITZERLAND**
Sennweidstrasse, 45 - CH-6312 Steinhausen
Tel. +41 (0)41 760 15 80/1 - Fax +41 (0)41 760 15 85
www.lfersatzteile724.ch - info@lfersatzteile.ch
- LF Spare Parts Ltd. UNITED KINGDOM**
A10a Lakeside Business Park, Broadway Lane
South Cerney, Gloucestershire GL7 5XL
Tel. +44 (0)1285 86 16 25 - Fax +44 (0)1285 86 39 49
www.lfspareparts724.co.uk - info@lfspareparts.co.uk
- LF Central Est Europe S.r.o. CZECH REPUBLIC**
Antala Staska 1859/34
14000 Praha 4 - KRC
Tel. +420 730 156 910
www.lfspareparts724.cz - info@lfspareparts.cz
- LF SPARE PARTS INC. USA**
Legal address:
155 Office Plaza Dr - Suite A - Tallahassee, FL 32301
Business/Mailing address:
1100 South Tower, 225 Peachtree St., N.E. - Atlanta, GA 30303, USA
Tel. +1-404-525-2600 - Fax +1-404-586-3528
www.lfspareparts724.us - info@lfspareparts.us
Tel. West Coast and Midwest: 206-349-1525 Sauro
Tel. East Coast and the Caribbean: 786-817-1764 Luis
-
- AUSTRALIA AND NEW ZEALAND**
www.lfspareparts724.com
andrea.calvio@lfspareparts.com
- AUSTRIA**
www.lfersatzteile724.at
info@lfersatzteile.at
- BALKAN COUNTRIES**
www.lfspareparts724.com
matija.ramov@lfspareparts.com
- BALTIC COUNTRIES**
www.lfspareparts724.com
inara.silina@lfspareparts.com
- LATIN AMERICA AND THE CARRIBEANS**
www.lfrepuestos-horeca724.es
export@lfrepuestos.es
- POLAND**
www.lfspareparts724.pl
info@lfspareparts.pl
- SOUTH KOREA**
www.lfspareparts724.com
fabio.doni@lfspareparts.com
- TURKEY**
www.lfyedekparca724.com
export@lfspareparts.com